



E-SWITCH®

SERIES JS1300 SWITCHES

NAVIGATION SWITCHES



FEATURES & BENEFITS

- ▶ 5-position navigation
- ▶ Very low profile SMT design
- ▶ Unique design

APPLICATIONS/MARKETS

- ▶ Consumer electronics where user interface is needed
- ▶ Handheld instrumentation
- ▶ Navigation
- ▶ Telecommunication

SPECIFICATIONS

Contact Rating:	20mA @ 12 VDC
Life Expectancy:	200,000 actuations
Contact Resistance:	100mΩ MAX (INITIAL)
Insulation Resistance:	100MΩ
Dielectric Strength:	100 VAC
Operating Temperature:	-20°C to 70°C
Travel:	.25 ±.15 mm

MATERIALS

Cover:	Nickel
Base:	Nylon
Actuator:	Nylon
Terminals:	Copper alloy, silver plated
Moving Contact:	Stainless steel, silver plated
Tape:	Teflon

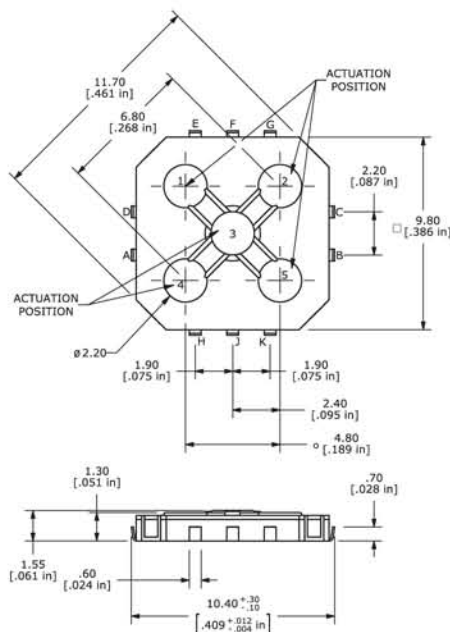
HOW TO ORDER

SERIES	MODEL NO.	ACTUATOR	CONTACT MATERIAL
JS	1300	A = 1.55mm	Q = Silver

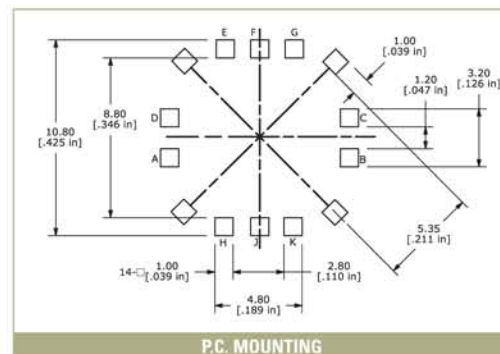
Example Ordering Number
JS1300AQ

Specifications subject to change without notice.

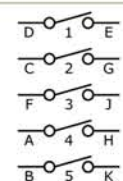
JS 1300



Actuation Position	Circuit
1	D - E
2	C - G
3 (Center)	F - J
4	A - H
5	B - K



P.C. MOUNTING



SCHEMATIC

TACT
SWITCHESNAVIGATION
SWITCHESPUSHBUTTON
SWITCHESTOGGLE
SWITCHESROCKER
SWITCHESSLIDE
SWITCHESSNAP-ACTION
SWITCHESDIP
SWITCHESKEYLOCK
SWITCHESROTARY
SWITCHESDETECTOR
SWITCHESCAP
OPTIONS

Mouser Electronics

Authorized Distributor

Click to View Pricing, Inventory, Delivery & Lifecycle Information:

[E-Switch:](#)

[JS1300AQ](#)