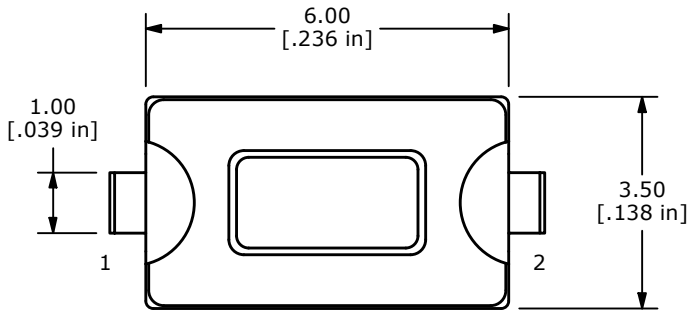
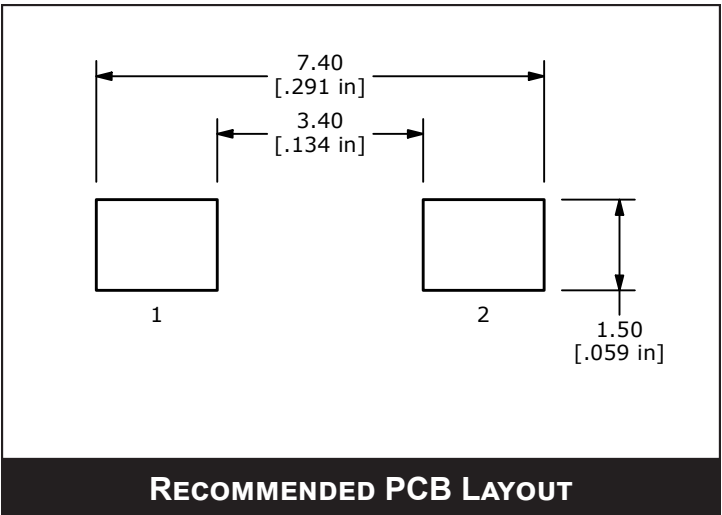
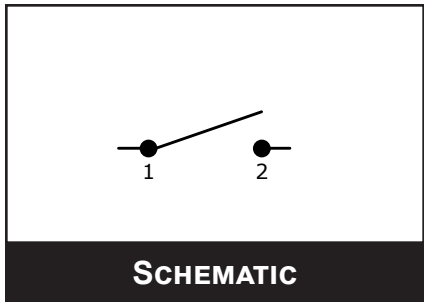
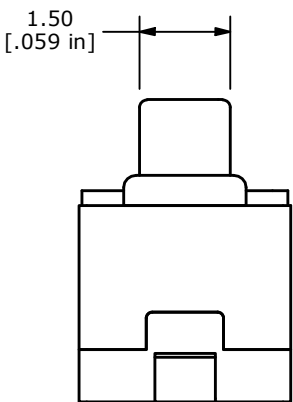
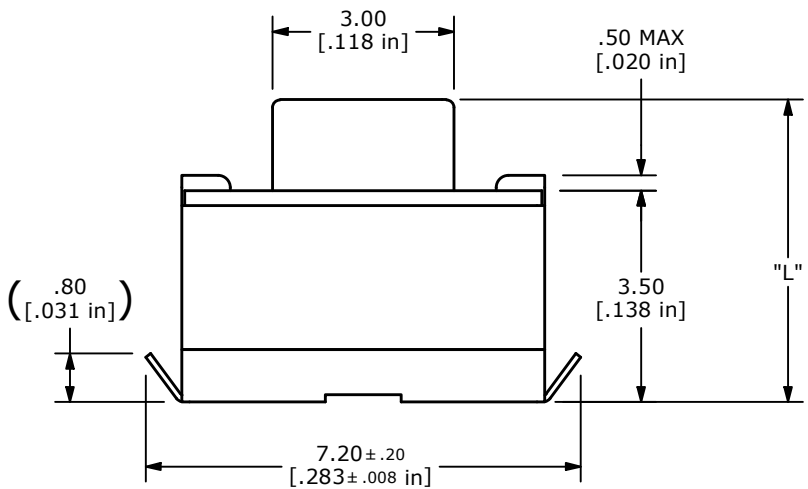


TL6400 SERIES TACT SWITCH

BODY DIMENSIONS



ACTUATOR	"L"
A	4.30
B	5.00



TOGGLE	ROTARY	ROCKER	PUSHBUTTON	NAVIGATION	KEYLOCK	DIP
SWITCHES	SWITCHES	SWITCHES	SWITCHES	SWITCHES	SWITCHES	SWITCHES
TACTILE	SLIDE	ROTARY	ROTARY	ROTARY	ROTARY	ROTARY
SWITCHES	SWITCHES	SWITCHES	SWITCHES	SWITCHES	SWITCHES	SWITCHES
CAP	SNAP ACTION	SNAP ACTION	SNAP ACTION	SNAP ACTION	SNAP ACTION	SNAP ACTION
OPTIONS	TOGGLE	TOGGLE	TOGGLE	TOGGLE	TOGGLE	TOGGLE
ANTI-VANDAL	ANTI-VANDAL	ANTI-VANDAL	ANTI-VANDAL	ANTI-VANDAL	ANTI-VANDAL	ANTI-VANDAL
SWITCHES	SWITCHES	SWITCHES	SWITCHES	SWITCHES	SWITCHES	SWITCHES
DETECTOR	DETECTOR	DETECTOR	DETECTOR	DETECTOR	DETECTOR	DETECTOR
SWITCHES	SWITCHES	SWITCHES	SWITCHES	SWITCHES	SWITCHES	SWITCHES

Technical drawing of the actuator assembly, showing dimensions in inches and millimeters.

Top View Dimensions:

- Overall width: 16.00 [0.630 in]
- Distance between actuator centers: 8.00 [0.315 in]
- Distance from left edge to first actuator center: 2.00 [0.079 in]
- Distance between actuator centers (repeated): 4.00 [0.157 in]
- Distance from right edge to last actuator center: 4.60 [0.181 in]
- Actuator diameter: $\varnothing 1.50$ [$\varnothing 0.059$ in]
- Distance from top edge to actuator center line: 7.50 [0.295 in]
- Distance from top edge to mounting holes: 1.75 [0.069 in]
- Distance between mounting holes: 2.00 [0.079 in]
- Distance between mounting holes (repeated): 4.00 [0.157 in]

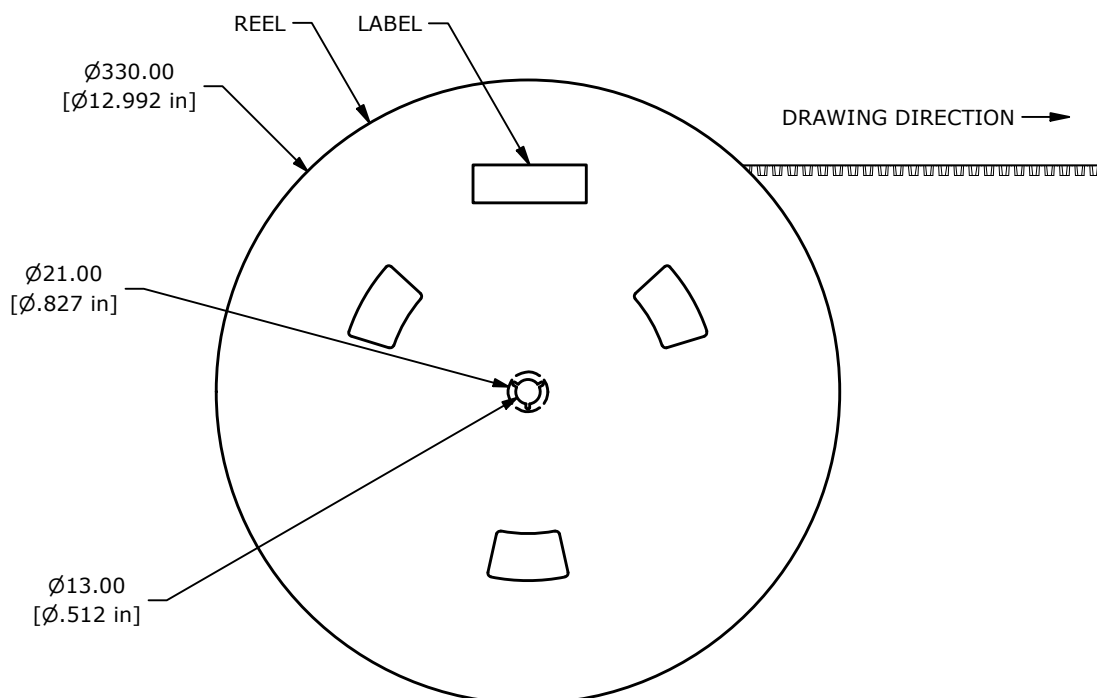
Side View Dimensions:

- Overall height: 13.3 [0.5 in] (COVER TAPE)
- Distance from top edge to actuator center line: 9.50 [0.374 in]
- Distance from bottom edge to actuator center line: 4.60 [0.181 in]
- Distance from bottom edge to mounting holes: 0.35 [0.014 in]

Cross-sectional View Dimensions:

- Overall height: 8.5 [0.3 in]
- Distance from bottom edge to actuator center line: 4.60 [0.181 in]
- Distance from top edge to actuator center line: 9.50 [0.374 in]
- Distance from bottom edge to mounting holes: 0.35 [0.014 in]

ACTUATOR	"L"
A	4.30



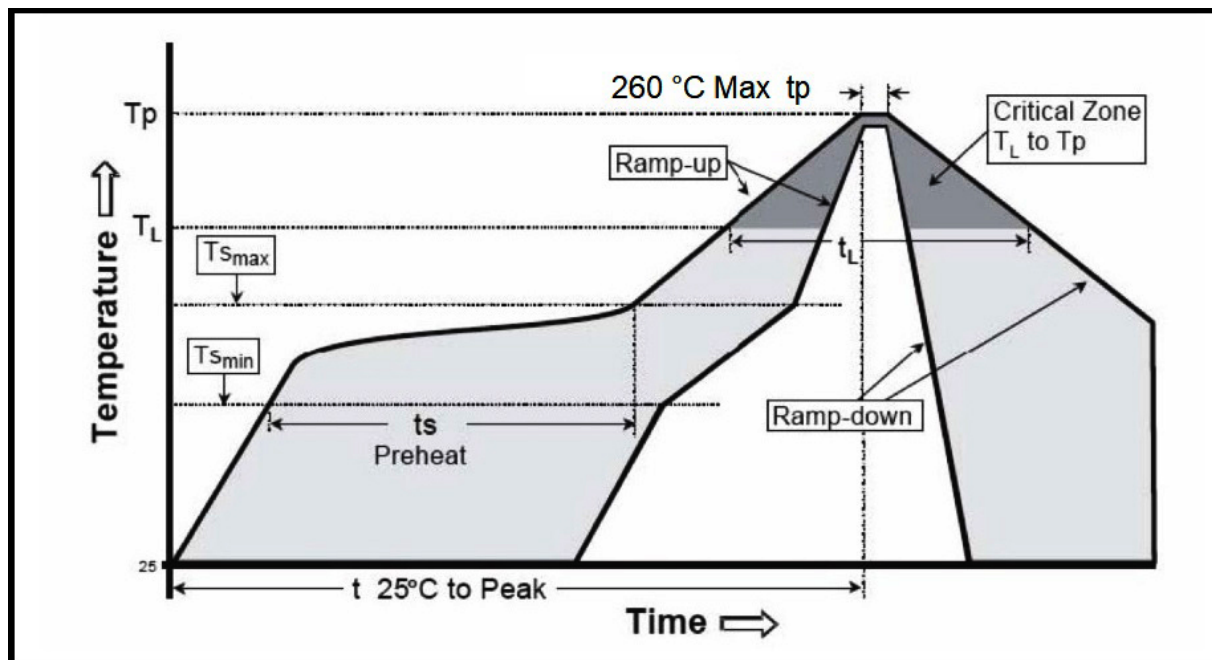
RECOMMENDED SOLDER PROCESS

Most contamination problems can be prevented by exercising care during the cleaning and soldering process. Care should be taken not to immerse or spray unsealed switches during flux removal. Contact E-Switch for specific soldering recommendations and specifications not shown. Generalized soldering procedures are outlined below.

“TYPICAL” SMT REFLOW (Pb and Pb-Free)

Profile Feature	Sn-Pb Eutectic Assembly	Pb-Free Assembly
Average Ramp-Up Rate ($T_{s_{max}}$ to T_p)	3 °C/second max.	3 °C/second max.
Preheat		
-Temperature Min ($T_{s_{min}}$)	100 °C	150 °C
-Temperature Max ($T_{s_{max}}$)	150 °C	200 °C
-Time ($t_{s_{min}}$ to $t_{s_{max}}$)	60-120 seconds	60-180 seconds
Time Maintained above:		
-Temperature (T_L)	183 °C	217 °C
-Time (t_L)	60-150 seconds	60-150 seconds
Time within 5 °C of actual Peak Temperature (t_p)	10-30 seconds	20-40 seconds
Ramp-Down Rate	6 °C/second max.	6 °C/second max.
Time 25 °C to Peak Temperature	6 minutes max.	8 minutes max.

Note 1: All temperatures refer to topside of the package, measured on the package surface.



Mouser Electronics

Authorized Distributor

Click to View Pricing, Inventory, Delivery & Lifecycle Information:

E-Switch:

[TL6400AF160QJ](#) [TL6400AF260QJ](#) [TL6400BF160QJ](#) [TL6400BF260QJ](#)