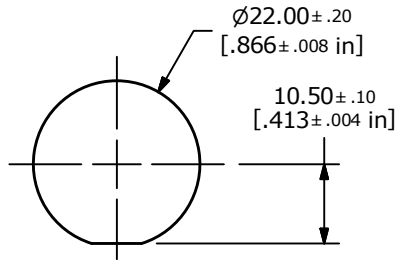


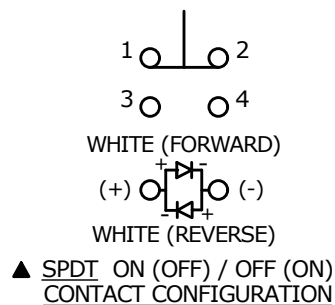
OPTIONAL PANEL CUTOUT  
MAX. PANEL THICKNESS 12mm



RECOMMENDED PANEL CUTOUT  
MAX. PANEL THICKNESS 12mm

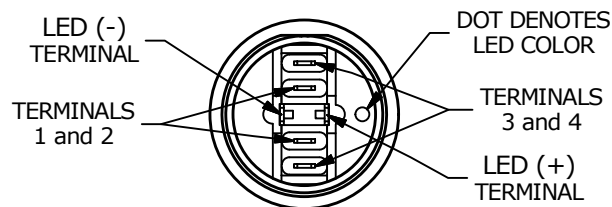
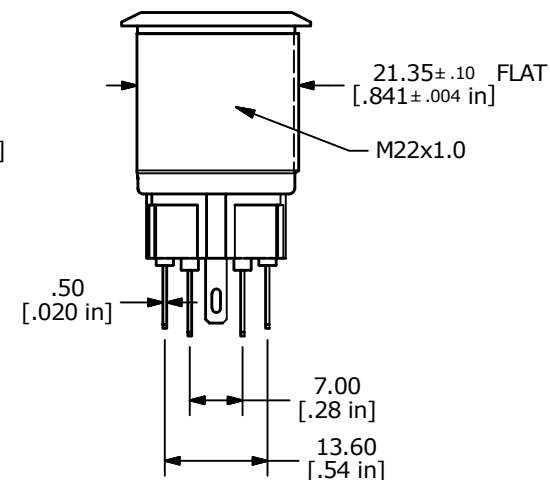
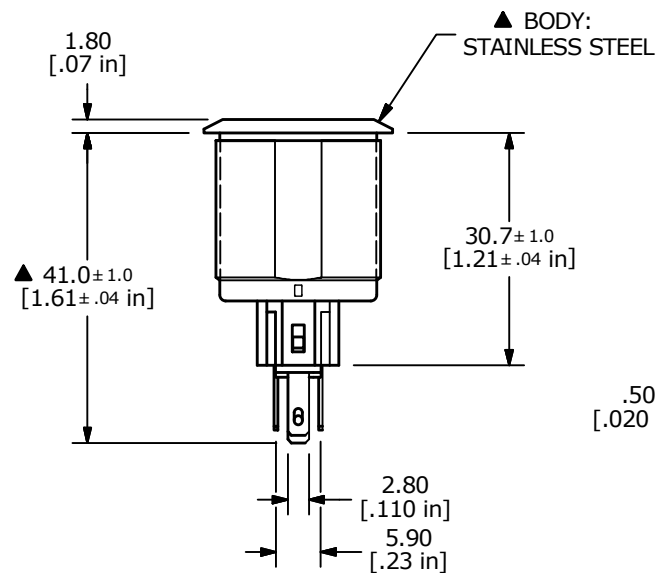
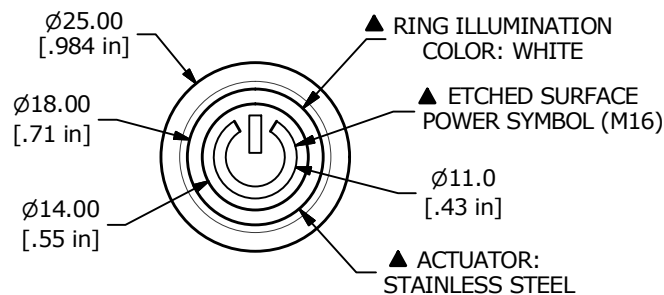
SWITCH FUNCTION	
POS. 1	POS. 2
1-2 ON 3-4 OFF	1-2 (OFF) 3-4 (ON)

( ) = MOMENTARY



## NOTE:

- ALL DIMENSIONS IN MM [INCH]
- GENERAL TOLERANCE: X.X = ± 0.4  
X.XX = ± 0.25
- TERMINAL NUMBERS FOR REF. ONLY
- RATING: 2A @ 48VDC
- CONTACT RESISTANCE: 50mΩ MAX. @ 1A 12VDC
- INSULATION RESISTANCE: 1,000MΩ @ 500VDC
- DIELECTRIC STRENGTH: 2,000VAC MIN. FOR 1 MINUTE
- ELECTRICAL LIFE: 50,000 CYCLES
- OPERATING TEMPERATURE: -20°C to 55°C
- INGRESS PROTECTION: IP65
- ▲ DENOTES CRITICAL PARAMETER
- ILLUMINATION COLOR: WHITE (FORWARD), WHITE (REVERSE)
- ILLUMINATION VOLTAGE: 12V 20mA
- HARDWARE INCLUDED: HEX NUT AND O-RING (NOT SHOWN)



A	23941	RELEASE FOR PRODUCTION	6/25/19	MW
REV	PCR NO	DESCRIPTION	DATE	BY

THE INFORMATION CONTAINED IN THIS DOCUMENT IS PROPRIETARY  
TO E-SWITCH AND IS NOT TO BE COPIED OR TRANSFERRED

TITLE PV7F2Y0SS-304-M16

SCALE 1:1	DATE 6/25/2019	DR MW	DWG 52-PV7F2Y0SS304M16	REV A
--------------	-------------------	----------	---------------------------	----------

# Mouser Electronics

Authorized Distributor

Click to View Pricing, Inventory, Delivery & Lifecycle Information:

[E-Switch:](#)

[PV7F2Y0SS-304-M16](#)