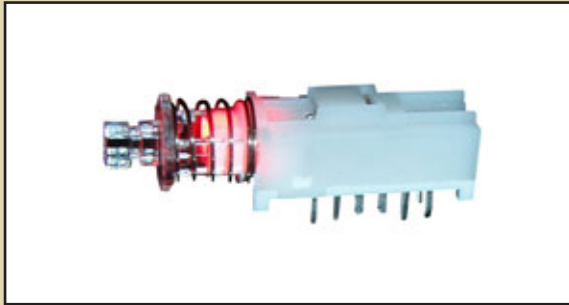


# SERIES WBL SWITCHES



## ILLUMINATED PUSHBUTTON SWITCH



### FEATURES & BENEFITS

2 or 4 pole options  
Cap Option  
Multiple LED colors

### APPLICATIONS / MARKETS

Telecommunications  
Consumer electronics  
Audio/Visual  
Medical equipment  
Computer/servers/peripherals

### MECHANICAL SPECIFICATIONS

Mechanical Life:	10,000 cycles
Force:	200 +/- 100 grams
Travel:	Full: 3.30 +/- 0.3mm; To Lock: 2.50 +/- 0.3mm

### ELECTRICAL SPECIFICATIONS

Contact Arrangement:	DPDT & 4PDT
Contact Rating:	30VDC, 300mA
Contact Resistance:	50mΩ (initial max)
Insulation Resistance:	100MΩ (Min @ 500VDC)
Dielectric Strength:	500VAC

### ENVIRONMENTAL SPECIFICATIONS

Operating Temperature:	-20°C to +70°C
Storage Temperature:	-20°C to +70°C

### HOW TO ORDER:

SERIES

WBL

POLES



2U = 2 pole  
4U = 4 pole

CONFIGURATION



OA = Momentary  
EE = Latching

LED COLOR



R = Red  
G = Green  
Y = Yellow  
X = None  
B = Blue  
RG = Red-Green  
RB = Red-Blue  
RY = Red-Yellow  
GB = Green-Blue  
GY = Green-Yellow  
YB = Yellow-Blue

PLATING



Q = Silver

BUTTON  
(optional)



R05 = 10mm Dia.

BUTTON COLOR  
(optional)

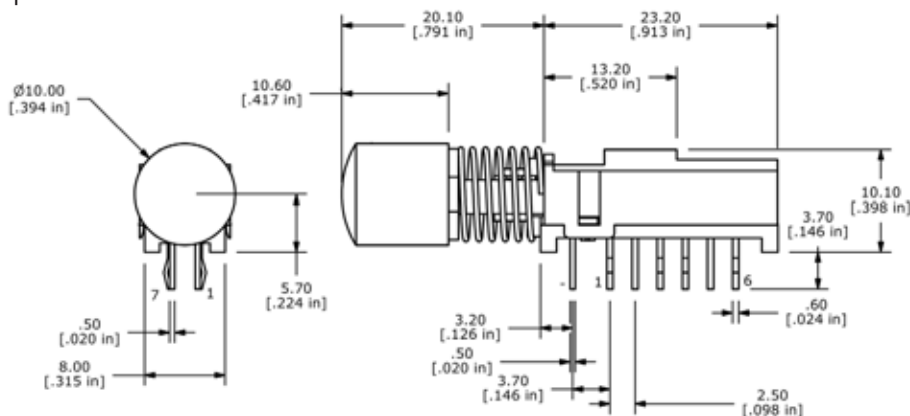


CLR = Transparent

Parts to be packaged in trays, 84 pieces per tray.

Specifications subject to change without notice.

Optional Button:



### LED SPECIFICATIONS

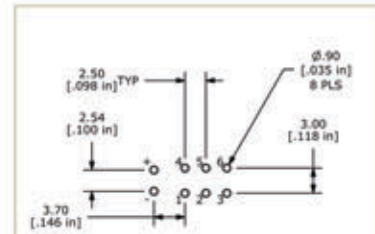
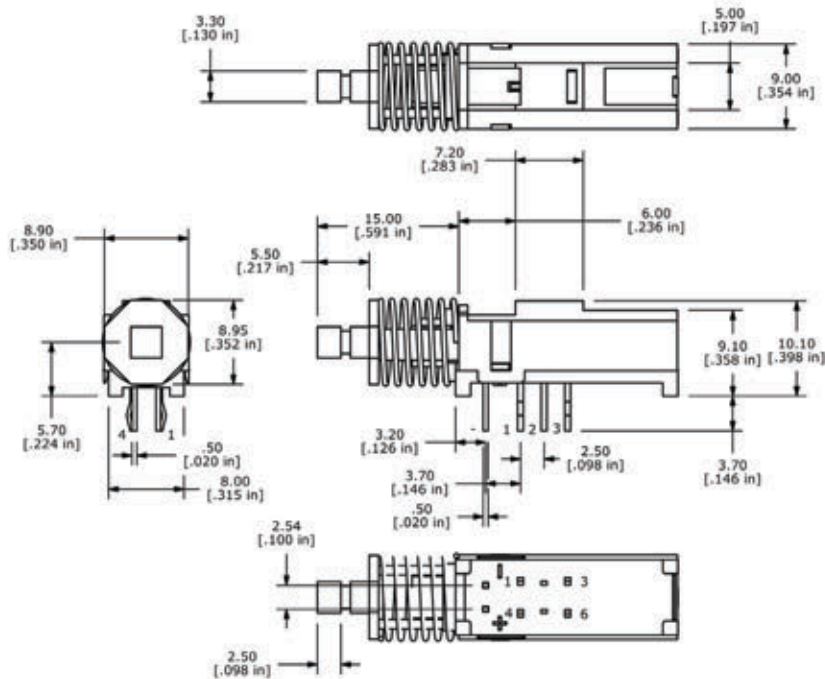
	Units	Blue	Red	Green	Yellow
Forward Current	mA	20mA	20mA	20mA	20mA
Forward Voltage @ 20mA	VDC	3.5 typ - 4.0 max	1.7 typ - 2.6 max	1.7 typ - 2.6 max	1.7 typ - 2.6 max
Luminous Intensity @ 20mA	mcd	350 typ	1.6 typ	4.7 typ	4.7 typ

# SERIES WBL SWITCHES

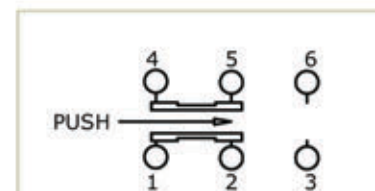


E-SWITCH™

## 2 Pole Option:

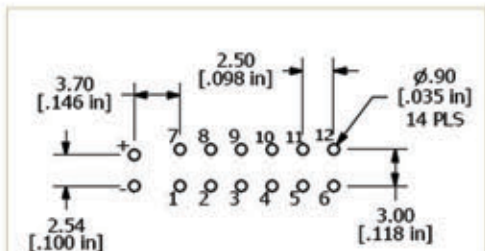
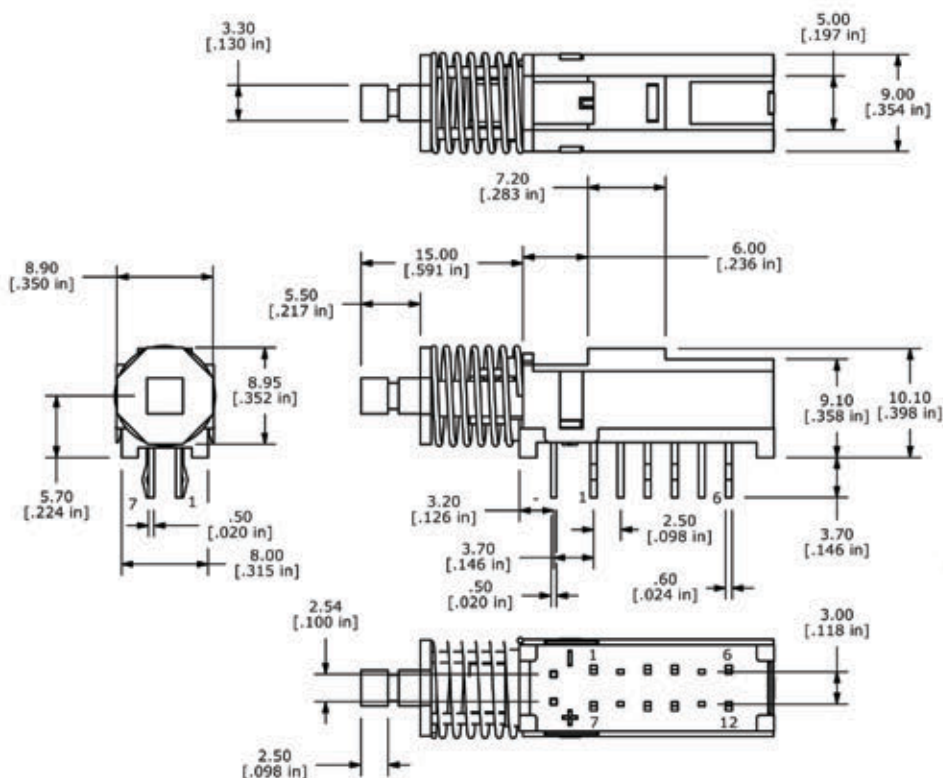


P.C. MOUNTING

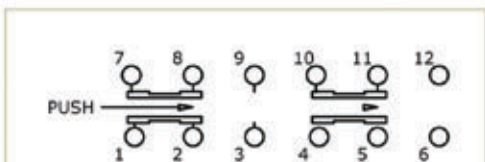


SCHEMATIC

## 4 Pole Option:



P.C. MOUNTING



SCHEMATIC

# Mouser Electronics

Authorized Distributor

Click to View Pricing, Inventory, Delivery & Lifecycle Information:

E-Switch:

[WBL2UEEGQ](#) [WBL2UEERBQ](#) [WBL4UEERBQ](#) [WBL2UOAGQ](#)