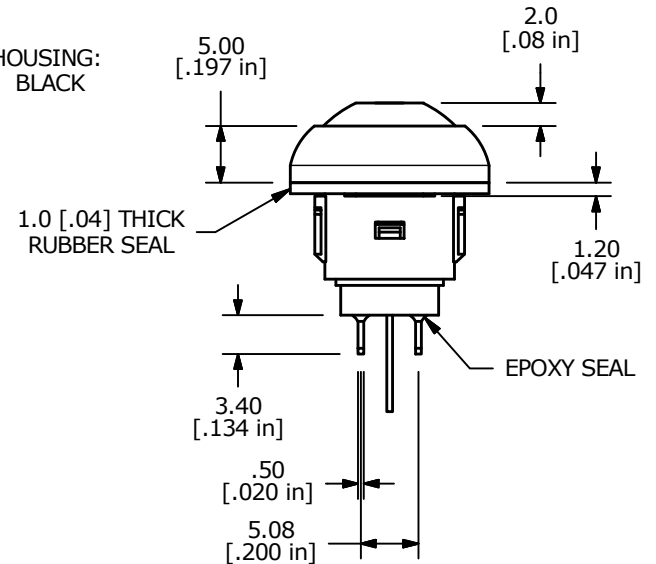
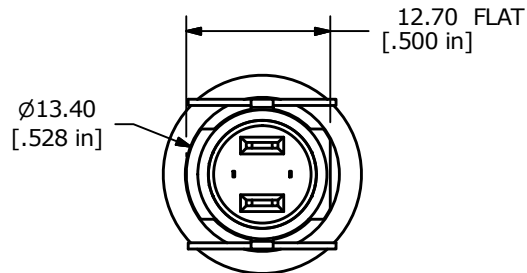
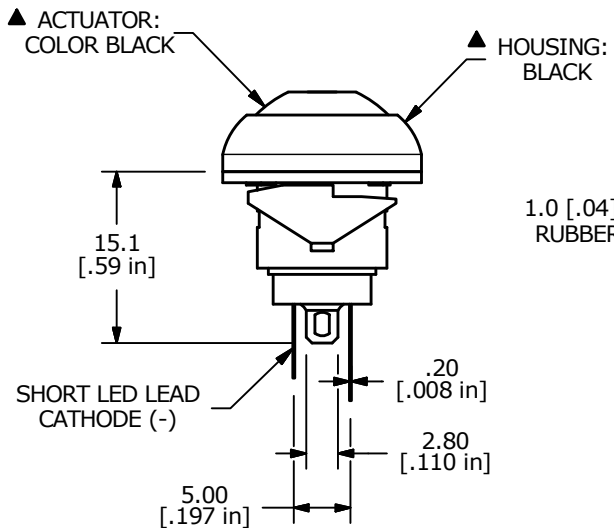



LED PARAMETER	FORWARD CURRENT	FORWARD VOLTAGE @ 20mA	LUMINOUS INTENSITY
UNITS	mA	V	md
BLUE	20	3.1 - 3.6	580

NOTE:

1. ALL DIMENSIONS IN MM [INCH]
2. GENERAL TOLERANCE: X.X = ± 0.4
X.XX = ± 0.25
3. TERMINAL NUMBERS FOR REF ONLY
4. CIRCUIT: SPST OFF-MOMENTARY ON
5. CONTACT MATERIAL: Gold over SILVER
6. RATING: 125mA @ 125 VAC
100mA @ 50 VDC
7. ELECTRIC LIFE: 500,000 CYCLES AT FULL LOAD
8. CONTACT RESISTANCE: 50 milli-OHM max. (INITIAL)
9. INSULATION RESISTANCE: 1,000 MEGA-OHM min. @ 500VDC
10. DIELECTRIC STRENGTH: 1,000 VAC rms.
11. OPERATING FORCE: 350 gf +/- 150 gf
12. OPERATING TEMPERATURE: -30°C to +85°C
13. CONTACT BOUNCE: 10ms MAX.

- ▲ 14. TRAVEL: 1.5mm
- 15. PANEL THICKNESS RANGE: 0.8 - 1.8mm
- 16. ▲ DENOTES CRITICAL PARAMETER.
- 17. 2011/65/EU (ROHS) COMPLIANT
- ▲ 18. HARDWARE INCLUDED:
 - 1. T081100 RUBBER SEAL (1)
- 19. SEAL RATING: IP67 AT THE FRONT PANEL



F	23328	note 15 to .8 - 1.8mm	4/25/18	MW	 E-SWITCH®				
E	22443	ADDED BOTTOM VIEW	8/12/16	MJR					
D	21595	CHANGE NOTE 19: IP67 WAS IP65	9/25/14	EBP	TITLE RP8100B1M1CEBLKBLKBLU				
REV	PCR NO	DESCRIPTION	DATE	BY					
THE INFORMATION CONTAINED IN THIS DOCUMENT IS PROPRIETARY TO E-SWITCH AND IS NOT TO BE COPIED OR TRANSFERRED					SCALE 3:2	DATE 4/24/2009	DR BLR	DWG ST081041	REV F

Mouser Electronics

Authorized Distributor

Click to View Pricing, Inventory, Delivery & Lifecycle Information:

E-Switch:

[RP8100B1M1CEBLKBLKBLU](#)