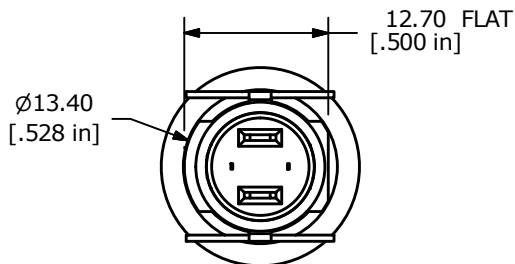
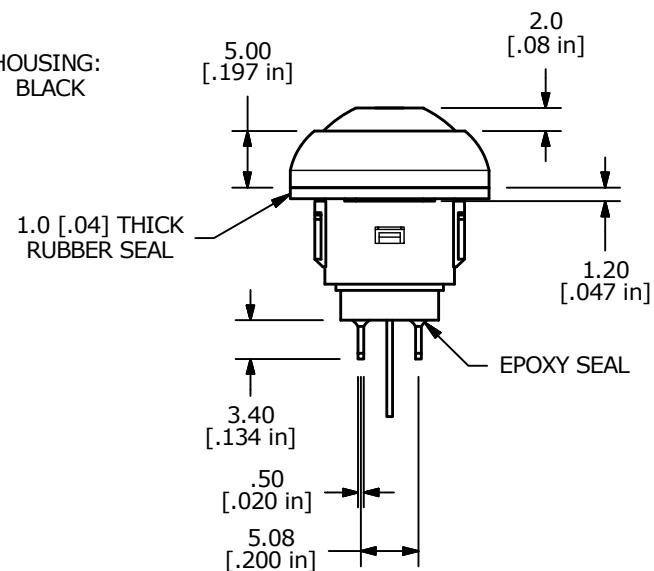
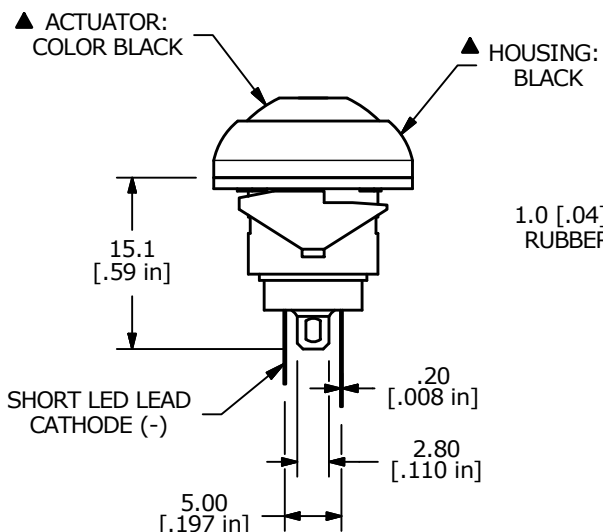



| LED PARAMETER | FORWARD CURRENT | FORWARD VOLTAGE @ 20mA | LUMINOUS INTENSITY |
|---------------|-----------------|------------------------|--------------------|
| UNITS | mA | V | mcd |
| RED | 20 | 2.0 - 2.5 | 700 |

NOTE:

1. ALL DIMENSIONS IN MM [INCH]
2. GENERAL TOLERANCE: X.X = ± 0.4
X.XX = ± 0.25
3. TERMINAL NUMBERS FOR REF ONLY
4. CIRCUIT: SPST OFF-MOMENTARY ON
5. CONTACT MATERIAL: Gold over SILVER
- ▲ 6. RATING: 125mA @ 125 VAC
100mA @ 50 VDC
7. ELECTRIC LIFE: 500,000 CYCLES AT FULL LOAD
8. CONTACT RESISTANCE: 50 milli-OHM max. (INITIAL)
9. INSULATION RESISTANCE: 1,000 MEGA-OHM min. @ 500VDC
10. DIELECTRIC STRENGTH: 1,000 VAC rms.
11. OPERATING FORCE: 350 gf +/- 150 gf
12. OPERATING TEMPERATURE: -30°C to +85°C
13. CONTACT BOUNCE: 10ms MAX.
- ▲ 14. TRAVEL: 1.5mm
15. PANEL THICKNESS RANGE: 0.8 - 1.8mm
16. ▲ DENOTES CRITICAL PARAMETER.
17. 2011/65/EU (ROHS) COMPLIANT
- ▲ 18. HARDWARE INCLUDED:
1. T081100 RUBBER SEAL (1)
19. SEAL RATING: IP67 AT THE FRONT PANEL



| | | | | | | | | | |
|--|--------|-------------------------------|---------|-----|--|----------------|--------|--------------|-------|
| F | 23328 | note 15 to .8 - 1.8mm | 4/25/18 | MW |  E-SWITCH® | | | | |
| E | 22442 | ADDED BOTTOM VIEW | 8/12/16 | MJR | | | | | |
| D | 21595 | CHANGE NOTE 19: IP67 WAS IP65 | 9/25/14 | EBP | TITLE RP8100B1M1CEBLKBLKRED | | | | |
| REV | PCR NO | DESCRIPTION | DATE | BY | SCALE 3:2 | DATE 4/24/2009 | DR BLR | DWG ST081040 | REV F |
| THE INFORMATION CONTAINED IN THIS DOCUMENT IS PROPRIETARY TO E-SWITCH AND IS NOT TO BE COPIED OR TRANSFERRED | | | | | | | | | |

Mouser Electronics

Authorized Distributor

Click to View Pricing, Inventory, Delivery & Lifecycle Information:

E-Switch:

[RP8100B1M1CEBLKBLKRED](#)