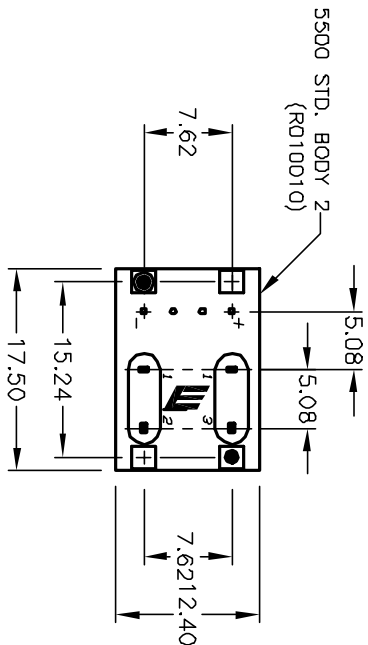
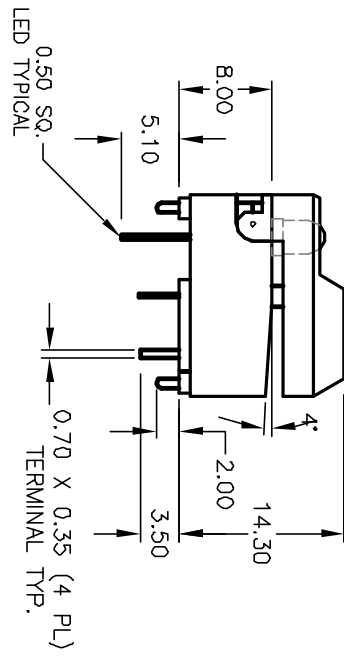


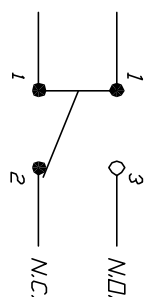
RECOMMENDED P.C.B. LAYOUT



LED SPECIFICATION	SYMBOL	GRN L.E.D		UNITS
		MAX.	MIN.	
POWER DISSIPATION	P _d	100	--	mW
FORWARD VOLTAGE	V _f	2.8	1.9	V
REVERSE VOLTAGE	V _r	5		V
EMISSION WAVELENGTH	λ _p		570	nm
AVE. FORWARD CURRENT	I _{af}	30	--	mA
REVERSE CURRENT	I _r	100	--	μA
LUMINOUS INTENSITY	I _v		6.0	mcđ

NOTES:

1. ALL DIMENSIONS IN MM
2. GENERAL TOLERANCE: X.X=±0.4
X.XX=±0.25
3. TERM. NO. FOR REF. ONLY
4. RATING: 12mA @24V
5. FIXED CONTACT/MOVING CONTACT:
COPPER ALLOY W/GOLD PLATE
6. CONTACT BOUNCE: <5m SEC.
7. CONTACT RESISTANCE: <50milil--OHMS
8. TRAVEL: 2.5±0.2mm
9. OPERATING TEMP. RANGE: -20°C to +80°C



CIRCUIT: SPDT
CONTACT CONFIGURATION

E-SWITCH®

TITLE		SCALE		DATE		DR		DWG		REV	
5501-M-8-2		1.5:1		5/15/02		CJB		XR0144P		A	
RELEASED		5/15/02		DATE		CHKD					
DESCRIPTION											
REV.		ECN No.									
A		12153									

THE INFORMATION CONTAINED IN THIS DOCUMENT IS PROPRIETARY TO E-SWITCH AND IS NOT TO BE COPIED OR TRANSFERRED

Mouser Electronics

Authorized Distributor

Click to View Pricing, Inventory, Delivery & Lifecycle Information:

[E-Switch:](#)

[5501M82](#)