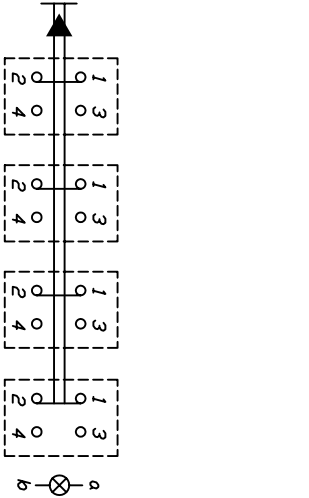
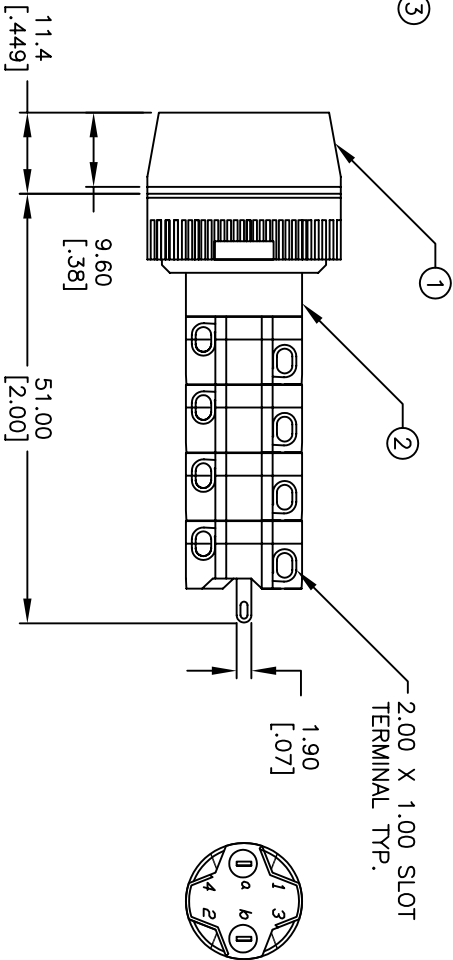
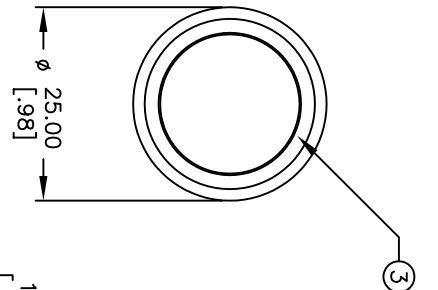


RECOMMENDED PANEL MOUNTING



4PST
CONTACT CONFIGURATION



- NOTES:
1. ALL DIMENSIONS IN MM [INCH]
 2. GENERAL TOLERANCE: X.X=±0.4
X.XX=±0.25
 - ▲3. RATINGS: 250VAC @ 5 AMPS, 24VDC @ 6A
 4. ELECTRICAL LIFE: 50,000 MAKE AND BREAK CYCLES.
 5. OPERATION TEMP: -25°C TO +55°C
 - ▲6. LAMP VOLTAGE: 6V AC/DC INCANDESCENT 200mA
 7. PACKAGE: BOX/20 PIECES PER
 8. ▲DENOTES CRITICAL PARAMETER.
 9. 2002/95/EC (ROHS) COMPLANT

PARTS LIST			
Item	Qty.	Dwg. No.	Part No.
1	1	F051702	25mm RING FOR LA SERIES
2	1	F060605	LASEEV140
3	1	F060253	25mm WHT LENS
-	1	F050402	50-004-02 (LAMP)



					TITLE				
					LASEEV144WHT				
A	16926	RELEASED FOR PRODUCTION	1/26/07	TN					
REV.	ECN NO.	DESCRIPTION	DATE	CHKD					
THE INFORMATION CONTAINED IN THIS DOCUMENT IS PROPRIETARY TO E-SWITCH AND IS NOT TO BE COPIED OR TRANSFERRED									
					</				

Mouser Electronics

Authorized Distributor

Click to View Pricing, Inventory, Delivery & Lifecycle Information:

E-Switch:

[LASEEV14AWHT](#)