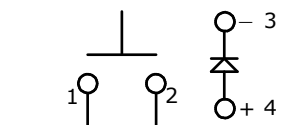
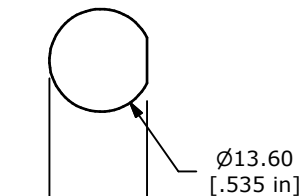


PANEL MOUNTING



▲ **CIRCUIT: SPST**
OFF-(ON)
MOMENTARY

12.90
[.508 in]

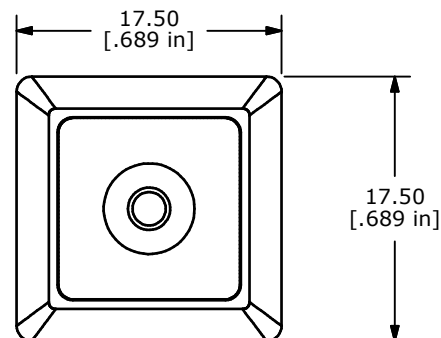


Ø13.60
[.535 in]

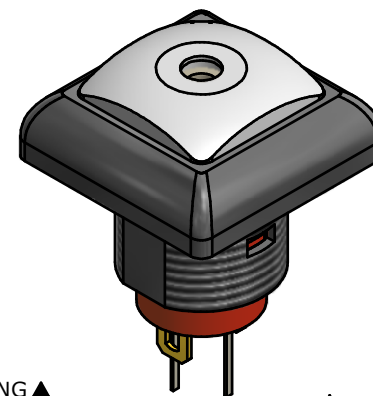
LED SPECS	UNITS	GREEN ▲
FORWARD CURRENT	mA	20
FORWARD VOLTAGE @20mA	V	2.0-2.6
LUMINOUS INTENSITY @ 20mA	mcd	42-80

NOTE:

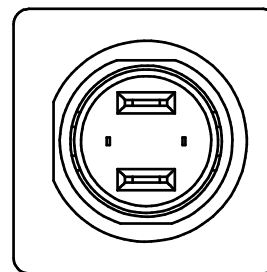
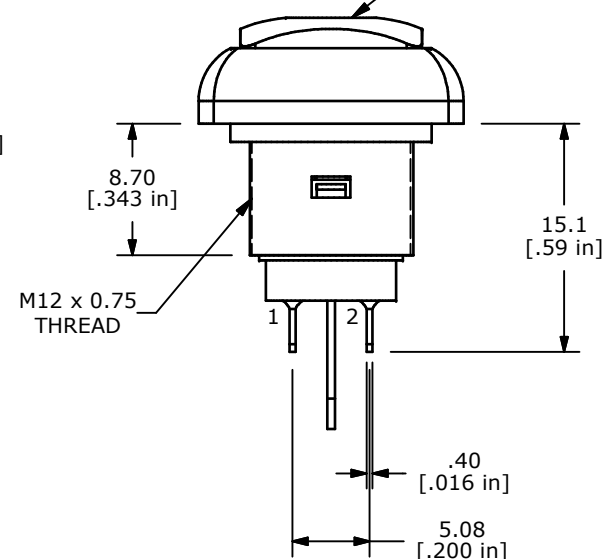
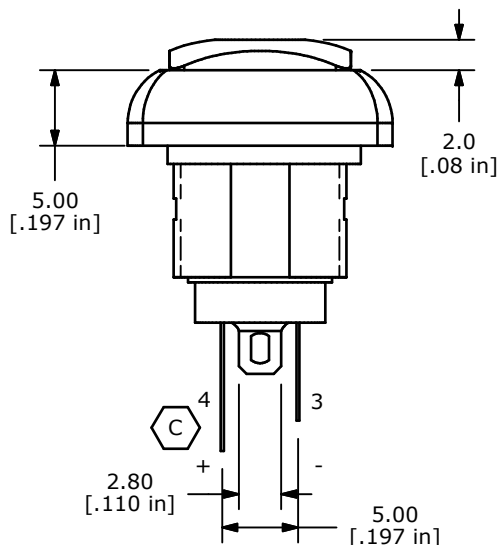
- ALL DIMENSIONS IN MM [INCH]
- GENERAL TOLERANCE: X.X=±0.4
X.XX=±0.25
- TERMINAL NUMBERS FOR REF ONLY
- CIRCUIT: SPST OFF-MOMENTARY ON
- CONTACT MATERIAL: Gold OVER SILVER
- RATING: 500mA @ 48 VAC
200mA @ 50 VDC
200mA @250 VAC
- ELECTRIC LIFE: 500,000 CYCLES AT FULL LOAD
- CONTACT RESISTANCE: 50 MILLIOHM MAX. (INITIAL)
- INSULATION RESISTANCE: 1,000 MEGA-OHM MIN. @ 500VDC.
- DIELECTRIC STRENGTH: 1,500 VAC FOR 1 MINUTE.
- ▲ 11. OPERATING FORCE: 350 gf +/- 150 gf
12. OPERATING TEMPERATURE: -30°C TO +85°C.
13. CONTACT BOUNCE: 10ms MAX.
14. TRAVEL: 1.5±0.25MM
15. PANEL THICKNESS RANGE: 1.5 - 4.0 mm.
16. ▲ DENOTES CRITICAL PARAMETER.
17. 2002/95/EC (ROHS) COMPLIANT
18. MAX TORQUE APPLIED TO MOUNTING NUT: 1.5Nm
19. HARDWARE INCLUDED:
 - T081101 LOCK WASHER (QTY 1)
 - T081102 HEX NUT (QTY 1)
 - T081103 RUBBER O-RING (QTY 1)
20. SEAL RATING: IP67 TO FRONT PANEL



BLACK METAL HOUSING ▲



▲ WHITE
BUTTON



D	21600	CHANGE SEAL RATING FROM IP65 TO IP67	10/1/14	EBP
C	21493	FIX LED LEAD POSITIONS AND POLARITY	6/25/14	EBP
B	20741	CORRECT + AND - NOTATION ON DRAWING	9/7/12	EBP
A	20673	NEW RELEASE	7/23/12	RC
REV	PCR NO	DESCRIPTION	DATE	BY

THE INFORMATION CONTAINED IN THIS DOCUMENT IS PROPRIETARY
TO E-SWITCH AND IS NOT TO BE COPIED OR TRANSFERRED



TITLE RP8400B2M1CEBLKWHTGRN

SCALE	DATE 7/23/2012	DR RC	DWG ST084010	REV D
-------	-------------------	----------	-----------------	----------

Mouser Electronics

Authorized Distributor

Click to View Pricing, Inventory, Delivery & Lifecycle Information:

E-Switch:

[RP8400B2M1CEBLKWHTGRN](#)