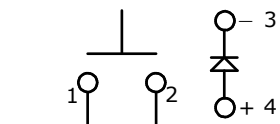
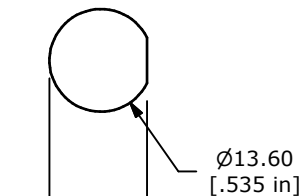


## PANEL MOUNTING



▲ **CIRCUIT: SPST**  
OFF-(ON)  
MOMENTARY

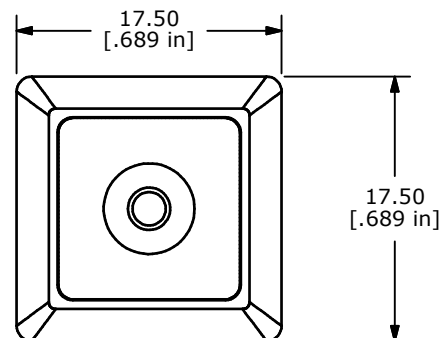
12.90  
[.508 in]



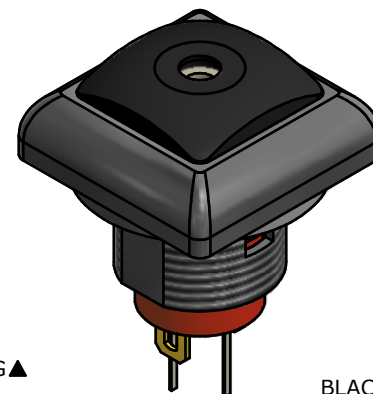
LED SPECS	UNITS	RED
FORWARD CURRENT	mA	20
FORWARD VOLTAGE @20mA	V	2.1-2.6
LUMINOUS INTENSITY @ 20mA	mcd	42-100

## NOTE:

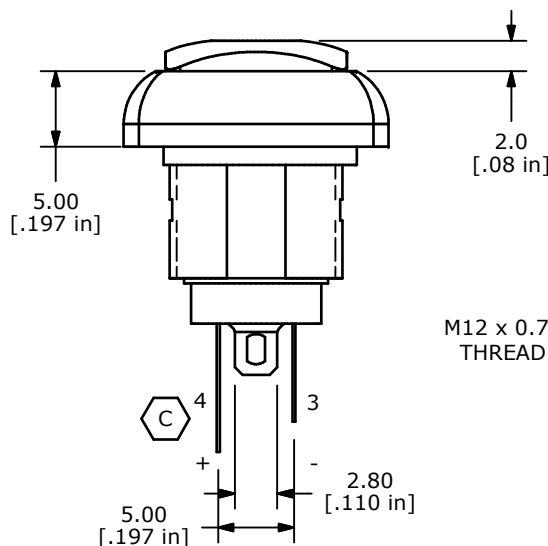
1. ALL DIMENSIONS IN MM [INCH]
2. GENERAL TOLERANCE: X.X=±0.4  
X.XX=±0.25
3. TERMINAL NUMBERS FOR REF ONLY
4. CIRCUIT: SPST OFF-MOMENTARY ON
5. CONTACT MATERIAL: Gold OVER SILVER
6. RATING: 500mA @ 48 VAC  
200mA @ 50 VDC  
200mA @250 VAC
7. ELECTRIC LIFE: 500,000 CYCLES AT FULL LOAD
8. CONTACT RESISTANCE: 50 MILLIOHM MAX. (INITIAL)
9. INSULATION RESISTANCE: 1,000 MEGA-OHM MIN. @ 500VDC.
10. DIELECTRIC STRENGTH: 1,500 VAC FOR 1 MINUTE.
- ▲ 11. OPERATING FORCE: 350 gf +/- 150 gf
12. OPERATING TEMPERATURE: -30°C TO +85°C.
13. CONTACT BOUNCE: 10ms MAX.
14. TRAVEL: 1.5±0.25MM
15. PANEL THICKNESS RANGE: 1.5 - 4.0 mm.
16. ▲ DENOTES CRITICAL PARAMETER.
17. 2002/95/EC (ROHS) COMPLIANT
18. MAX TORQUE APPLIED TO MOUNTING NUT: 1.5Nm
19. HARDWARE INCLUDED:  
1) T081101 LOCK WASHER (QTY 1)  
2) T081102 HEX NUT (QTY 1)  
3) T081103 RUBBER O-RING (QTY 1)
20. SEAL RATING: IP67 TO FRONT PANEL



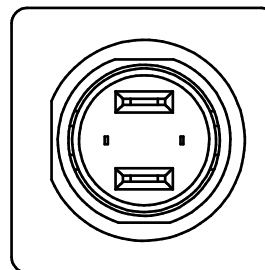
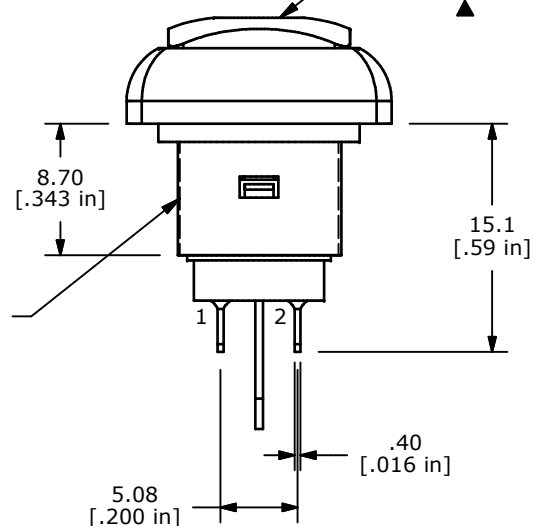
BLACK METAL HOUSING ▲



BLACK  
BUTTON ▲



M12 x 0.75  
THREAD



D	21600	CHANGE SEAL RATING FROM IP65 TO IP67	10/1/14	EBP
C	21493	FIX LED LEAD POSITIONS AND POLARITY	6/25/14	EBP
B	19916	ADD LED LEADS	05/05/11	BMA
A	19908	NEW RELEASE	05/04/11	BMA
REV	PCR NO	DESCRIPTION	DATE	BY

THE INFORMATION CONTAINED IN THIS DOCUMENT IS PROPRIETARY  
TO E-SWITCH AND IS NOT TO BE COPIED OR TRANSFERRED



TITLE RP8400B2M1CEBLKBLKRED

SCALE 2:1

DATE 5/4/2011

DR BMA

DWG ST084003

REV D

# Mouser Electronics

Authorized Distributor

Click to View Pricing, Inventory, Delivery & Lifecycle Information:

E-Switch:

[RP8400B2M1CEBLKBLKRED](#)