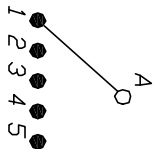


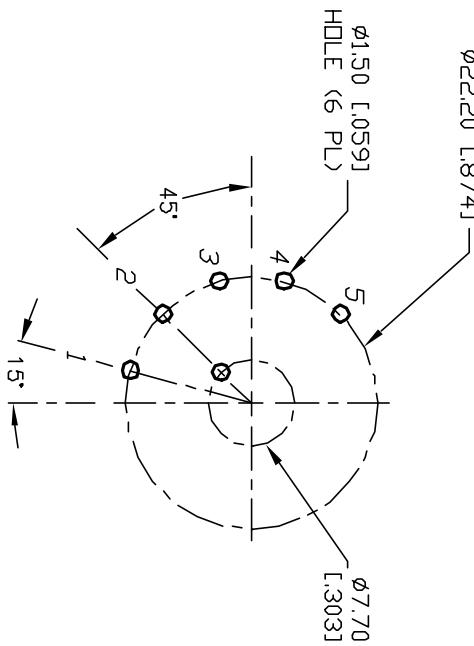
NOTES:

1. ALL DIMENSION IN MM [INCH]
2. GENERAL TOLERANCE: $X.X = \pm 0.4$
 $X.XX = \pm 0.25$
3. TERM. NOS. FOR REF. ONLY
4. CONTACT RATING SWITCHING: 150mA, 250V AC/DC
350mA, 110V AC/DC
5. CONTACT RATING (NON-SWITCHING) 5A
6. CONTACT MATERIAL:
STANDARD SILVER over COPPER ALLOY
7. OPERATING FORCE: 425±100 CM/STANDARD
8. OPERATING TEMP: -30° to 85°C
9. CIRCUIT SP: 5 POSITIONS, 30° INDEX,
10. DIELECTRIC STRENGTH 1000V RMS min. @ SEA LEVEL
11. HARDWARE SUPPLIED ON SWITCH- SEE BELOW
STOP RING, LOCKWASHER, & HEXNUT
12. ▲ DENOTES CRITICAL PARAMETER.

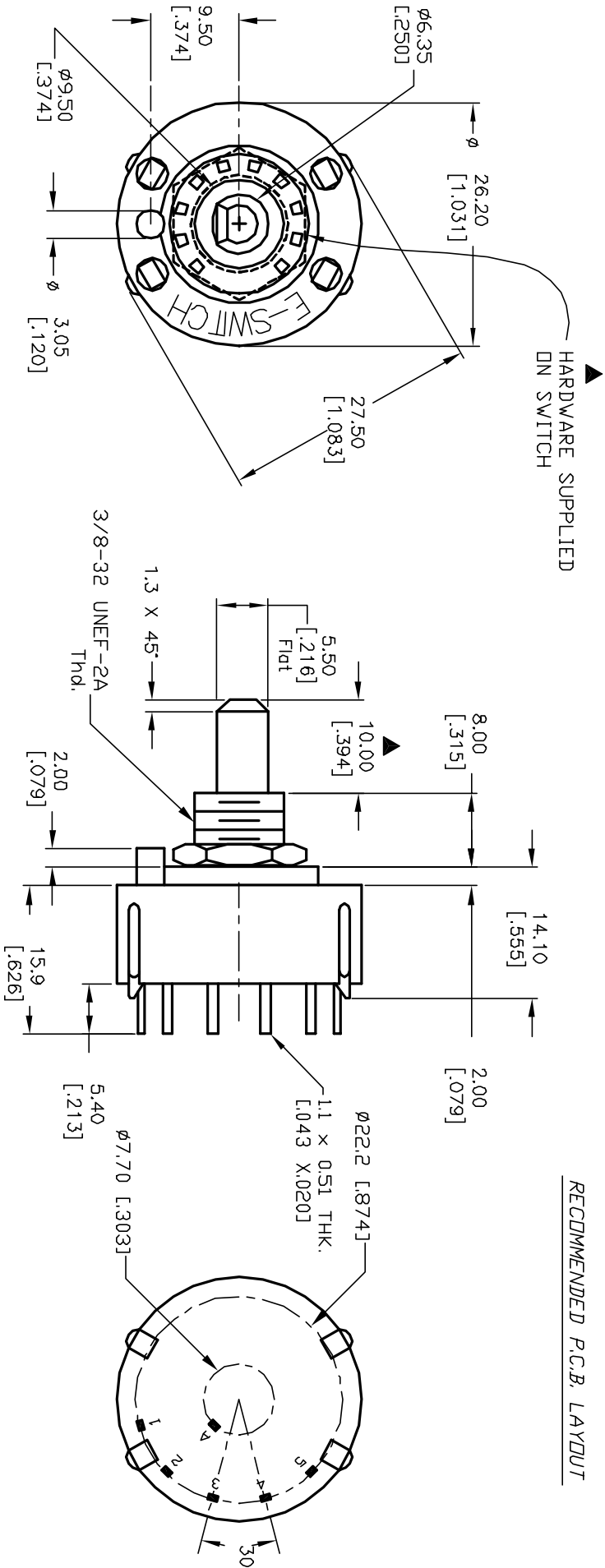


CONTACT CONFIGURATION

Timing: NON-SHORTING (BBM)



RECOMMENDED P.C.B. LAYOUT



				E-SWITCH®			
				TITLE			
A	13148	RELEASED FOR PRODUCTION	5/22/03	AR	KC15A10.001NPS		
REV.	ECN No.	DESCRIPTION	DATE	CHKD	DR	DWG	REV
THE INFORMATION CONTAINED IN THIS DOCUMENT IS PROPRIETARY TO E-SWITCH AND IS NOT TO BE COPIED OR TRANSFERRED				SCALE	1.5:1	DATE	5/22/03
					AR	G527542	A

Mouser Electronics

Authorized Distributor

Click to View Pricing, Inventory, Delivery & Lifecycle Information:

[E-Switch:](#)

[KC15A10.001NPS](#)