

#### MATERIALS

BODY:  
Phenolic, UL94 V-0

ACTUATOR:  
Nickel Plated Brass

BUSHING:  
Nickel Plated Brass

HOUSING:  
Stainless Steel

HARDWARE:  
Nickel Plated Steel

FUNCTION PLATE:  
Stainless Steel

SPACER PLATE:  
Laminate Board

SPRING:  
Steel

PLUNGER:  
Nylon

MOBILE CONTACT:  
Silver Plated Copper

MOBILE CONTACT PIVOT:  
Silver Plated Copper

CONTACTS:  
Silver Alloy Clad Copper

TERMINALS:  
Brass

#### SPECIFICATIONS

FUNCTION:  
1P1T OFF-ON

RATINGS:  
ANSI/UL1054 and CAN/CSA C22.2 No.55 (E194579):  
20A 125VAC [cURus]  
15A 277VAC [cURus]  
2HP 125/277VAC [cURus]

CONTACT RESISTANCE:  
Initial: 50mΩ Max. at 50VAC

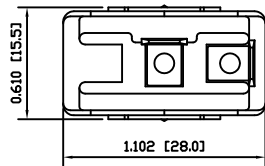
INSULATION RESISTANCE:  
800MΩ Min. at 500VDC

DIELECTRIC STRENGTH:  
1,500VAC for 1 Minute

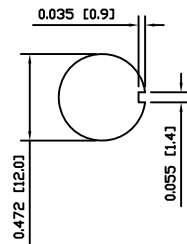
OPERATING LIFE:  
6,000 Cycles [cURus]

TEMPERATURE:  
Operating: -20°C to 85°C [cURus]

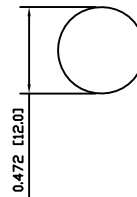
APPROVALS:



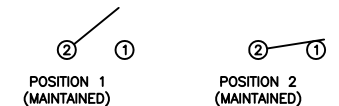
#### SUGGESTED PANEL CUTOUT



#### ALTERNATE PANEL CUTOUT



#### SCHEMATIC





ACTUATOR	A	09/05/26	CAB
BODY	A	09/06/03	CAB
MATERIALS	A	09/05/26	CAB
SPECIFICATIONS	A	09/05/26	CAB
REFERENCE	REV.	DATE	BY

THE INFORMATION CONTAINED IN THIS DOCUMENT IS PROPRIETARY TO E-SWITCH AND IS NOT TO BE COPIED OR TRANSFERRED

A	INITIAL RELEASE	PCRD0017	09/06/30	CAB
REV.	DESCRIPTION	PCR	DATE	DRAWN BY

DIMENSIONS	INCHES [MILLIMETERS]
GENERAL TOLERANCES	±0.008 [±0.2] / ±1°
SCALE	DRAWING NOT TO SCALE
PROJECTION	1st Angle

 E ♦ SWITCH <sup>®</sup>		 <b>LAMB<sup>®</sup></b> <b>INDUSTRIES</b>	
ST14MD02			
DRAWING NUMBER		DATE	REVISION
34-ST14MD02		JUNE 30, 2009	A

# Mouser Electronics

Authorized Distributor

Click to View Pricing, Inventory, Delivery & Lifecycle Information:

[E-Switch:](#)

[ST14MD02](#)