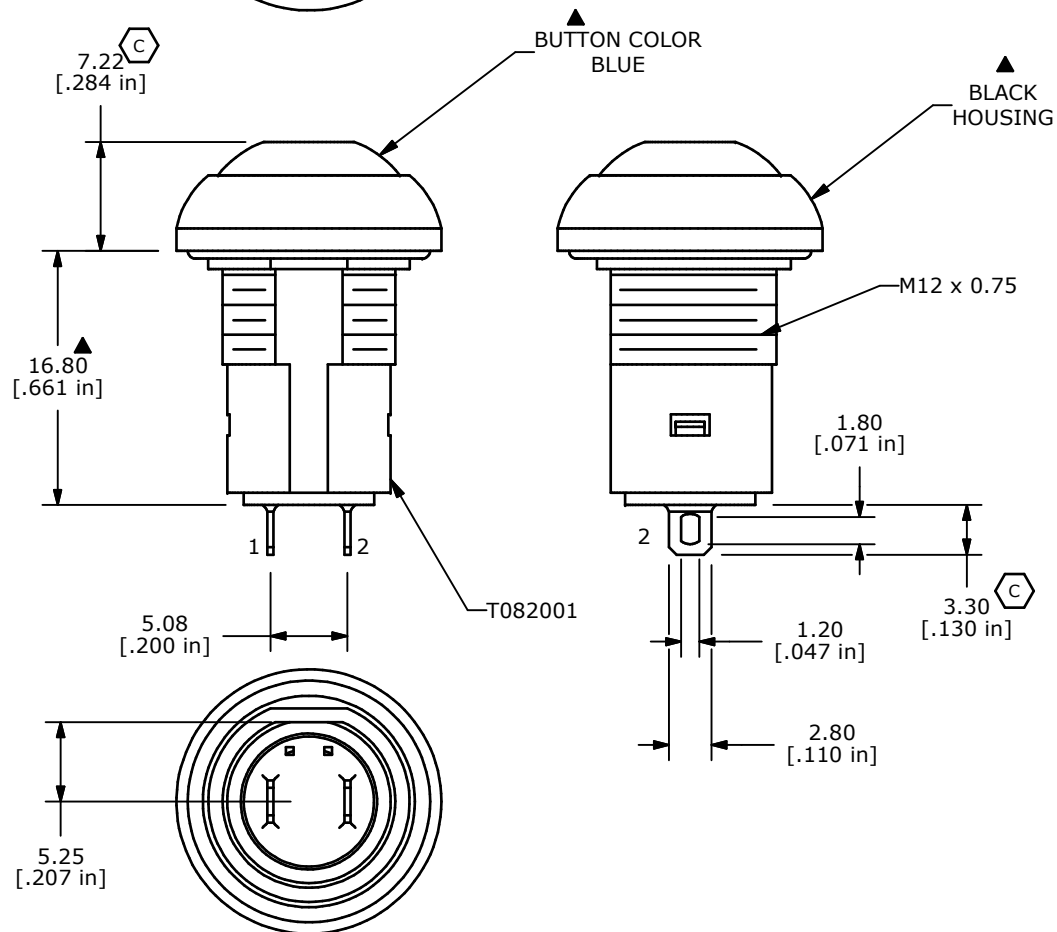
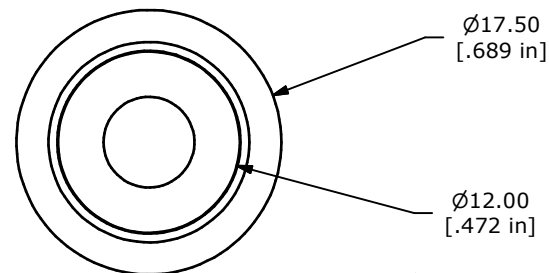


▲ CIRCUIT: SPST
OFF-ON
LATCHING

NOTE:

1. ALL DIMENSIONS IN MM [INCH]
2. GENERAL TOLERANCE: X.X=±0.4
X.XX=±0.25
3. TERMINAL NUMBERS FOR REF ONLY
4. CIRCUIT: SPST OFF-ON (LATCHING)
5. CONTACT MATERIAL: Gold over SILVER
6. RATING: 100mA @ 24 VDC
7. ELECTRIC LIFE: 200,000 CYCLES AT FULL LOAD
8. CONTACT RESISTANCE: 100 milli-OHM max. (INITIAL)
9. INSULATION RESISTANCE: 1,000 MEGA-OHM min. @ 500VDC.
10. DIELECTRIC STRENGTH: 1,000 VAC rms.
- ▲ 11. OPERATING FORCE: 560 gf +/- 150 gf
12. OPERATING TEMPERATURE: -30°C TO +85°C.
13. CONTACT BOUNCE: 10ms MAX.
- ▲ 14. FULL TRAVEL: 2.5±0.25mm
15. PANEL THICKNESS RANGE: 1.5 - 4.0 mm.
16. ▲ DENOTES CRITICAL PARAMETER.
17. 2002/95/EC (ROHS) COMPLIANT
18. MAX. MOUNTING TORQUE: 1.5Nm APPLIED TO THE HEX NUT
19. MOUNTING HARDWARE INCLUDED:
 - T081101 LOCK WASHER (QTY 1)
 - T081102 HEX NUT (QTY 1)
 - T081103 O-RING (QTY 1)
20. SEAL RATING: IP67 AT THE FRONT PANEL



D	21597	CHANGE SEAL RATING FROM IP65 TO IP67	9/29/14	EBP
C	19895	DIMENSION CHANGES WAS 7.0 & 3.4	5/3/11	BGL
B	19358	MISC. DRAWING UPDATES	10/26/10	BMA
A	19126	New Release	6/7/10	rc
REV	PCR NO	DESCRIPTION	DATE	BY

THE INFORMATION CONTAINED IN THIS DOCUMENT IS PROPRIETARY
TO E-SWITCH AND IS NOT TO BE COPIED OR TRANSFERRED



TITLE RP8200B2M1CEBLKBLUNIL

SCALE 2 : 1

DATE 6/7/2010

DR rc

DWG ST082001

REV D

Mouser Electronics

Authorized Distributor

Click to View Pricing, Inventory, Delivery & Lifecycle Information:

E-Switch:

[RP8200B2M1CEBLKBLUNIL](#)