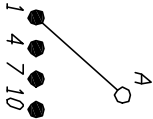


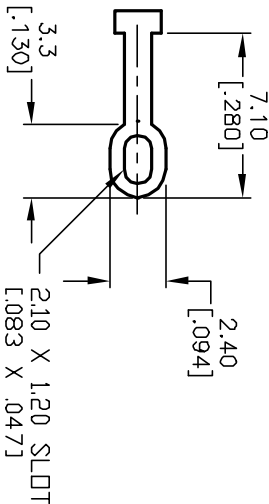
NOTES:

1. ALL DIMENSION IN MM [INCH]
2. GENERAL TOLERANCE: $X.X = \pm 0.4$
 $X.XX = \pm 0.25$
3. TERM. NOS. FOR REF. ONLY
4. CONTACT RATING SWITCHING: 150mA, 250V AC/DC
350mA, 110V AC/DC
5. CONTACT RATING (NON-SWITCHING) 5A
6. OPERATING FORCE: 425 ± 100 CM/STANDARD
7. OPERATING TEMP: -30° to 85°C
8. CIRCUIT SP: 4 POSITIONS, 90° INDEX.
9. DIELECTRIC STRENGTH 1000V RMS min. @ SEA LEVEL
10. DESIGNATE MAJOR DIMENSIONS
11. HARDWARE SUPPLIED ON SWITCH - SEE BELOW
STOP RING, LOCKWASHER, & LOCKNUT



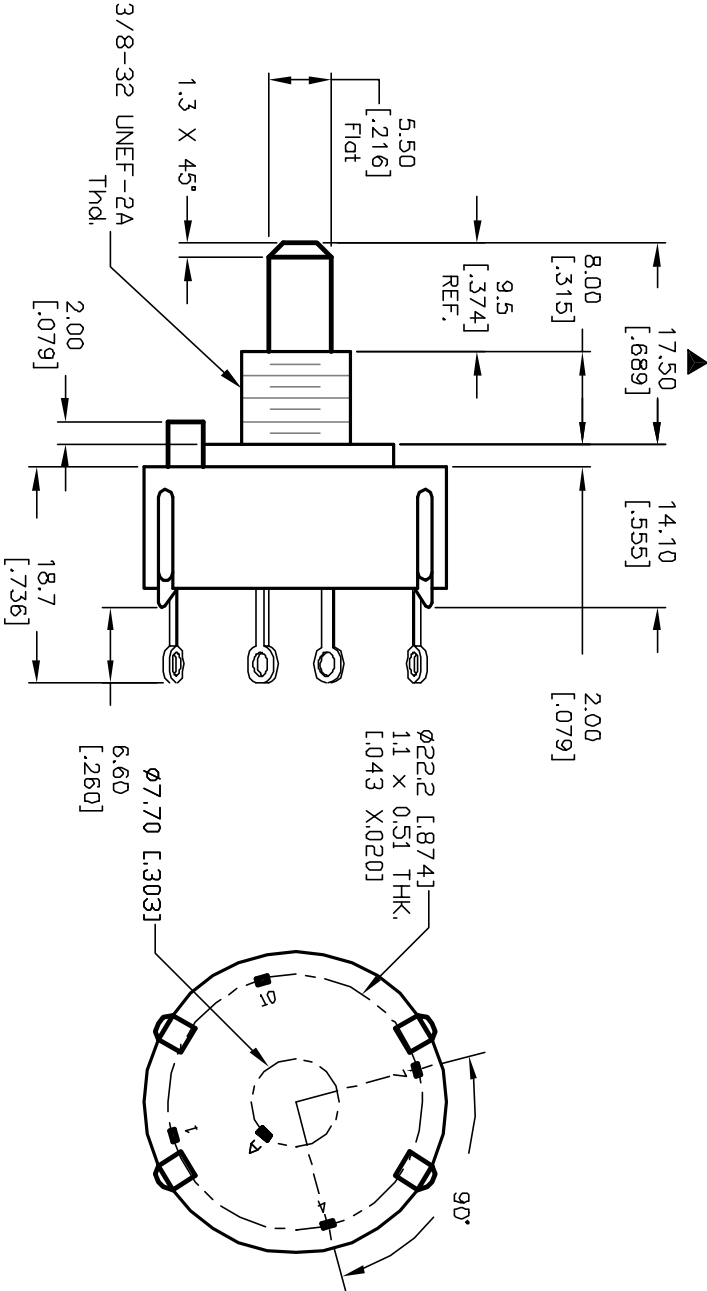
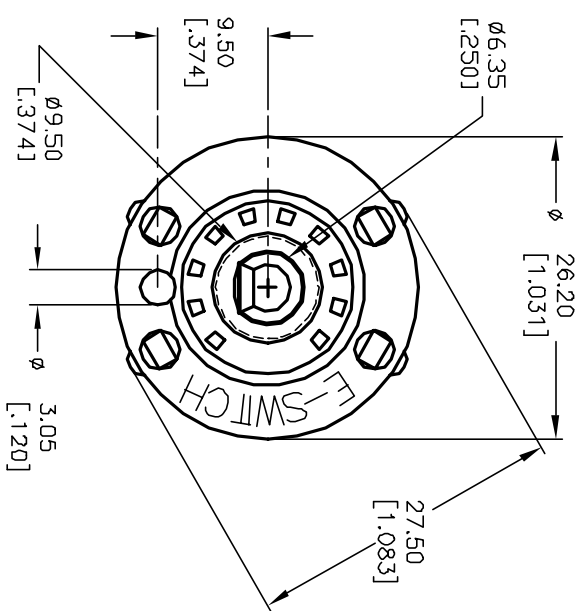
CONTACT CONFIGURATION

Timing: (BBM) Non-Shorting



TERMINATION DETAIL

SCALE 2X



E-SWITCH®				TITLE			
D	12821	REVISED NOTE 11	CJB	2/25/03	CJB	SCALE	1.5:1
C	12434	REV DESC. PER NEW CATALOG	CJB	9/19/02	CJB	DATE	3/12/01
B	11872	REVISED ACTUATOR LENGTH	CJB	12/19/01	CJB	DR	CJB
REV.	ECN No.	DESCRIPTION	DATE	CHKD		DWG	G510990
THE INFORMATION CONTAINED IN THIS DOCUMENT IS PROPRIETARY TO E-SWITCH AND IS NOT TO BE COPIED OR TRANSFERRED				KC-58-A (9.5mm)-01-N-L-S			
				REV D			

Mouser Electronics

Authorized Distributor

Click to View Pricing, Inventory, Delivery & Lifecycle Information:

[E-Switch:](#)

[KC58A9.501NLS](#)