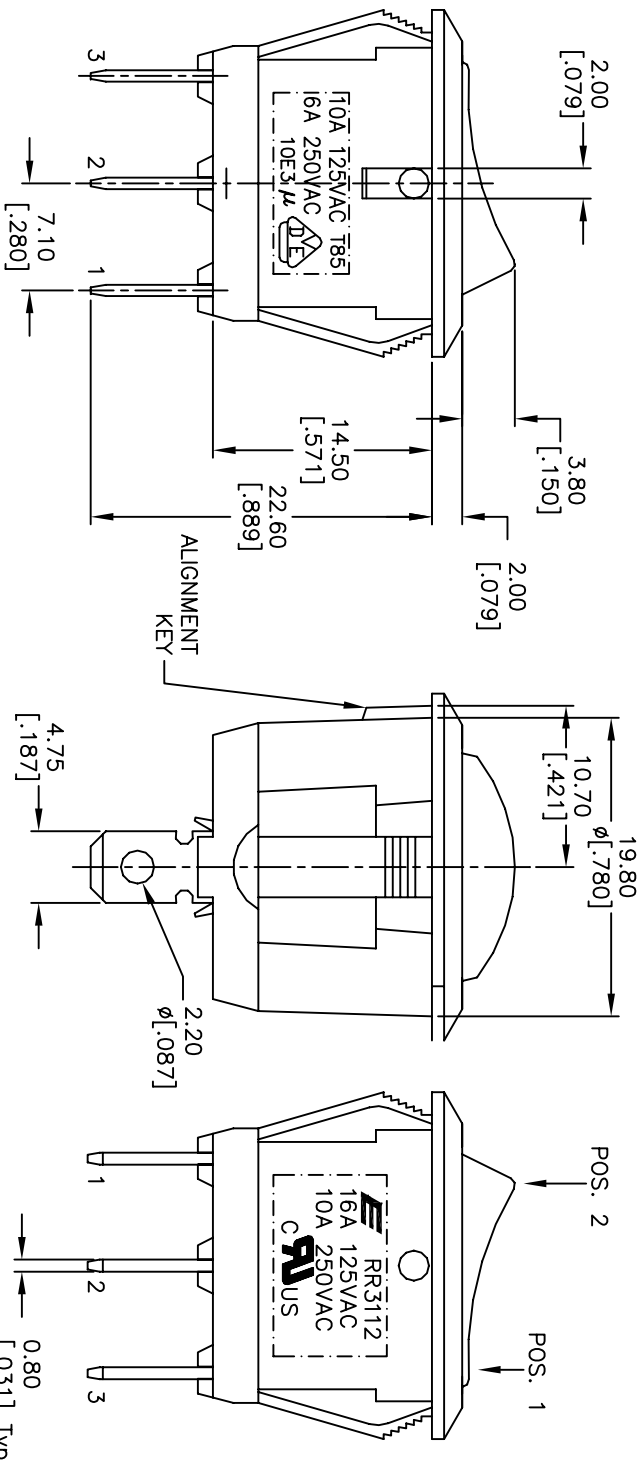
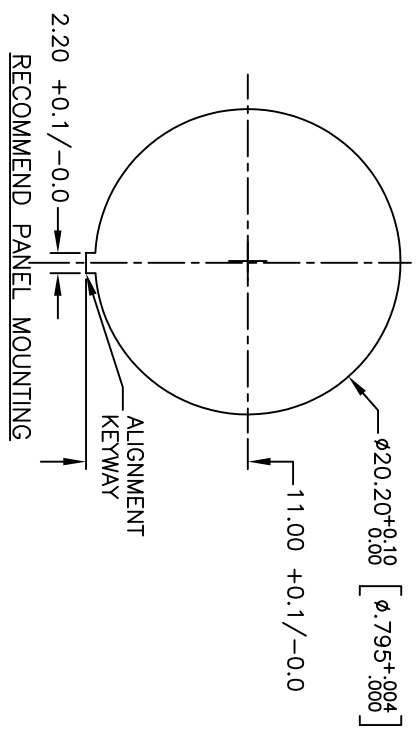


CIRCUIT: 2P, SPST  
CONTACT CONFIGURATION  
ON-OFF (ILLUMINATED)



SWITCH FUNCTION		
POS. 1	POS. 2	
ON	OFF	
2-1	OPEN	

NOTES:

1. ALL DIMENSIONS IN MM [INCH]
2. GENERAL TOLERANCE: 0.0=±0.4  
0.00=±0.25
3. TERM. NOS. FOR REF. ONLY
4. RATING: 16A, 125VAC, 10A, 250VAC UL&CUL APPROVED  
10A 125VAC, 6A 250V AC VDE APPROVED
5. CONTACT RESISTANCE: 50m ohm max.
6. INSULATION RESISTANCE: DC 500V 100M ohm min.
7. DIELECTRIC STRENGTHS: AC 1500V 1 minute
8. OPERATING TEMP.: 0°C to 85°C
9. LAMP: 110V NEON
10. ▲ DENOTES CRITICAL PARAMETER.

TITLE			
RR3112BBLKGRNGRNEF1			
E-SWITCH			
A	16071	RELEASED FOR PRODUCTION	6/5/06
REV.	ECN No.	DESCRIPTION	DATE
THE INFORMATION CONTAINED IN THIS DOCUMENT IS PROPRIETARY TO E-SWITCH AND IS NOT TO BE COPIED OR TRANSFERRED			
CT			
CHKD			
SCALE			
2:1			
DATE			
6/5/06			
DR			
CT			
DWG			
F130458			
REV			
A			

# Mouser Electronics

Authorized Distributor

Click to View Pricing, Inventory, Delivery & Lifecycle Information:

E-Switch:

[RR3112BBLKGRNGRNEF1](#)