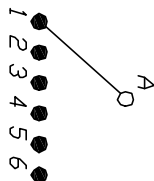
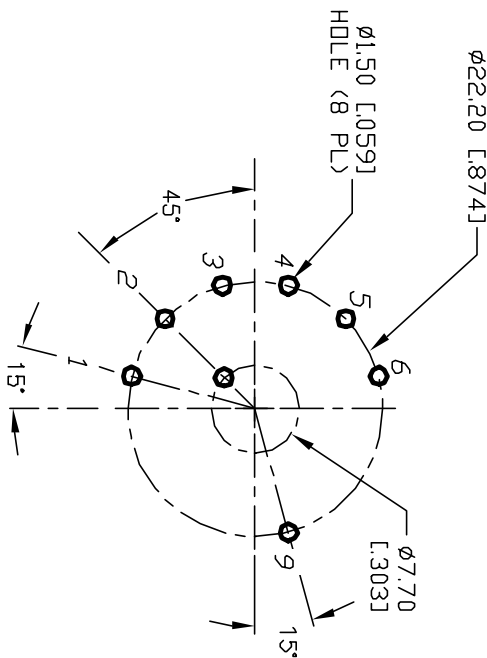


NOTES:

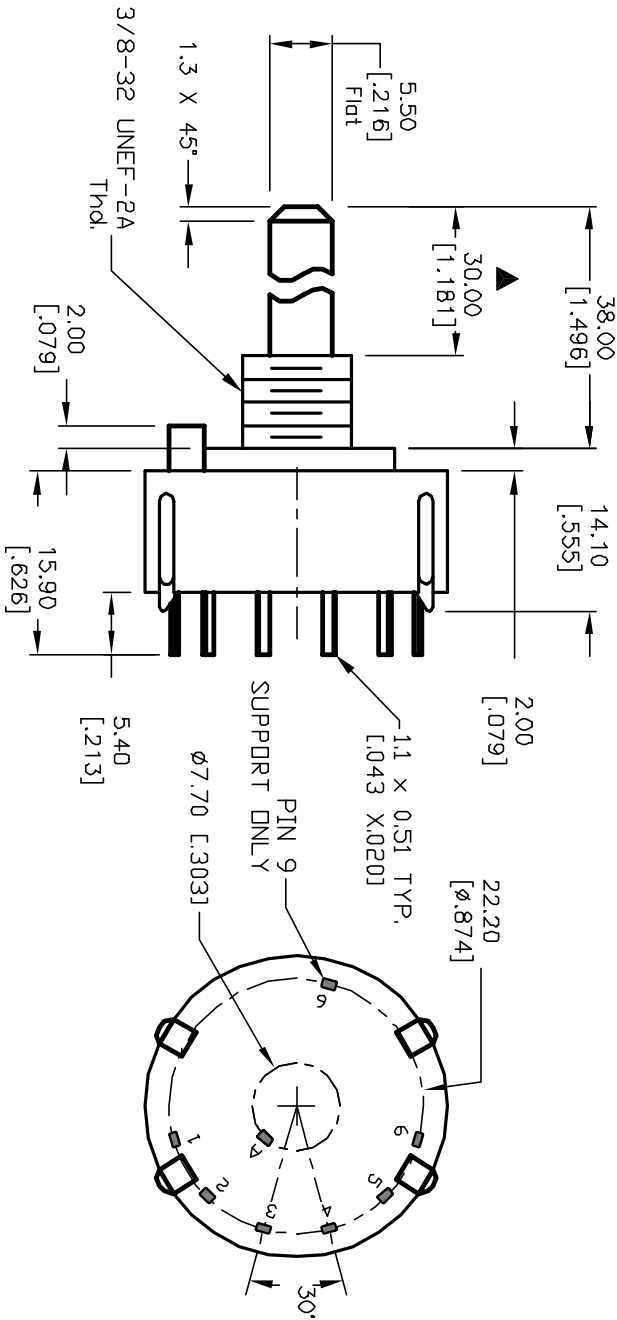
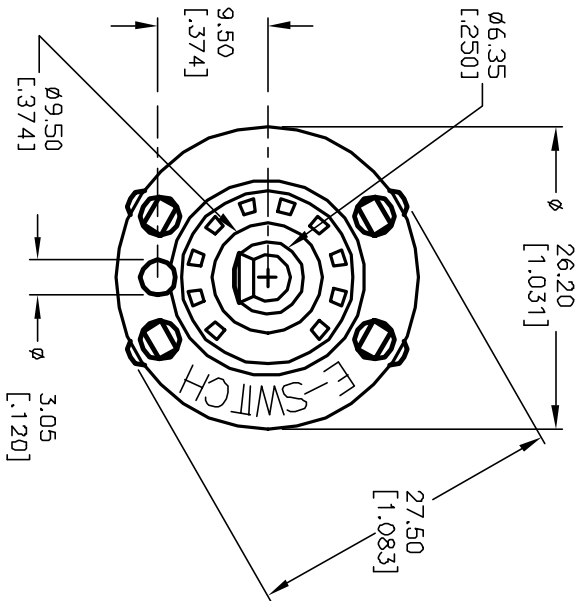
1. ALL DIMENSION IN MM [INCH]
2. GENERAL TOLERANCE: $X.X=\pm 0.4$
 $X.XX=\pm 0.25$
3. TERM. NOS. FOR REF. ONLY
4. CONTACT RATING SWITCHING: 150mA, 250V AC/DC
350mA, 110V AC/DC
5. CONTACT RATING (NON-SWITCHING): 5A
6. OPERATING FORCE: 425 ± 100 CM/STANDARD
7. CONTACT MATERIAL: SILVER OVER COPPER ALLOY
8. OPERATING TEMP: -30° to 85°C
9. CIRCUIT SP: 6 POSITIONS, 30° INDEX.
10. DIELECTRIC STRENGTH: 1000V RMS min. @SEA LEVEL.
11. DESIGNATE MAJOR DIMENSIONS
12. STOP RING, LOCK NUT AND WASHER NOT SHOWN.



CONTACT CONFIGURATION
Timing (BBM) non shorting



RECOMMENDED P.C.B. LAYOUT



E-SWITCH®			
C	12222	REVISED DESCR PER CATALOG	7/3/02
B	11516	REVISED	8/8/01
REV.	ECN No.	DESCRIPTION	DATE
THE INFORMATION CONTAINED IN THIS DOCUMENT IS PROPRIETARY TO E-SWITCH AND ITS NOT TO BE COPIED OR TRANSFERRED			
TITLE		SCALE	DATE
KC-16-A-(30.0mm) 01-N-P-S		1.5:1	8/8/01
DR		DWG	REV
CJB		G510707	C

Mouser Electronics

Authorized Distributor

Click to View Pricing, Inventory, Delivery & Lifecycle Information:

[E-Switch:](#)

[KC16A30.001NPS](#)