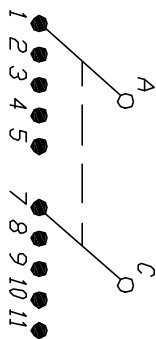


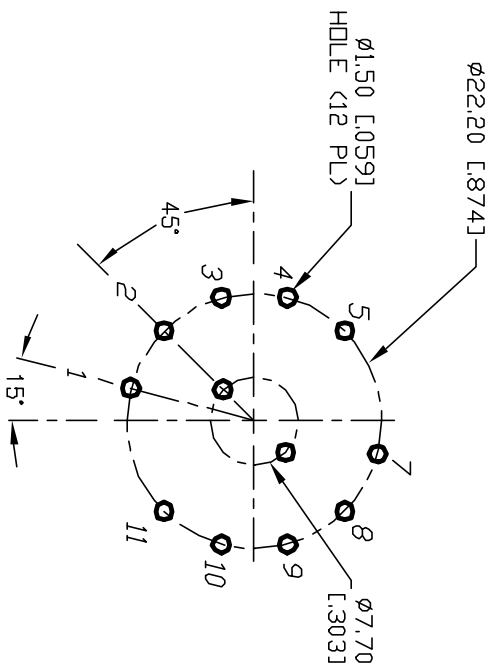
NOTES:

1. ALL DIMENSION IN MM [INCH]
2. GENERAL TOLERANCE:  $X.X=\pm 0.4$   
 $X.XX=\pm 0.25$
3. TERM. NOS. FOR REF. ONLY
4. CONTACT RATING SWITCHING: 150mA, 250V AC/DC  
350mA, 110V AC/DC
5. OPERATING FORCE: 425 $\pm$ 100 CM/STANDARD
6. OPERATING TEMP: -30° to 85°C
7. CIRCUIT 2Pole: 5 POSITIONS, 30° INDEX.
8. DIELECTRIC STRENGTH: 1000V RMS min. @SEA LEVEL
9. DESIGNATE MAJOR DIMENSIONS
10. SUPPLIED LOCK NUT AND WASHER (NOT SHOWN).

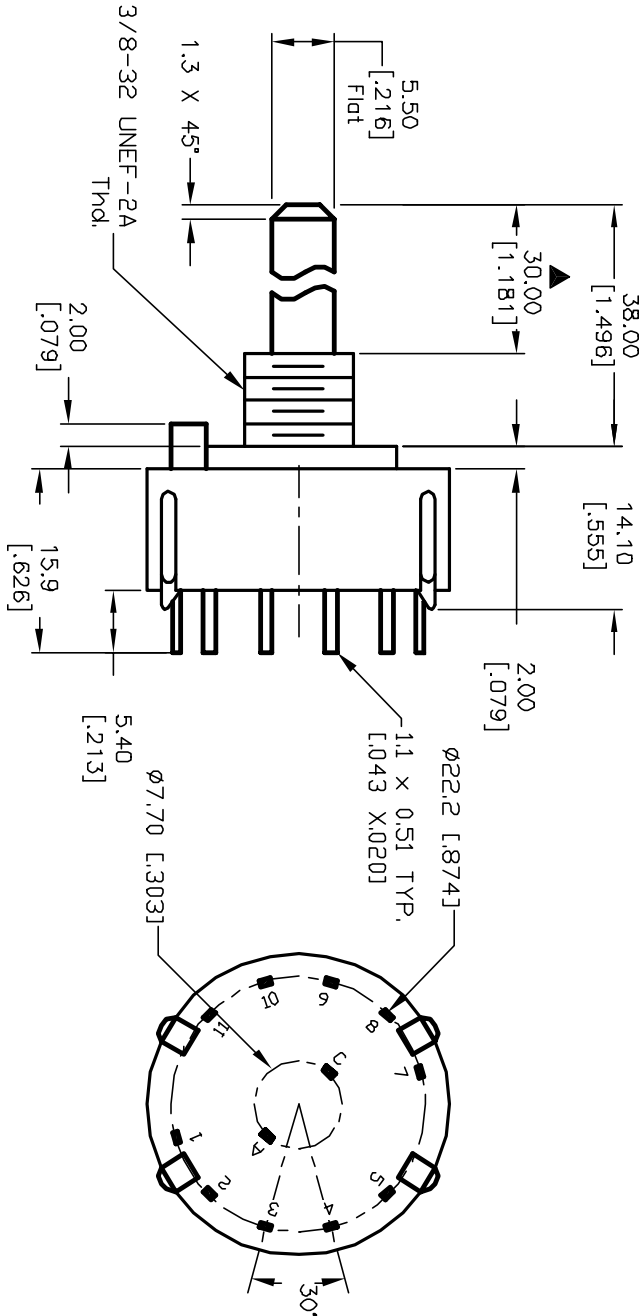
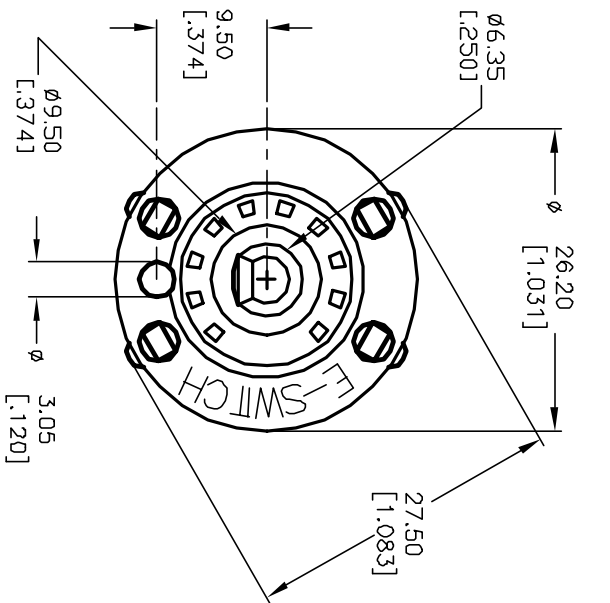


CONTACT CONFIGURATION

Timing: Non-Shorting (BBM)



RECOMMENDED P.C.B. LAYOUT



E-SWITCH®				TITLE			
B	12222	REVISED DESC PER CATALOG	7/5/02	CJB	SCALE	DATE	DR
A	11514	RELEASED FOR PRODUCTION	5/29/01	CJB	1.5:1	5/29/01	CJB
REV.	ECN No.	DESCRIPTION	DATE	CHKD			
THE INFORMATION CONTAINED IN THIS DOCUMENT IS PROPRIETARY TO E-SWITCH AND ITS NOT TO BE COPIED OR TRANSFERRED				KC-25-A-(30.0mm) 01-N-P-S			
				G510896			
				REV B			

# Mouser Electronics

Authorized Distributor

Click to View Pricing, Inventory, Delivery & Lifecycle Information:

[E-Switch:](#)

[KC25A30.001NPS](#)