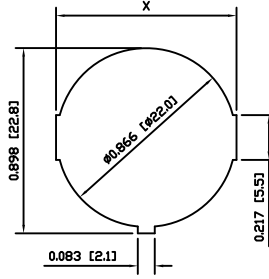
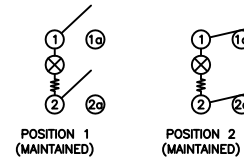


SUGGESTED PANEL CUTOUT



PANEL THICKNESS	X
0.030~0.049 [0.75~1.25]	0.874 [22.2]
0.049~0.079 [1.25~2.00]	0.882 [22.4]
0.079~0.118 [2.00~3.00]	0.890 [22.6]

SCHEMATIC



SPECIFICATIONS

FUNCTION:  
2P1T OFF-ON

RATINGS:  
ANSI/UL 1054 and CAN/CSA C22.2 No. 55 (E194579):  
15A 125VAC [UR, cUR]  
10A 250VAC [UR, cUR]  
1/3HP 125/250VAC [UR, cUR]

ILLUMINATION VOLTAGE:  
125V

CONTACT RESISTANCE:  
Initial: 35mΩ Max. at 50VAC

INSULATION RESISTANCE:  
100MΩ Min. at 500VDC

DIELECTRIC STRENGTH:  
1,500VAC For 1 Minute

ELECTRICAL LIFE:  
6,000 Cycles [UR, cUR]

TEMPERATURE:  
Operating: -20°C to 105°C [UR, cUR]

APPROVALS:



COLORS AND MARKINGS

BODY:  
Black

ACTUATOR:  
Transparent Blue

MARKING:  
I/O Horizontal (R)

MARKING COLOR:  
White

MATERIALS

BODY:  
Polyamide 6/6 (PA66), UL94 V-2

ACTUATOR:  
Polycarbonate (PC), UL94 V-2

LAMP CARRIER:  
Polyamide 6/6 (PA66), UL94 V-2

LAMP:  
Neon Bulb

SPRING:  
Steel

PLUNGER:  
Steel

CONTACTS:  
Silver Alloy Plated Copper

TERMINALS:  
Silver Plated Copper  
Silver Plated Brass

ACTUATOR	A	09/08/12	CAB
BODY	A	09/08/12	CAB
COLORS	A	09/10/15	CAB
MATERIALS	A	09/08/12	CAB
SPECIFICATIONS	A	09/08/12	CAB
REFERENCE	REV.	DATE	BY

THE INFORMATION CONTAINED IN THIS DOCUMENT IS PROPRIETARY TO E-SWITCH-LAMB INDUSTRIES AND IS NOT TO BE COPIED OR TRANSFERRED

B	CORRECTED BULB TYPE	PCRD0241	09/12/09	CAB
A	INITIAL RELEASE	PCRD0129	09/10/12	CAB
REV.	DESCRIPTION	PCR	DATE	DRAWN BY

DIMENSIONS	
INCHES [MILLIMETERS]	
GENERAL TOLERANCES	
±0.008 [±0.2] / ±1'	
SCALE	PROJECTION
DRAWING NOT TO SCALE	1:1

RRA12C102R-146

DRAWING NUMBER	DATE	REVISION
38-RRA12C102R146	DECEMBER 9, 2009	B

# Mouser Electronics

Authorized Distributor

Click to View Pricing, Inventory, Delivery & Lifecycle Information:

[E-Switch:](#)

[RRA12C102R-146](#)