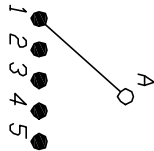
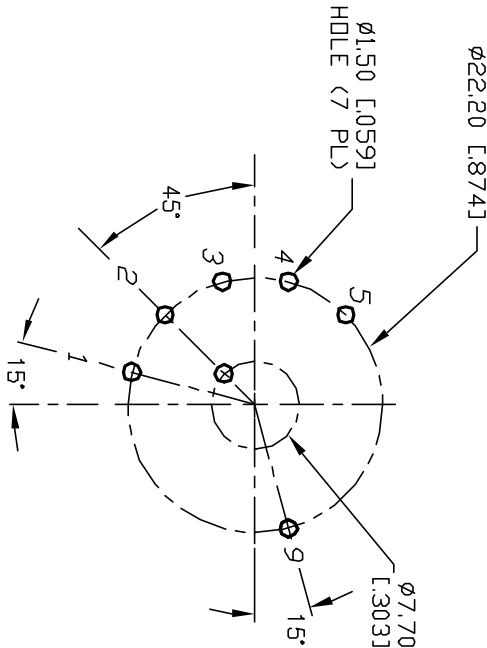


NOTES:

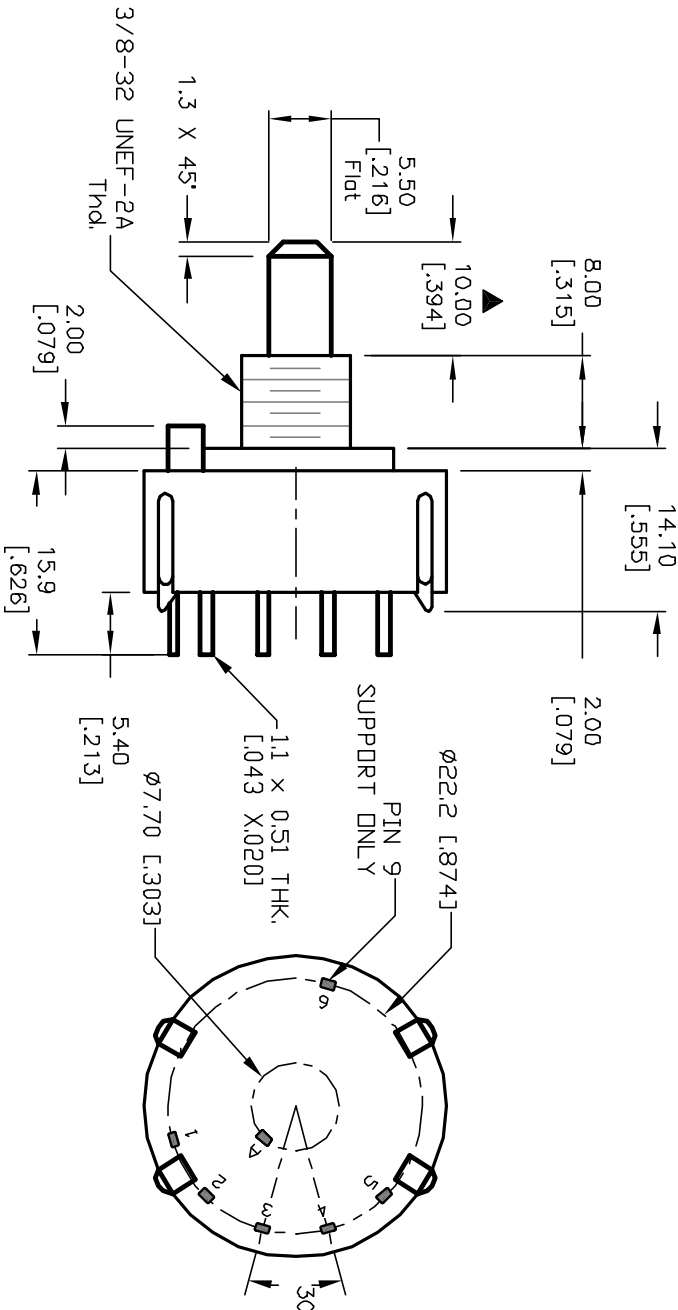
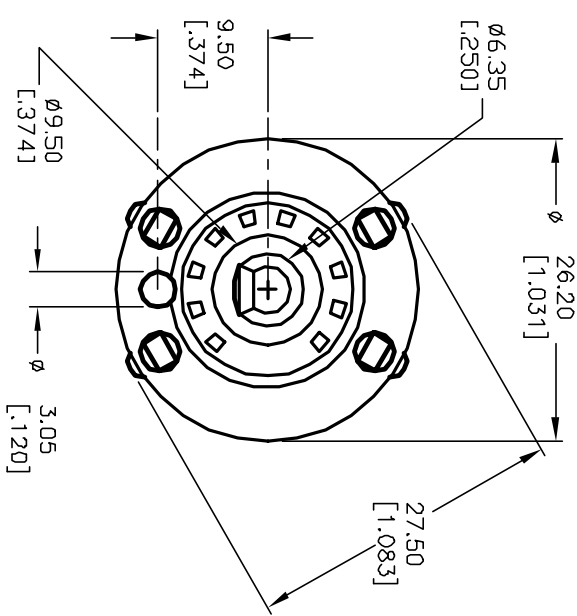
1. ALL DIMENSION IN MM [INCH]
2. GENERAL TOLERANCE: $X.X = \pm 0.4$
 $X.XX = \pm 0.25$
3. TERM. NOS. FOR REF. ONLY
4. CONTACT RATING SWITCHING: 150mA, 250V AC/DC
350mA, 110V AC/DC
5. CONTACT RATING (NON-SWITCHING) 5A
6. CONTACT MATERIAL: GOLD FLASH OVER COPPER ALLOY
7. OPERATING FORCE: 425 ± 100 CM/STANDARD
8. OPERATING TEMP.: -30° to 85°C
9. CIRCUIT SP.: 5 POSITIONS, 30° INDEX.
10. DIELECTRIC STRENGTH 1000V RMS min. @ SEA LEVEL
11. DESIGNATE MAJOR DIMENSIONS
12. LOCK NUT AND WASHER NOT SHOWN.



CONTACT CONFIGURATION
Timing: Non-Shorting (BBM)



RECOMMENDED P.C.B. LAYOUT



E-SWITCH®			
TITLE			
KC-15-A (10.0mm)-01-N-P-F			
THE INFORMATION CONTAINED IN THIS DOCUMENT IS PROPRIETARY TO E-SWITCH AND ITS NOT TO BE COPIED OR TRANSFERRED			
REV.	ECN No.	DESCRIPTION	DATE
C	12222	REVISED ACTUATOR LENGTH	7/3/02
B	12222	REV PART DECR./NEW CATALOG	6/12/02
A	11301	RELEASED FOR PRODUCTION	3/15/01
REV.	ECN No.	DESCRIPTION	DATE
SCALE	DATE	DR	DWG
1.5:1	3/15/01	CJB	G527536
REV	C		

Mouser Electronics

Authorized Distributor

Click to View Pricing, Inventory, Delivery & Lifecycle Information:

[E-Switch:](#)

[KC15A10.001NPF](#)