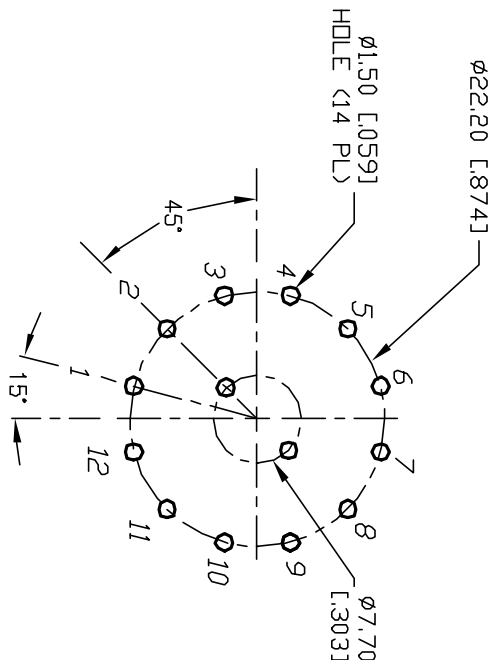
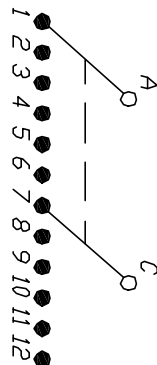
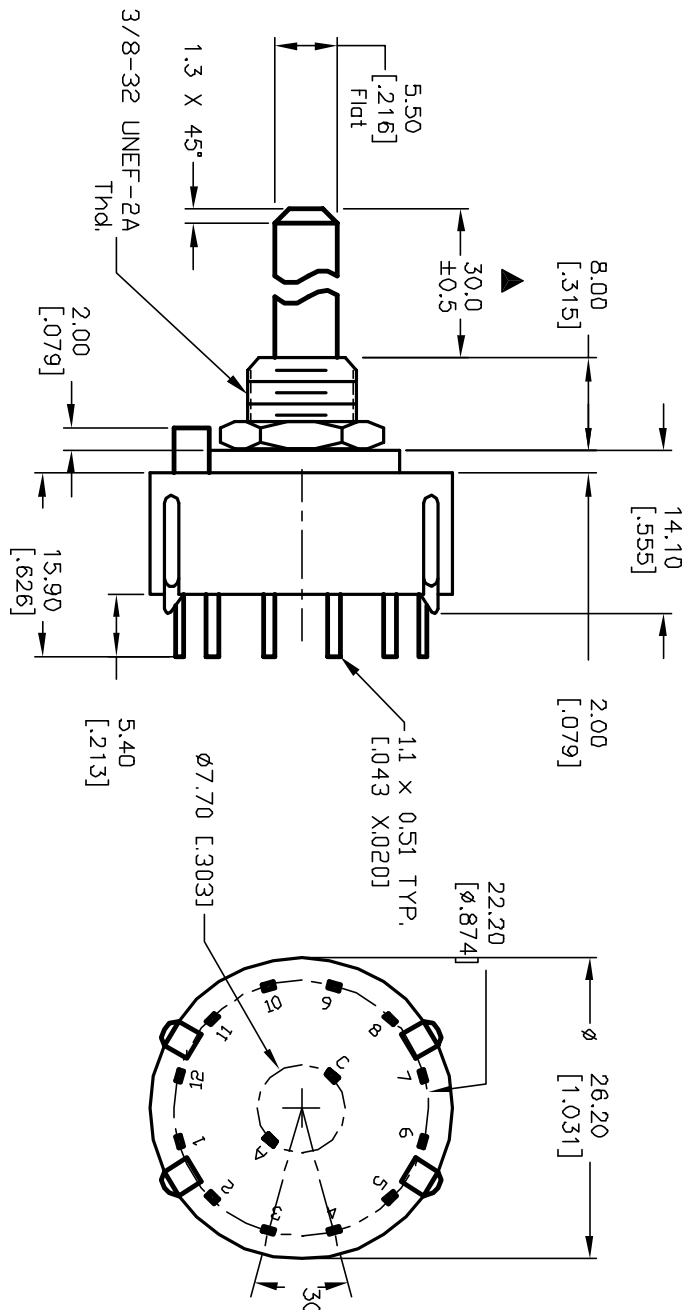
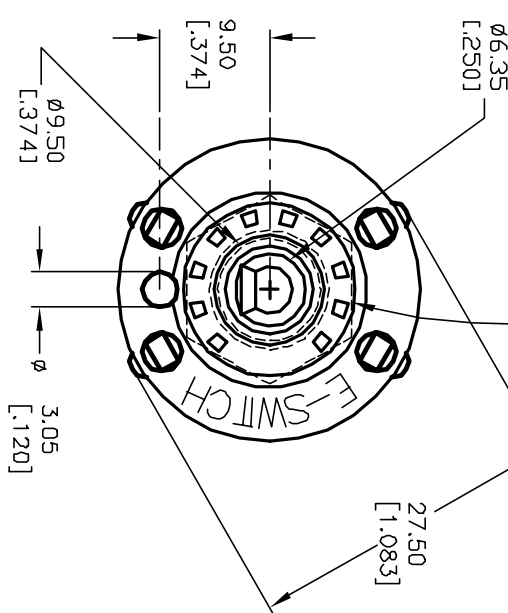


NOTES:

1. ALL DIMENSION IN MM [INCH]
2. GENERAL TOLERANCE: $X.X=\pm 0.4$
 $X.XX=\pm 0.25$
3. TERM. NOS. FOR REF. ONLY
4. CONTACT RATING SWITCHING: 150mA, 250V AC/DC
350mA, 110V AC/DC
5. OPERATING FORCE: 425 ± 100 CM/STANDARD
6. CONTACT MATERIAL: GOLD FLASH (AU FLASH OVER
1 MICRON AG OVER 2 Micron Ni)
7. OPERATING TEMP: -30° to 85° C
8. CIRCUIT DP: 6 POSITIONS, 30° INDEX.
9. DESIGNATE MAJOR DIMENSIONS
10. HARDWARE SUPPLIED ON SWITCH - SEE BELOW
STOPRING, LOCKWASHER, & HEXNUT



HARDWARE SUPPLIED
ON SWITCH



E-SWITCH®				TITLE			
B	12821	REV DESC/ NEW CATALOG	CJB	3/5/03	SCALE	DATE	DR
A	11276	RELEASED FOR PRODUCTION	CJB	3/2/01	1.5:1	3/2/01	CJB
REV.	ECN No.	DESCRIPTION	CHKD	DATE			DWG
THE INFORMATION CONTAINED IN THIS DOCUMENT IS PROPRIETARY TO E-SWITCH AND ITS NOT TO BE COPIED OR TRANSFERRED							REV
							B

Mouser Electronics

Authorized Distributor

Click to View Pricing, Inventory, Delivery & Lifecycle Information:

[E-Switch:](#)

[KC26A30.001NPF](#)