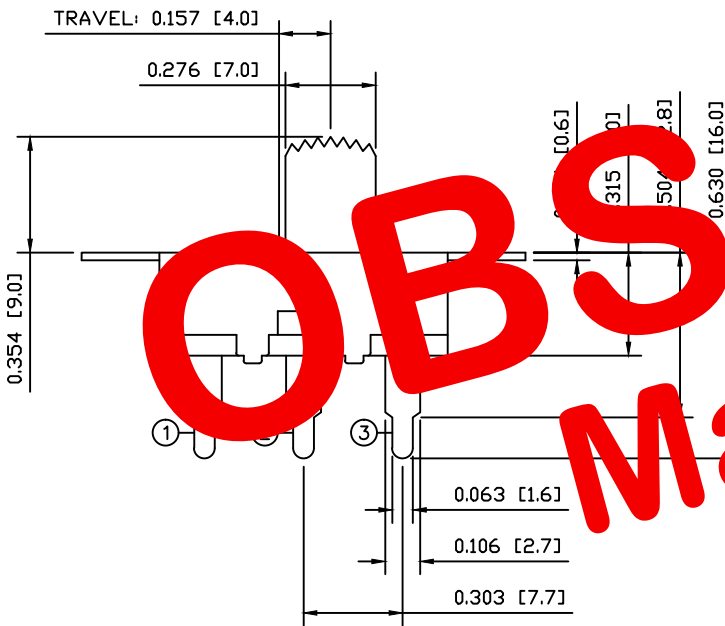
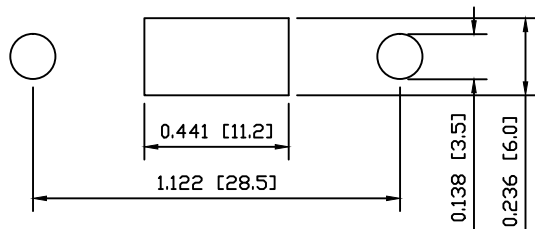


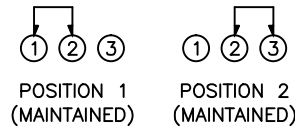
POSITION 1 POSITION 2



SUGGESTED PANEL CUTOUT



SCHEMATIC



COLORS

BODY:
Metallic

ACTUATOR:
Black

SPECIFICATIONS

FUNCTION:
1P2T ON-ON
Non-Shorting

RATINGS:
11A 125VAC
5.5A 250VAC

CONTACT RESISTANCE:
Initial: 30mΩ Max. at 50VDC

INSULATION RESISTANCE:
500MΩ Min. at 50VDC

DIELECTRIC STRENGTH:
1500VAC For 1 Minute

MECHANICAL LIFE:
10,000 Cycles

ELECTRICAL LIFE:
10,000 Cycles

TEMPERATURE:
-30° to 105°C

APPROVALS:



MATERIALS

UPPER BODY:
Steel

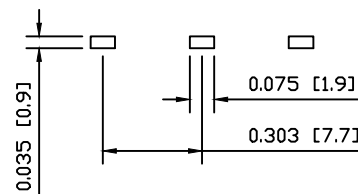
BASE:
Penolic Board, UL94 V-0

ACTUATOR:
Polyphenylene Oxide

CONTACTS
Silver

TERMINALS:
Silver Plated Copper

SUGGESTED PCB LAYOUT



UNLESS OTHERWISE SPECIFIED,
DIMENSIONS ARE IN INCHES [MILLIMETERS]
TOLERANCES ARE:
DEC .X±0.2 ANG ± 1°
.XXX±0.008 DRAWING NOT TO SCALE
DRAWN BY: STACEY CHRISTIANSON



LAST REVISION:
OCT. 1, 2008

DRAWING NUMBER: 03-LSU11-120001A9.dwg

LSU11-120001A9

Mouser Electronics

Authorized Distributor

Click to View Pricing, Inventory, Delivery & Lifecycle Information:

[E-Switch:](#)

[LSU11-120001A9](#)