
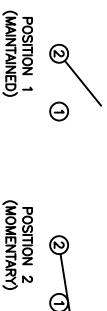
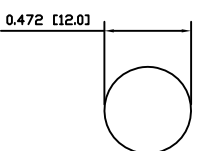
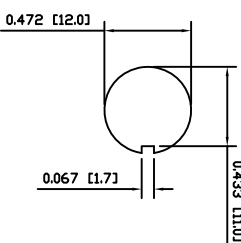
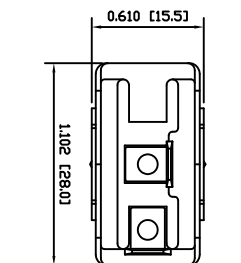


- | MATERIALS           |                          |
|---------------------|--------------------------|
| BODY:               | Phenolic, UL94 V-0       |
| ACTUATOR:           | Nickel Plated Brass      |
| BUSHING:            | Nickel Plated Brass      |
| HOUSING:            | Nickel Plated Steel      |
| HARDWARE:           | Nickel Plated Brass      |
| SPACER PLATE:       | Epoxy Board              |
| SPRING:             | Steel                    |
| ACTUATOR PLUNGER:   | Phenolic, UL94 V-0       |
| MOBILE CONTACT BAR: | Silver Plated Copper     |
| CENTER PIVOT:       | Silver Plated Copper     |
| CONTACTS:           | Silver Alloy Clad Copper |
| TERMINALS:          | Brass                    |

- SPECIFICATIONS**
- FUNCTION:**  
1P1T OFF—(ON)
- RATINGS:**  
ANSI/UL1054 and CAN/CSA C22.2 No.55 (E194579):  
20A 125VAC [cULus]  
15A 277VAC [cULus]  
1.5HP 125/277VAC [cULus]
- CONTACT RESISTANCE:**  
Initiate: 10mΩ Max.
- INSULATION RESISTANCE:**  
10MΩ Min.
- DIELECTRIC STRENGTH:**  
1,500VAC for 1 Minute
- OPERATING LIFE:**  
6,000 Cycles [cULus]
- TEMPERATURE:**  
Operating: 0°C to 85°C [cULus]
- APPROVALS:**
-  **RoHS**  
COMPLIANT



ACTUATOR	B	10/06/10	CAB
BODY	B	10/06/10	CAB
MATERIALS	B	10/06/09	CAB
SPECIFICATIONS	B	10/06/09	CAB
REFERENCE	REV.	DATE	BY

THE INFORMATION CONTAINED IN THIS DOCUMENT IS PROPRIETARY TO E-SWITCH AND IS NOT TO BE COPIED OR TRANSFERRED

B	CORRECTED PANEL CUTOFF, SPECIFICATIONS, AND MATERIALS
A	INITIAL RELEASE
REV.	DESCRIPTION

19133	10/06/10	CAB
PCR00051	09/06/05	CAB
PCR	DATE	DRAWN BY

INCHES [MILLIMETERS]	
GENERAL TOLERANCES	
±0.008 [±0.2] / ±1°	
SCALE	PROJECTION
DRAWING NOT TO SCALE	

DRAWING NUMBER		DATE	REVISION
34-ST144D00		JUNE 10, 2010	B



# Mouser Electronics

Authorized Distributor

Click to View Pricing, Inventory, Delivery & Lifecycle Information:

[E-Switch:](#)

[ST144D00](#)