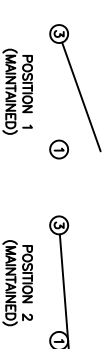
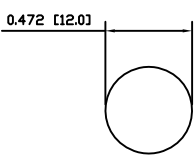
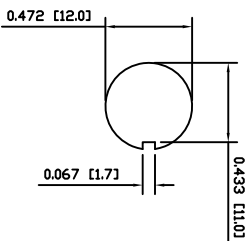
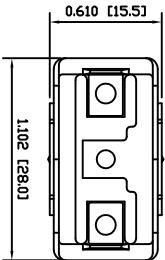


MATERIALS			SPECIFICATIONS		
BODY: Phenolic, UL94 V-0			FUNCTION: 1P1T OFF-ON		
ACTUATOR: Nickel Plated Brass			RATINGS: ANSI/UL1054 and CAN/CSA C22.2 No.55 (E194579): 20A 125VAC [cUlrus] 15A 277VAC [cUlrus] 2HP 125/277VAC [cUlrus]		
BUSHING: Nickel Plated Brass			CONTACT RESISTANCE: Initial: 10mΩ Max. 10MΩ Min.		
HOUSING: Nickel Plated Steel			INSULATION RESISTANCE: 10MΩ Min.		
HARDWARE: Nickel Plated Brass			DIELECTRIC STRENGTH: 1,500VAC for 1 Minute		
SPACER PLATE: Epoxy Board			OPERATING LIFE: 6,000 Cycles [cUlrus]		
SPRING: Steel			TEMPERATURE: Operating: 0°C to 85°C [cUlrus]		
ACTUATOR PLUNGER: Phenolic, UL94 V-0			APPROVALS: cUlrus ROHS COMPLIANT		
MOBILE CONTACT BAR: Silver Plated Copper					
CENTER PIVOT: Silver Plated Copper					
CONTACTS: Silver Alloy Clad Copper					
TERMINALS: Brass					



ACTUATOR	B	10/06/10	CAB
BODY	B	10/06/10	CAB
MATERIALS	B	10/06/09	CAB
SPECIFICATIONS	B	10/06/09	CAB
REFERENCE	REV.	DATE	BY

THE INFORMATION CONTAINED IN THIS DOCUMENT IS PROPRIETARY TO E-SWITCH AND IS NOT TO BE COPIED OR TRANSMITTED

B	CORRECTED PANEL CUTOUT, SPECIFICATIONS, AND MATERIALS	19133	10/06/10	CAB
A	INITIAL RELEASE	POB00001	09/06/05	CAB
REV.	DESCRIPTION	PCR	DATE	DRAWN BY

DIMENSIONS	
INCHES [MILLIMETERS]	
GENERAL TOLERANCES	±0.008 [±0.2] / ±1°
SCALE	DRAWING NOT TO SCALE

E-SWITCH®		LAMB INDUSTRIES	
TITLE		ST141D00	
DRAWING NUMBER		34-ST141D00	
DATE		JUNE 10, 2010	
REVISION		B	

# Mouser Electronics

Authorized Distributor

Click to View Pricing, Inventory, Delivery & Lifecycle Information:

[E-Switch:](#)

[ST141D00](#)