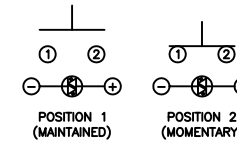


## SCHEMATIC



## SPECIFICATIONS

FUNCTION:  
1P1T OFF-(ON)

RATING:  
2A 48VDC

ILLUMINATION VOLTAGE:  
2.8V 20mA

CONTACT RESISTANCE:  
Initial: 50mΩ Max. at 1A 12VDC

INSULATION RESISTANCE:  
1,000MΩ Min. at 500VDC

DIELECTRIC STRENGTH:  
2,000VAC Min. for 1 Minute

ELECTRICAL LIFE:  
200,000 Cycles

MECHANICAL LIFE:  
1,000,000 Cycles

INGRESS PROTECTION:  
IP65

TEMPERATURE:  
Operating: -20°C to 70°C

APPROVALS:  
**RoHS**  
COMPLIANT

## COLORS AND FINISH

BODY:  
Nickel  
Plated Finish

ACTUATOR:  
Nickel  
Plated Finish

ILLUMINATION:  
Blue (Forward)  
Blue (Reverse)

## MATERIALS

BUSHING:  
Stainless Steel (304)

BASE:  
Polybutylene Terephthalate (PBT), UL94 V-2

ACTUATOR:  
Stainless Steel (304)  
Polycarbonate (PC)

HARDWARE:  
Nickel Plated Brass (H59)

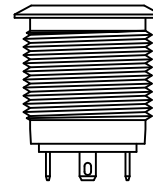
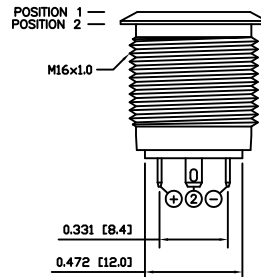
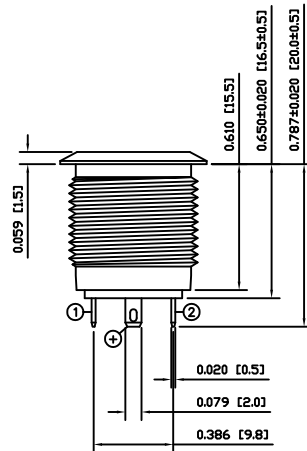
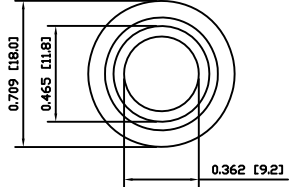
SEALING:  
Silicone Rubber

SPRING:  
Stainless Steel (304)

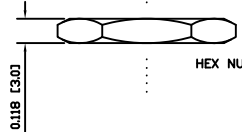
CONTACTS:  
Silver Alloy Plated Copper (AgCdO)

TERMINALS:  
Brass (H62)

O-RING:  
Silicone Rubber

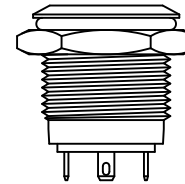


O-RING



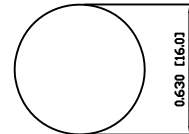
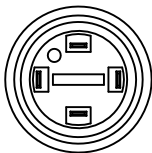
HEX NUT

EXPLODED VIEW



ASSEMBLED VIEW

## SUGGESTED PANEL CUTOUT



MAXIMUM PANEL THICKNESS: 0.315 [8.0mm]

BODY	A	09/08/03	CAB
COLORS	A	09/08/12	CAB
MATERIALS	B	09/10/26	CAB
SPECIFICATIONS	A	09/08/03	CAB
REFERENCE	REV.	DATE	BY

THE INFORMATION CONTAINED IN THIS DOCUMENT IS PROPRIETARY TO E-SWITCH AND IS NOT TO BE COPIED OR TRANSFERRED

B	CORRECTED MATERIALS	PCRD0167	09/10/28	CAB
A	INITIAL RELEASE	PCRD0051	09/08/05	CAB
REV.	DESCRIPTION	PCR	DATE	DRAWN BY

DIMENSIONS	INCHES [MILLIMETERS]
GENERAL TOLERANCES	±0.008 [±0.2] / ±1°
SCALE	DRAWING NOT TO SCALE

PV6F240SS-341	
DRAWING NUMBER	52-PV6F240SS341
DATE	OCTOBER 28, 2009
REVISION	B

# Mouser Electronics

Authorized Distributor

Click to View Pricing, Inventory, Delivery & Lifecycle Information:

[E-Switch:](#)

[PV6F240SS-341](#)