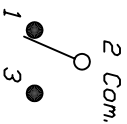


RECOMMENDED P.C.B. LAYOUT

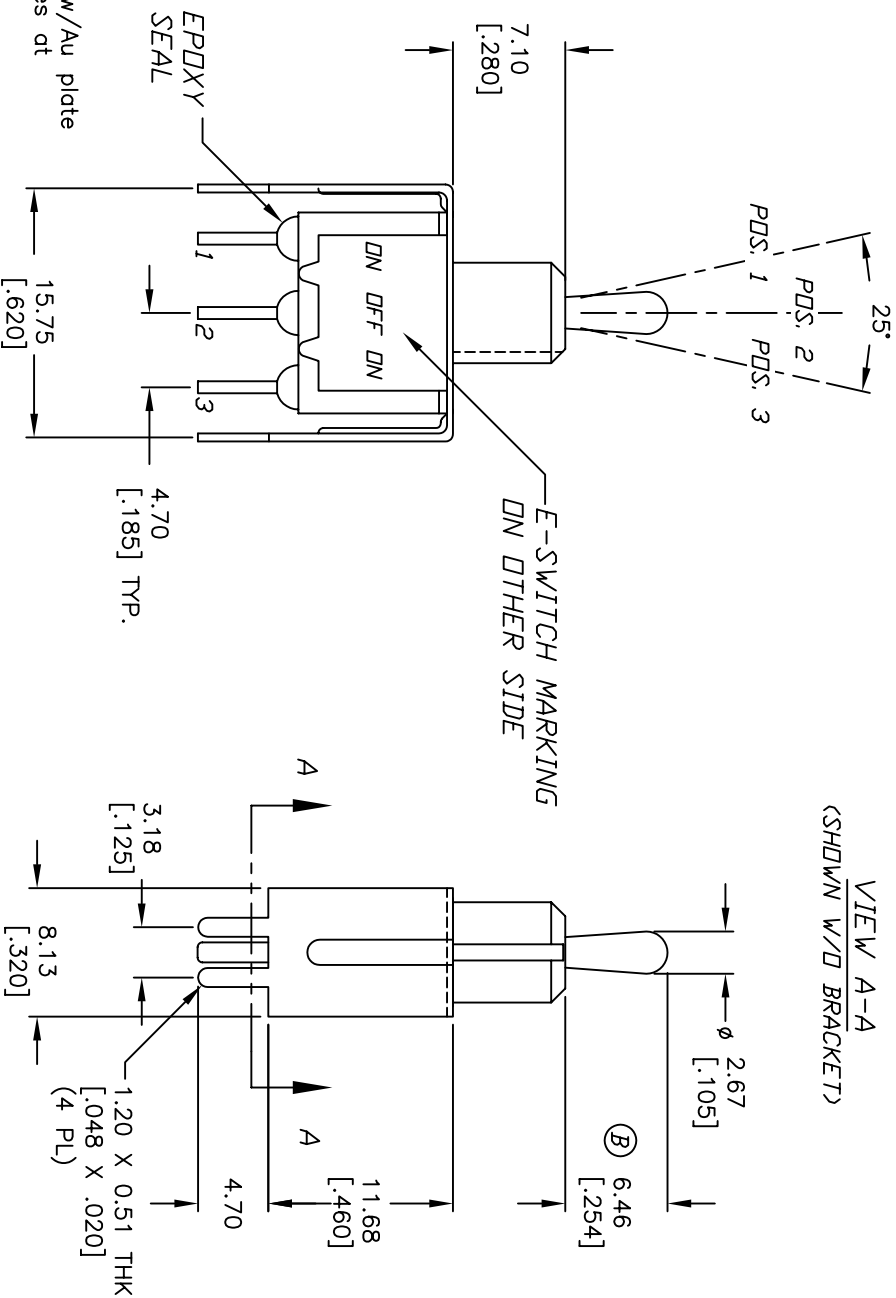


CIRCUIT: SPDT

SWITCH FUNCTION		
PDS. 1	PDS. 2	PDS. 3
DN	DN	DN
DN	DN	DN
DN	DN	DN

NOTES:

1. ALL DIMENSIONS IN MM [INCH]
2. GENERAL TOLERANCE: X.X=±0.4
X.XX=±0.25
3. TERM. NOS. FOR REF. ONLY
4. RATING: 5A @120VAC OR 28VDC
2A @250VAC w/Resistive loads
5. FIXED TERM. & MOVING CONTACT: Copper alloy w/Au plate
6. ELECTRICAL LIFE: 50,000 make-and-break cycles at full load.
7. INSULATION RESISTANCE: 1000M ohm min.
8. DIELECTRIC STRENGTH: 1000V RMS min. @sea level.
9. OPERATING TEMP.: -30°C to 85°C
10. 2002/95/EC (ROHS) COMPLIANT



VIEW A-A
(SHOWN W/D BRACKET)

E-SWITCH®

C	15899	EDIT MOUNTING DIMENSIONS	3/27/06	PH
B	T11547	REVISED ACTUATOR	6/29/01	CJB
REV.	ECN NO.	DESCRIPTION	DATE	CHKD

TITLE				
100 SP-3 T2 B4 VS2 Q E				
SCALE	DATE	DR	DWG	REV
2:1	5/14/01	CJB	T110236	C

Mouser Electronics

Authorized Distributor

Click to View Pricing, Inventory, Delivery & Lifecycle Information:

E-Switch:

[100SP3T2B4VS2QE](#)