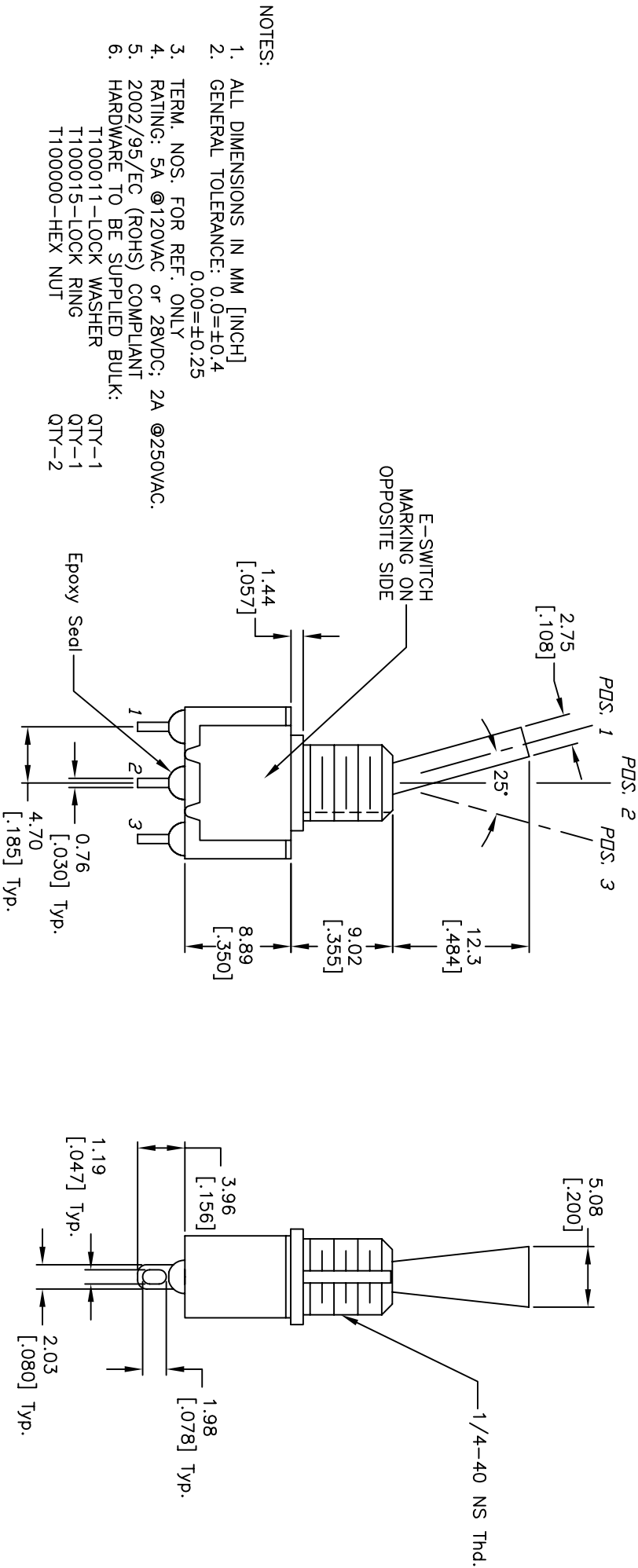
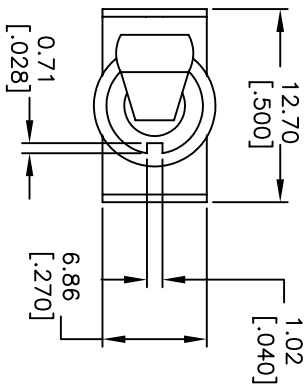


CIRCUIT: SPDT
CONTACT CONFIGURATION

SWITCH FUNCTION			
PDS. 1	PDS. 2	PDS. 3	
DN	NONE	DN	
2-3	N/A	2-1	



NOTES:

1. ALL DIMENSIONS IN MM [INCH]
2. GENERAL TOLERANCE: 0.0=±0.4
0.00=±0.25
3. TERM. NOS. FOR REF. ONLY
4. RATING: 5A @120VAC or 28VDC; 2A @250VAC.
5. 2002/95/EC (ROHS) COMPLIANT
6. HARDWARE TO BE SUPPLIED BULK:
T100011-LOCK WASHER QTY-1
T100015-LOCK RING QTY-1
T100000-HEX NUT QTY-2

D	16058	EDIT SWITCH FUNCTION TABLE	5/30/06	CT	<div><i>E-SWITCH®</i></div> <div>100 SP-1 T6 B11 M1 Q EH</div>				
C	15876	EDIT ACTUATOR HEIGHT	3/17/06	PH					
B	15537	DIM FROM 1.02 TO 1.44	11/16/05	PH					
A	15503	RELEASED	11/7/05	PH					
REV.	ECN No.	DESCRIPTION	DATE	CHKD					
THE INFORMATION CONTAINED IN THIS DOCUMENT IS PROPRIETARY TO E-SWITCH AND IS NOT TO BE COPIED OR TRANSFERRED					SCALE	DATE	DR	DWG	REV
					2:1	11/7/05	PH	ST111021	D

Mouser Electronics

Authorized Distributor

Click to View Pricing, Inventory, Delivery & Lifecycle Information:

[E-Switch:](#)

[100SP1T6B11M1QEH](#)