


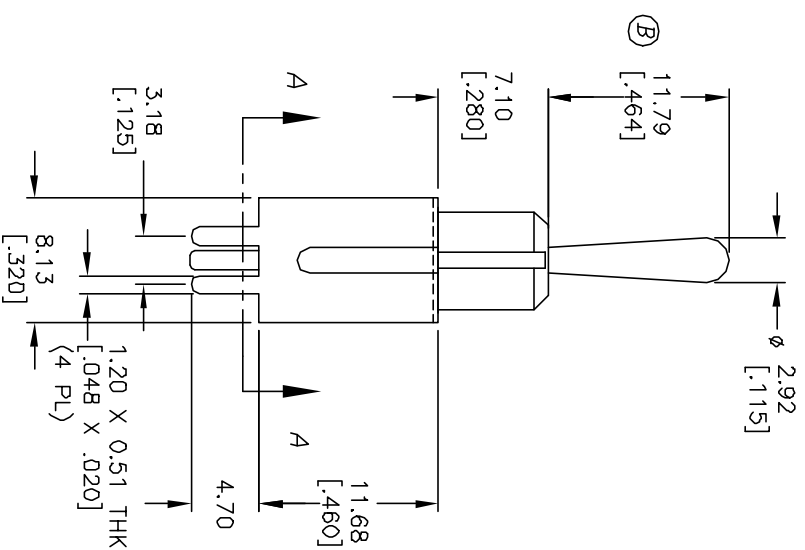
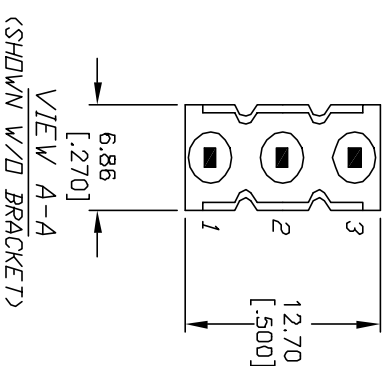


SWITCH FUNCTION			
PDS. 1	PDS. 2	PDS. 3	
			
ON	OFF	ON	
2-3	OPEN	2-1	

1. ALL DIMENSIONS IN MM [INCH]
2. GENERAL TOLERANCE: $X.X=\pm 0.4$
 $X.XX=\pm 0.25$
3. TERM. NOS. FOR REF. ONLY
4. RATING: 0.4 (VA) Max. @20V AC or DC
5. FIXED TERM. & MOVING CONTACT: Copper alloy w/Gold plate
Over Nickel Plate.
6. ELECTRICAL LIFE: 50,000 make-and-break cycles at
full load.
7. INSULATION RESISTANCE: 1000M ohm min.
8. DIELECTRIC STRENGTH: 1000V RMS min. @sea level.
9. OPERATING TEMP.: -30°C to 85°C



TITL

100 SP-3 T1 B4 VS2 R E

					TITLE
B	11547	REVISED ACTUATOR	6/29/01	CJB	100 SP-3 T1 B4 VS2 R E
REV.	ECN No.	DESCRIPTION	DATE	CHKD	
THE INFORMATION CONTAINED IN THIS DOCUMENT IS PROPRIETARY TO E-SWITCH AND IS NOT TO BE COPIED OR TRANSFERRED					SCALE 2:1
		DATE	DR	DWG	REV
		5/14/01	CJB	T113041	B

Mouser Electronics

Authorized Distributor

Click to View Pricing, Inventory, Delivery & Lifecycle Information:

[E-Switch:](#)

[100SP3T1B4VS2RE](#)