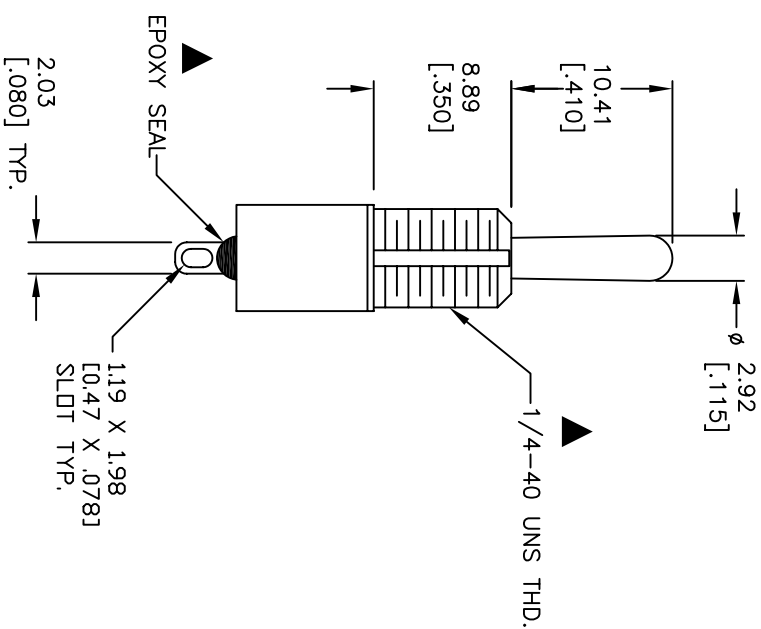
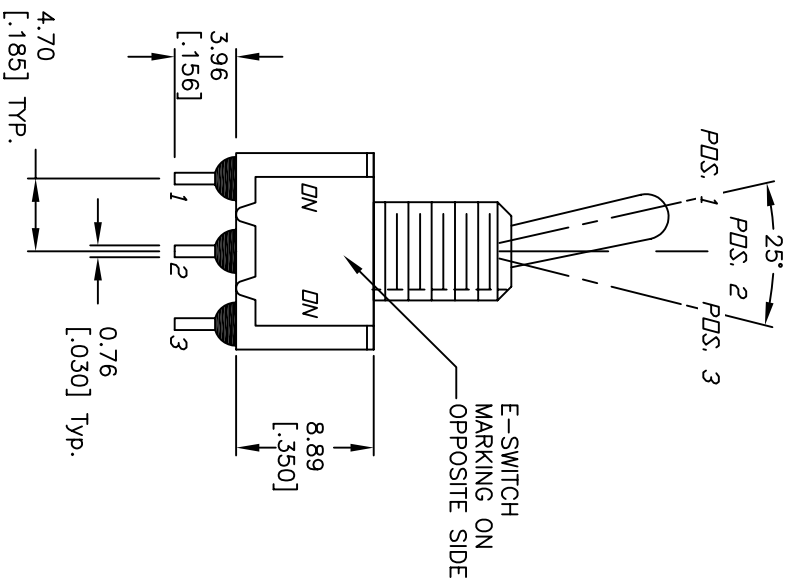
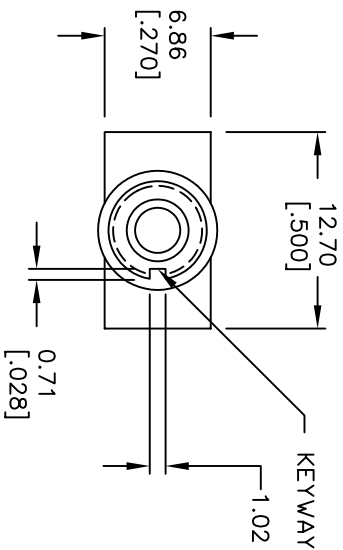


CIRCUIT: SPDT

| SWITCH FUNCTION | | |
|-----------------|--------|--------|
| PQS. 1 | PQS. 2 | PQS. 3 |
| | | |
| DN | NDNE | DN |
| 2-3 | OPEN | 2-1 |

NOTES:

1. ALL DIMENSIONS IN MM [INCH]
2. GENERAL TOLERANCE: X.X=±0.4
X.XX=±0.25
3. TERM. NOS. FOR REF. ONLY
4. RATING: 0.4VA @20V AC or DC
5. FIXED TERMINAL/MOVING CONTACT:
Copper Alloy /w Gold plate over
Nickel plate.
6. ELECTRICAL LIFE: 50,000 make-and-break
cycles at full load.
7. INSULATION RESISTANCE: 1,000M ohm min.
8. DIELECTRIC STRENGTH: 1000V RMS @sea level
9. OPERATING TEMP.: -30°C to 85°C
10. 2002/95/EC (ROHS) COMPLIANT
11. HARDWARE TO BE SUPPLIED BULK:
T100011-LOCK WASHER QTY-1
T100015-LOCK RING QTY-1
T100000-HEX NUT QTY-2



E-SWITCH®

| REV. | ECN No. | DESCRIPTION | DATE | CHKD |
|------|---------|-------------------------|---------|------|
| A | 15511 | RELEASED FOR PRODUCTION | 11/8/05 | PH |

| TITLE | | | | |
|---|---------|----|----------|-----|
| 100 SP-1 T1 B1 M1 R E H (GOLD CONTACTS) | | | | |
| SCALE | DATE | DR | DWG | REV |
| 2:1 | 11/8/05 | PH | ST111032 | A |

THE INFORMATION CONTAINED IN THIS DOCUMENT
IS PROPRIETARY TO E-SWITCH AND IS
NOT TO BE COPIED OR TRANSFERRED

Mouser Electronics

Authorized Distributor

Click to View Pricing, Inventory, Delivery & Lifecycle Information:

E-Switch:

[100SP1T1B1M1REH](#)