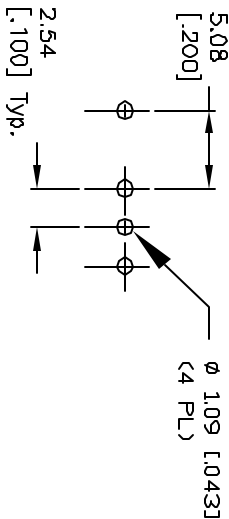


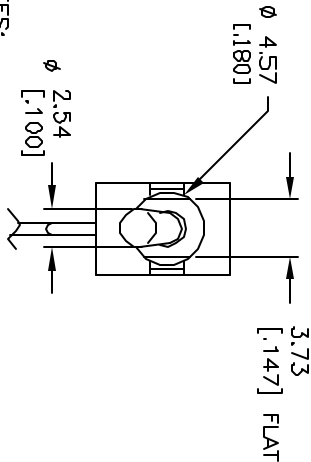
CIRCUIT: SPDT

CONTACT CONFIGURATION

SWITCH FUNCTION			
POS. 1	POS. 2	POS. 3	
DN	NONE	DN	
2-3	OPEN	2-1	



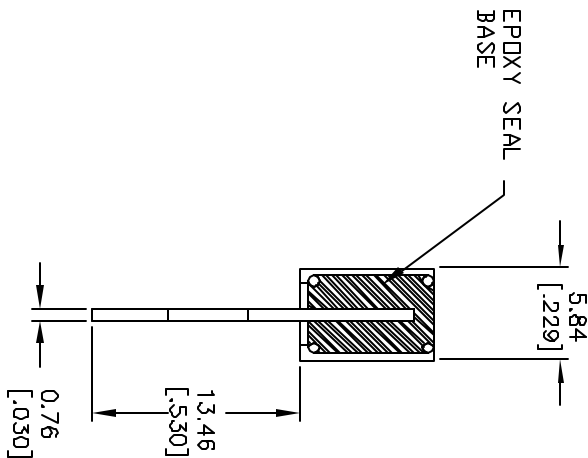
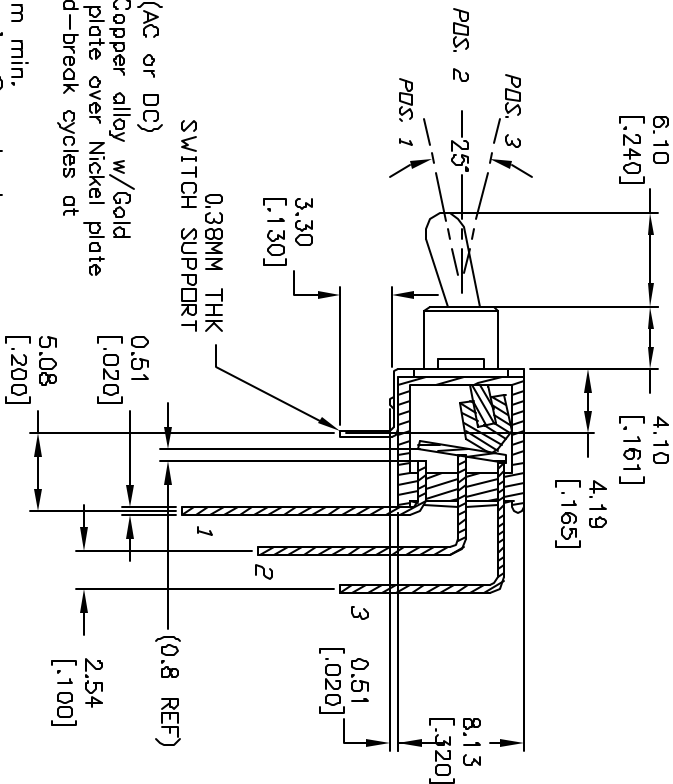
RECOMMENDED P.C.B. LAYOUT



NOTES:

1. ALL DIMENSIONS IN MM [INCH]
2. GENERAL TOLERANCE:  $X.X = \pm 0.4$   
 $X.XX = \pm 0.25$
3. TERM. NOS. FOR REF. ONLY
4. RATING: 0.4(VA) max. 20V max. (AC or DC)
5. FIXED TERM. & MOVING CONTACT: Copper alloy w/Gold plate over Nickel plate
6. ELECTRICAL LIFE: 50,000 make-and-break cycles at full load.
7. INSULATION RESISTANCE: 1000M ohm min.
8. DIELECTRIC STRENGTH: 1000V RMS min. 9990 level.
9. OPERATING TEMP.: -30°C to 85°C
- 10: ALL MUST BE BLACK ANODIZED:

TOGGLE, BUSHING, & HARDWARE



E-SWITCH®			
TITLE		2004 W/MSP-1 T2 A1 M7 R E	
TOGGLE, HARDWARE, BUSHING BLACK ANODIZED			
REV.	ECN NO.	DATE	REV
B	12514	10/28/02	RC
A	12484	10/14/02	CJB
DESCRIPTION		DATE	CHKD
Change view to cross section		10/28/02	RC
RELEASED FOR PRODUCTION		10/14/02	CJB
THE INFORMATION CONTAINED IN THIS DOCUMENT IS PROPRIETARY TO E-SWITCH AND IS NOT TO BE COPIED OR TRANSFERRED		DATE	REV
SCALE		DATE	REV
2:1		10/14/02	B

# Mouser Electronics

Authorized Distributor

Click to View Pricing, Inventory, Delivery & Lifecycle Information:

E-Switch:

[200AWMSP1T2A1M7REANODIZED](#)