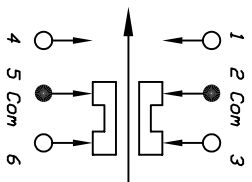
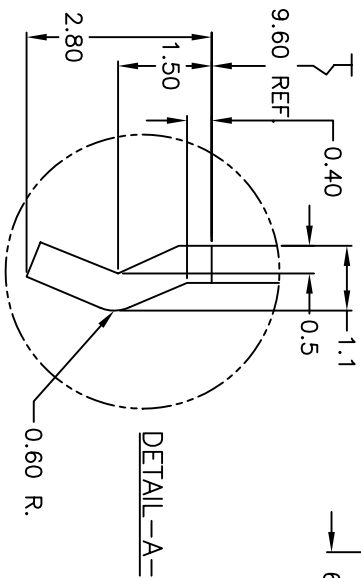
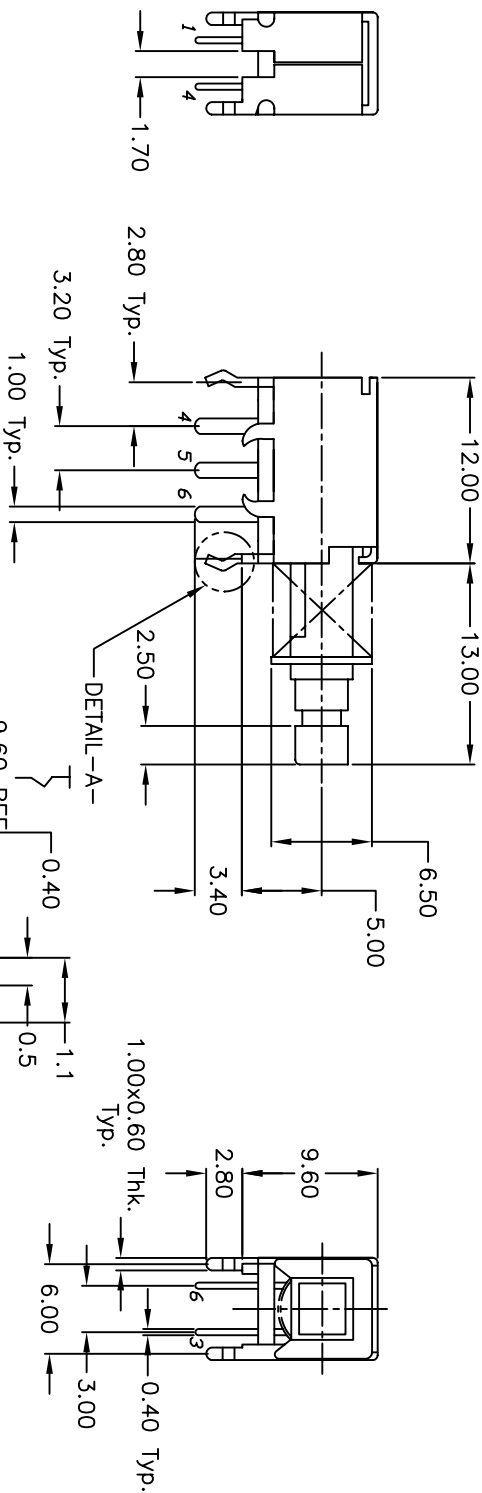


RECOMMEND P.C.B. LAYOUT



CIRCUIT: DPDT

CONTACT CONFIGURATION

NOTES:

- 1. ALL DIMENSIONS IN MM
- 2. GENERAL TOLERANCE: 0.0=±0.4
0.00=±0.25
- 3. TERM. NOS. FOR REF. ONLY
- 4. RATING: DC 30V, 0.3A
- 5. OPERATING FORCE: 330±150gf
- 6. TRAVEL: FULL 3.5mm; LOCK 2.5mm

B	15583	ADD DETAIL A, EDIT DESCR.	12/6/05	PH
A	10209	RELEASED FOR PRODUCTION		
REV.	ECN No.	DESCRIPTION	DATE	CHKD

THE INFORMATION CONTAINED IN THIS DOCUMENT
IS PROPRIETARY TO E-SWITCH AND IS
NOT TO BE COPIED OR TRANSFERRED

TITLE				
LC 2255 EE NP (W/CRIMP)				
E-SWITCH®				
SCALE	DATE	DR	DWG	REV
2:1	5/6/99	MM	P070181	B

Mouser Electronics

Authorized Distributor

Click to View Pricing, Inventory, Delivery & Lifecycle Information:

[E-Switch:](#)

[LC2255EENP\(W/CRIMP\)](#)