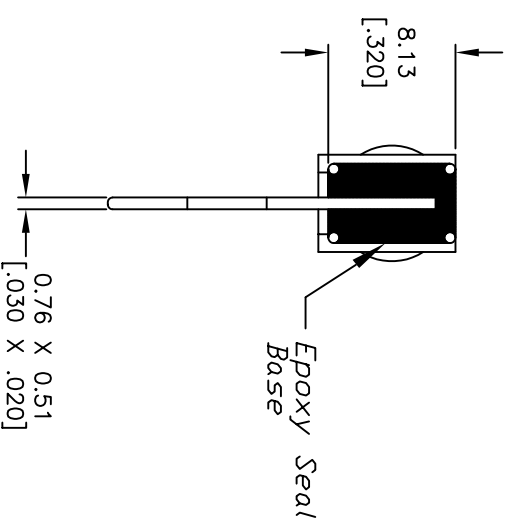
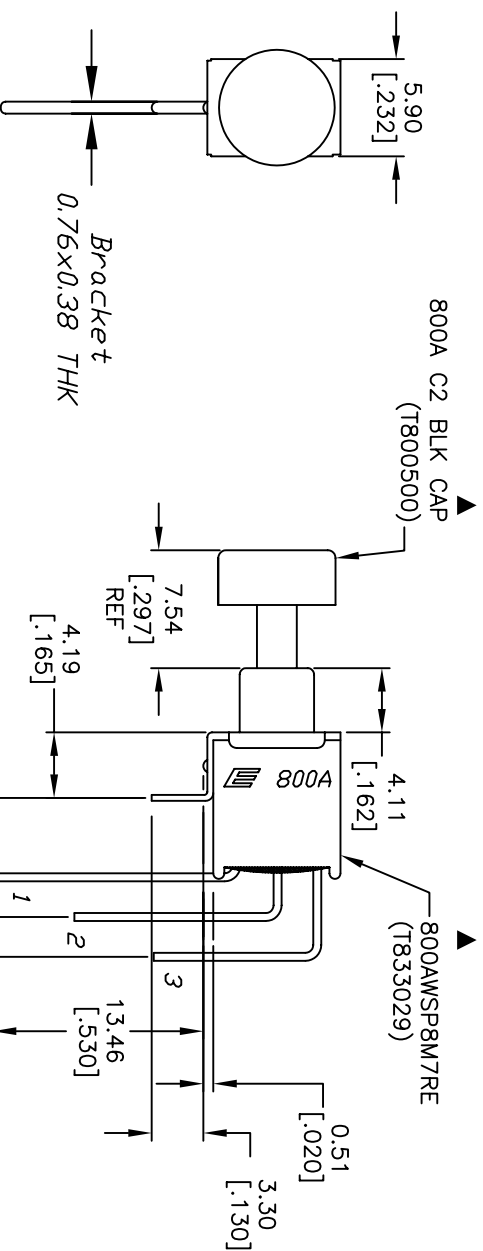
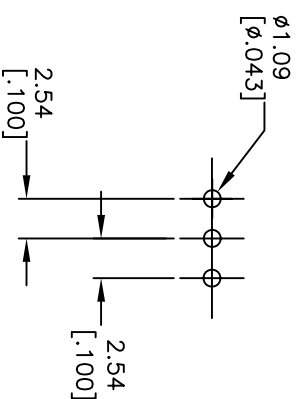


CIRCUIT: SPDT

CONTACT CONFIGURATION

\overline{DN}	$\langle \overline{DN} \rangle$
2-1	2-3

$\langle \rangle = \text{Momentary}$



NOTES:

1. ALL DIMENSIONS IN MM [INCH]
2. GENERAL TOLERANCE: $X.X = \pm 0.4$
 $X.XX = \pm 0.25$
3. TERM. NOS. FOR REF. ONLY
4. RATING: 0.4VA @ 20V AC or DC max.
5. FIXED TERM, MOVING CONTACT: COPPER ALLOY with
GOLD Plate over Nickel plate
6. ELECTRICAL LIFE: 50,000 make-and-break cycle
at full load.
7. DIELECTRIC STRENGTH: 1,000 V RMS @sed level.
8. OPERATING TEMP.: -30°C to 85°C
9. ▲ DENOTES CRITICAL PARAMETER
10. 2002/95/EC (ROHS) COMPLIANT

<div><div></div><div>E-SWITCH®</div></div>			
TITLE			
800AWS P8M7REC2BLK			
SCALE	DATE	DR	DWG
2:1	11/3/03	AR	XT0121P
REV			
D			

Mouser Electronics

Authorized Distributor

Click to View Pricing, Inventory, Delivery & Lifecycle Information:

[E-Switch:](#)

[800AWSP8M7REC2BLK](#)