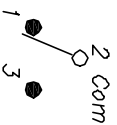


RECOMMENDED P.C.B. LAYOUT

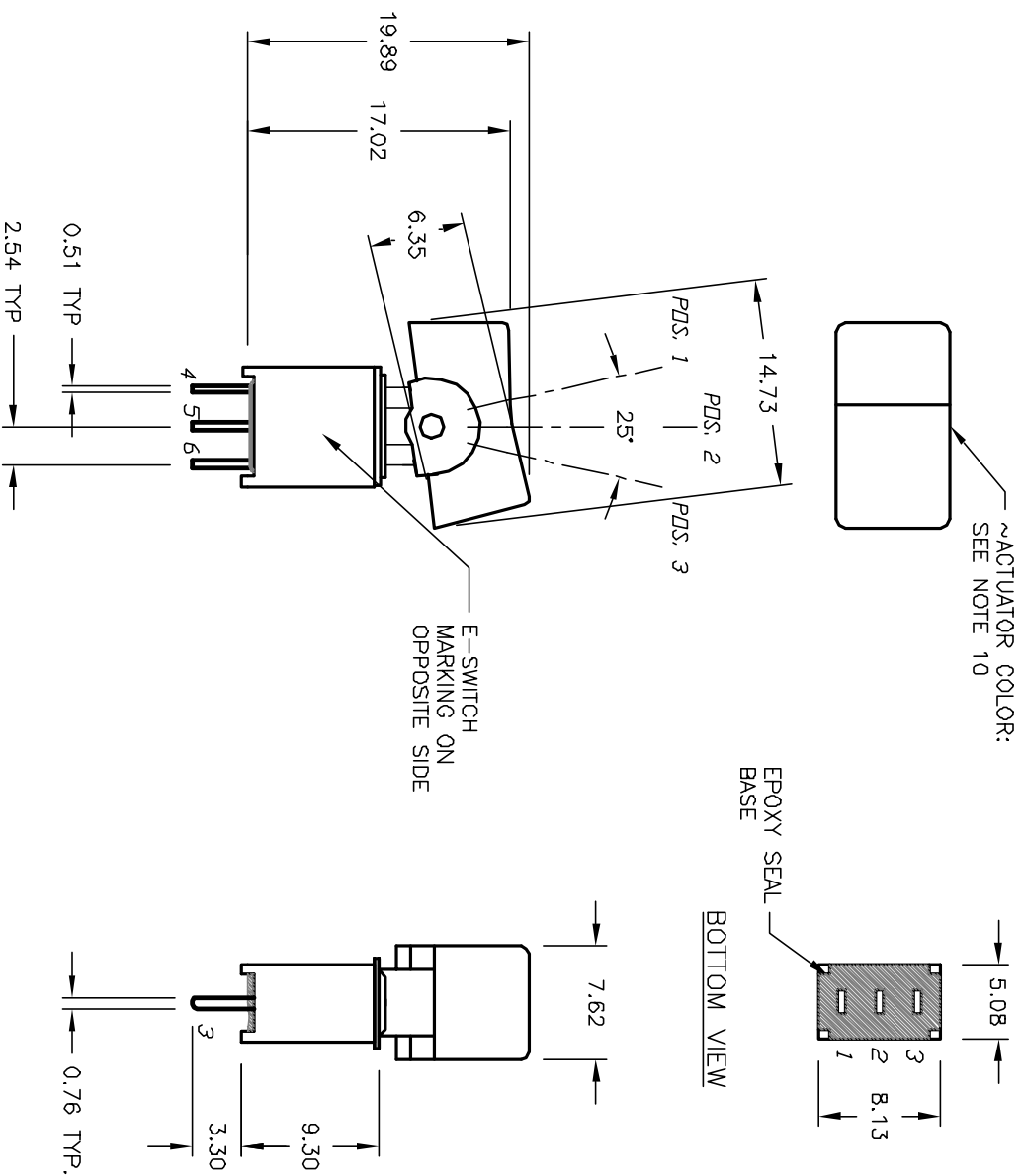


CIRCUIT: SPDT
CONTACT CONFIGURATION

SWITCH FUNCTION			
	PDS. 1	PDS. 2	PDS. 3
POS.	DN	OFF	DN
2-3		OPEN	2-1

NOTES:

1. ALL DIMENSIONS IN MM
2. GENERAL TOLERANCE: X,X=±0.4
X,XX=±0.25
3. TERM. NDS. FOR REF. ONLY
4. RATING: 0.4V @20V (AC OR DC) max.
5. FIXED TERM/MOVING CONTACT
COPPER ALLOY W/Gold plate over Nickel plate
ELECTRICAL LIFE: 30,000 MAKE-AND-BREAK
CYCLES AT FULL LOAD.
7. INSULATION RESISTANCE: 1000M OHM TYPICAL
8. DIELECTRIC STRENGTH: 1,000 V RMS @SEA LEVEL
9. OPERATING TEMP.: -30°C to +85°C
10. ACTUATOR: NYLON BLACK (UL94-HB)



10. ACTUATOR: NYLON BLACK (UL94-HB)				
A	12207	RELEASED FOR PRODUCTION	2/27/03	CB
REV.	ECN NO.	DESCRIPTION	DATE	CHKD
THE INFORMATION CONTAINED IN THIS DOCUMENT IS PROPRIETARY TO E-SWITCH AND IS NOT TO BE COPIED OR TRANSFERRED				
TITLE				
400A W/MSP-1 R1 (BLK) M2 RE (GOLD CONTACTS)				
SCALE	DATE	DR	DWG	REV
2:1	2/27/03	CB	T403011	A

Mouser Electronics

Authorized Distributor

Click to View Pricing, Inventory, Delivery & Lifecycle Information:

[E-Switch:](#)

[400AWMSP1R1BLKM2RE](#)