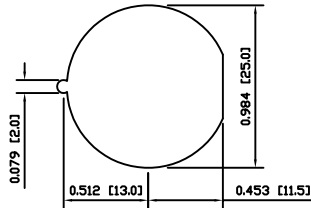
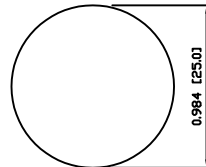


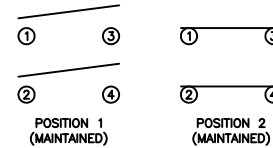
SUGGESTED PANEL CUTOUT



ALTERNATE PANEL CUTOUT



SCHEMATIC



SPECIFICATIONS

FUNCTION:
2P1T OFF-ON

RATINGS:
ANSI/UL 1054 and CAN/CSA C22.2 No.55 (E194579):
16A 125VAC [UR, cUR]
1/2HP 125VAC [UR, cUR]
3/4HP 250VAC [UR, cUR]

EN 61058-1:2002:
16(6)A 250V~ 1E4 T125/55 [ENEC14]
10(4)A 250V~ 5E4 T125/55 [ENEC14]

CONTACT RESISTANCE:
Initial: 35mΩ Max. at 50VAC

INSULATION RESISTANCE:
100MΩ Min. at 500VDC

DIELECTRIC STRENGTH:
1,500VAC For 1 Minute

ELECTRICAL LIFE:
6,000 Cycles [UR, cUR]
10,000 Cycles [ENEC14]
50,000 Cycles [ENEC14]

TEMPERATURE:
Operating: -20°C to 105°C [UR, cUR]
Operating: -20°C to 125°C [ENEC14]

APPROVALS:



COLORS AND MARKINGS

BODY:
Black

ACTUATOR:
Grey
Glossy Finish

MARKINGS:
Power Symbol (1)

MARKING COLOR:
Black

MATERIALS

BODY:
Polyamide 6/6 (PA66), UL94 V-2

ACTUATOR:
Polyamide 6/6 (PA66), UL94 V-2

CONTACT CARRIER:
Polyamide 6/6 (PA66), UL94 V-2

SPRINGS:
Steel

MOBILE CONTACT:
Silver Plated Copper

CONTACTS:
Silver Plated Copper

TERMINALS:
Silver Plated Copper

| | | | |
|----------------|------|----------|-----|
| BODY | A | 09/08/07 | CAB |
| COLORS | A | 10/07/08 | CAB |
| MATERIALS | A | 09/08/07 | CAB |
| SPECIFICATIONS | B | 10/05/25 | CAB |
| REFERENCE | REV. | DATE | BY |

THE INFORMATION CONTAINED IN THIS DOCUMENT IS PROPRIETARY TO E-SWITCH AND IS NOT TO BE COPIED OR TRANSFERRED

| | | | | |
|------|----------------------|-------|----------|----------|
| B | REMOVED SEMKO RATING | 23314 | 04/16/10 | MJR |
| A | INITIAL RELEASE | 19158 | 10/07/08 | CAB |
| REV. | DESCRIPTION | PCR | DATE | DRAWN BY |

| | |
|--------------------|----------------------|
| DIMENSIONS | INCHES [MILLIMETERS] |
| GENERAL TOLERANCES | ±0.008 [±0.2] / ±1° |
| SCALE | DRAWING NOT TO SCALE |
| PROJECTION | 1ST ANGLE |

| | | | |
|---------------|--|-----------------|----------|
| E-SWITCH | | LAMB INDUSTRIES | |
| PR142C1411 | | | |
| ITEM NUMBER | | DATE | REVISION |
| 38-PR142C1411 | | JULY 8, 2010 | B |

Mouser Electronics

Authorized Distributor

Click to View Pricing, Inventory, Delivery & Lifecycle Information:

[E-Switch:](#)

[PR142C1411](#)