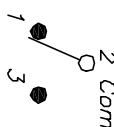


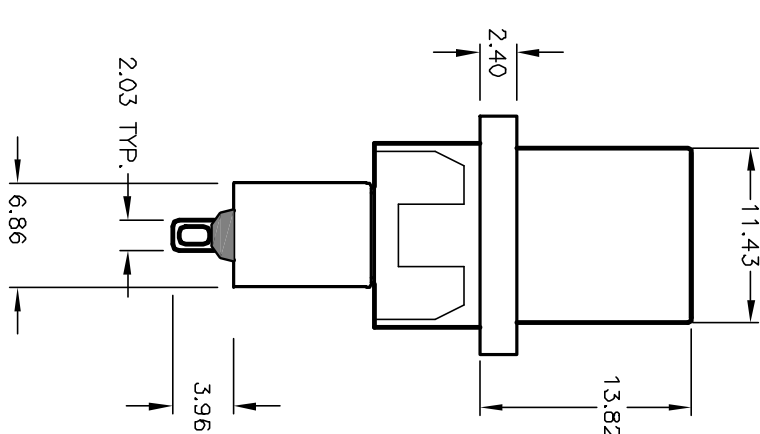
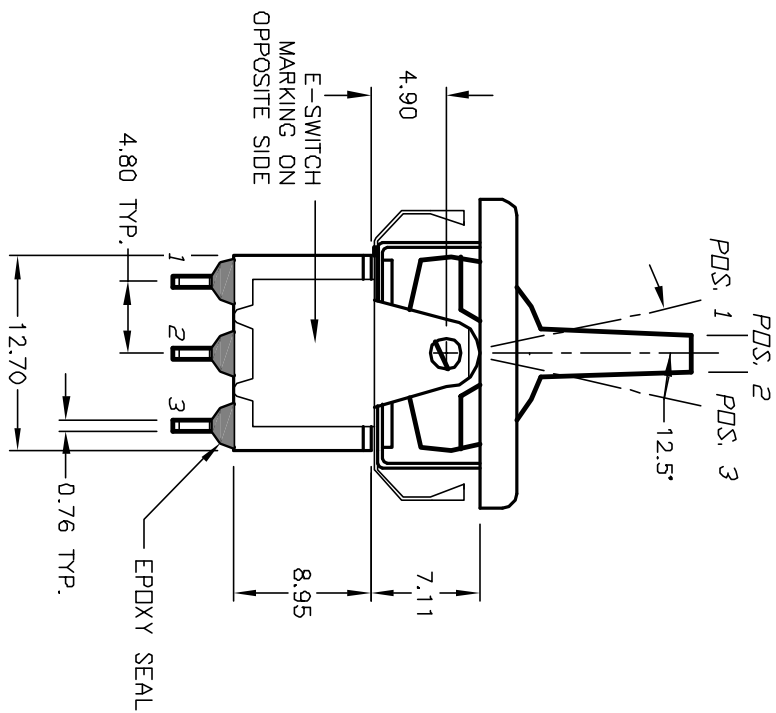
BLACK FRAME

RECOMMENDED PANEL MOUNTING



CIRCUIT: SPDT

PANEL THICKNESS
1.52 TO 3.18
* DIMENSION IS 15.75/15.88
FOR PANEL THICKNESS BETWEEN
1.52mm TO 3.18mm



NOTES:

1. ALL DIMENSIONS IN MM
2. GENERAL TOLERANCE: X.X=±0.4
X.XX=±0.25
3. TERM. NOS. FOR REF. ONLY
4. RATING: 0.4VA @20 max. (AC or DC)
5. MATERIAL: FIXED TERMINAL & MOVING CONTACT
Copper Alloy w/Gold plate over
Nickel plate.
6. CONTACT RESISTANCE: 10mILLI Ohms max initial
@2-4VDC, 100mA for AG & AU
7. ELECTRICAL LIFE: 50,000 make-and-break
cycles at full load.
8. INSULATION RESISTANCE: 1,000M Ohm min.
9. DIELECTRIC STRENGTH: 1000V RMS @sea level
10. OPERATING TEMP.: -30°C to 85°C

() = Momentary

SWITCH FUNCTION			
PDS. 1	PDS. 2	PDS. 3	
<DN>	DIFF	<DN>	
2-3	DPEN	2-1	

E-SWITCH®

REV.		DESCRIPTION		DATE		CHKD	
B	12263	REVISED AND REDRAWN		6/25/02		CB	
ECN No.							
THE INFORMATION CONTAINED IN THIS DOCUMENT IS PROPRIETARY TO E-SWITCH AND IS NOT TO BE COPIED OR TRANSFERRED							
TITLE				SCALE		DATE	
300 SP-4 R7 BLK M1 R E BLK (GOLD CONTACTS)				2:1		6/25/02	
				DR		DWG	
				CB		T314005	
				REV		B	

Mouser Electronics

Authorized Distributor

Click to View Pricing, Inventory, Delivery & Lifecycle Information:

[E-Switch:](#)

[300SP4R7BLKM1REBLK](#)