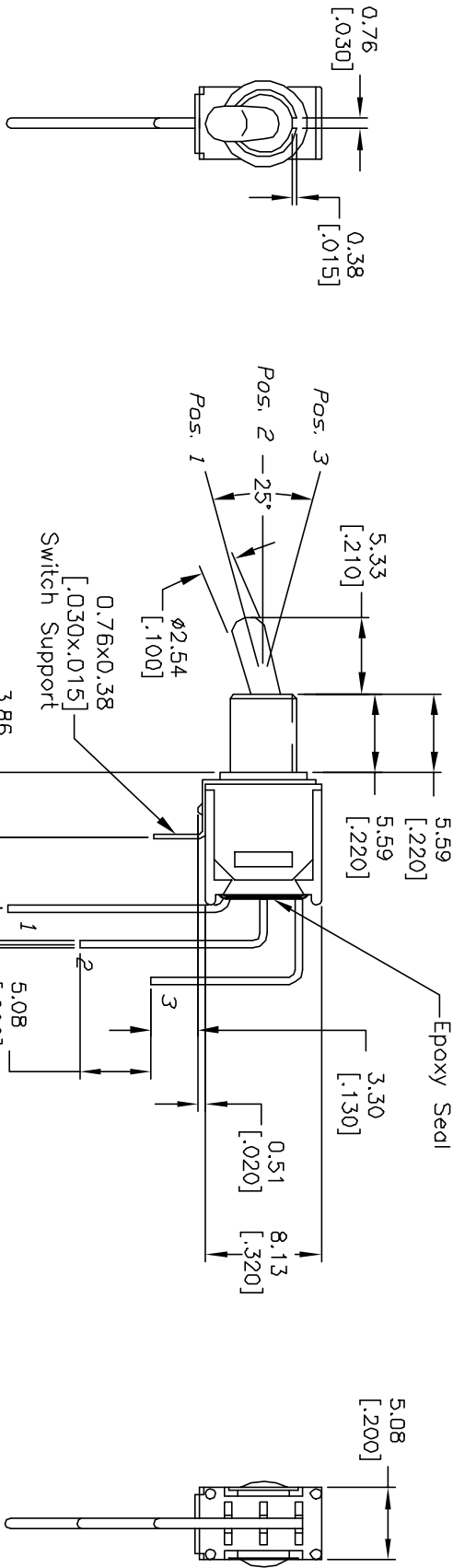
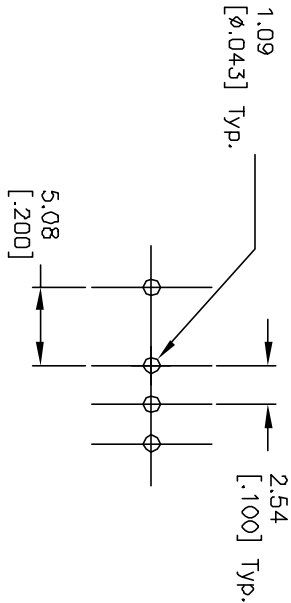


CIRCUIT: SPDT
CONTACT CONFIGURATION

SWITCH FUNCTION		
POS. 1	POS. 2	POS. 3
<DN>	OFF	<DN>
2-3	OPEN	2-1

()=Momentary



NOTES:

1. ALL DIMENSIONS IN MM [INCH]
2. GENERAL TOLERANCE: 0.0=±0.4
0.00=±0.25
3. TERM. NOS. FOR REF. ONLY
4. RATING: .4VA max. @ 20VDC OR VAC max.
5. FIXED TERM. MOVING CONTACT: GOLD OVER NICKEL OVER COPPER ALLOY
6. ELECTRICAL LIFE: 30,000 make-and-break cycle at full load.
7. DIELECTRIC STRENGTH: 1,000 V RMS @sed level.
8. OPERATING TEMP.: -30°C to 85°C

TITLE			
200 MSP-4 T2 B4 M7 R E			
REV.	ECN No.	DATE	CHKD
A	11945	1/24/02	CJC
RELEASED FOR PRODUCTION			
DESCRIPTION			
THE INFORMATION CONTAINED IN THIS DOCUMENT IS PROPRIETARY TO E-SWITCH AND IS NOT TO BE COPIED OR TRANSFERRED			
SCALE			
2:1			
DATE			
1/24/02			
DR			
CJC			
DWG			
T211085			
REV			
A			

Mouser Electronics

Authorized Distributor

Click to View Pricing, Inventory, Delivery & Lifecycle Information:

[E-Switch:](#)

[200MSP4T2B4M7RE](#)