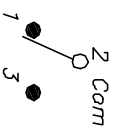





RECOMMENDED P.C.B. LAYOUT



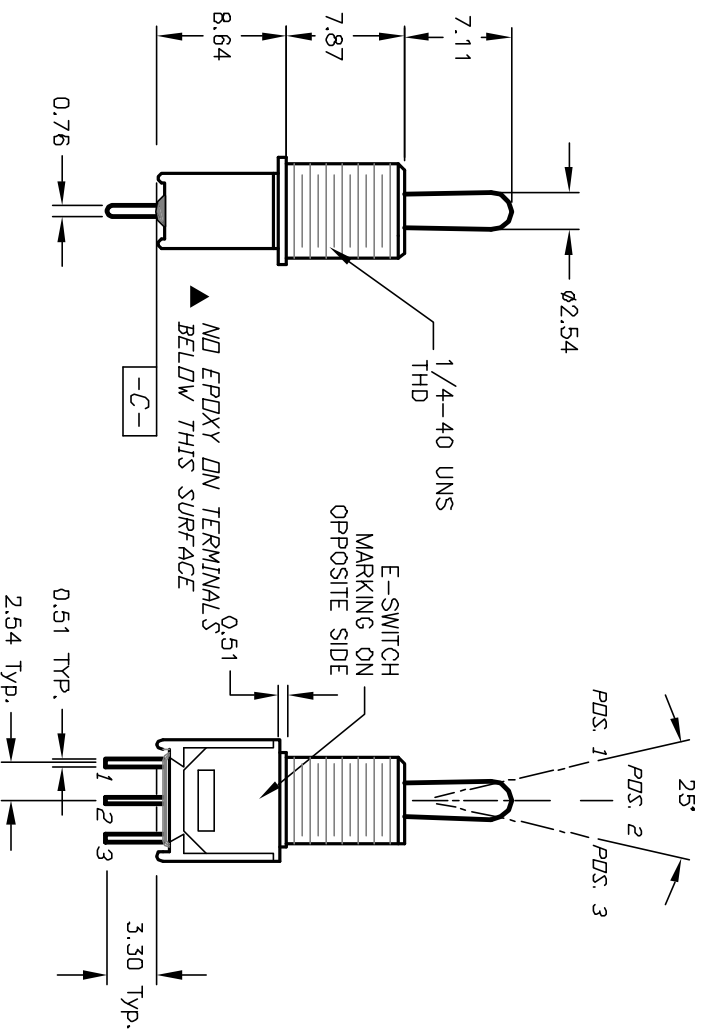
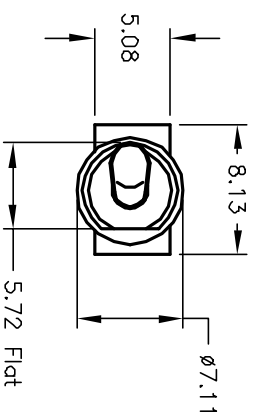
CIRCUIT: SPDT

SWITCH FUNCTION		
POS. 1	POS. 2	POS. 3
		
(C)	(NC)	(NO)
2-3	OPEN	2-1

$\langle \rangle$  = Momentary

NOTES:

1. ALL DIMENSIONS IN MM
2. GENERAL TOLERANCE: X,X=±0.4  
X,XX=±0.25
3. TERM. NOS. FDR REF. ONLY
4. CONTACT RATING: 3A @120VAC OR 28VDC,  
1A @250VAC
5. FIXED TERM/MOVING CONTACT  
COPPER ALLOY W/SILVER PLATE.
6. ELECTRIC LIFE: 30,000 make-and-break cycles  
at full load.
7. INSULATION RESISTANCE: 1,000 M ohm min.
8. DIELECTRIC STRENGTH: 1,000 V RMS @sea level.
9. OPERATING TEMP: -30°C to 85°C
10. ▲ DESIGNATE MAJOR FEATURE

**E-SWITCH®**

			TITLE			
A	12587	RELEASED FOR PRODUCTION	11/20/02	CJB	200 MSP-4 T2 B1 M2 Q E	
REV.	ECN No.	DESCRIPTION	DATE	CHKD		
THE INFORMATION CONTAINED IN THIS DOCUMENT IS PROPRIETARY TO E-SWITCH AND IS NOT TO BE COPIED OR TRANSFERRED						
SCALE			2:1	DATE	11/20/02	DR
					CJB	DWG
					T214050	REV
						A

# Mouser Electronics

Authorized Distributor

Click to View Pricing, Inventory, Delivery & Lifecycle Information:

[E-Switch:](#)

[200MSP4T1B5M2QE](#)