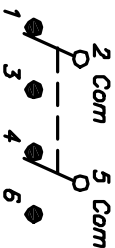
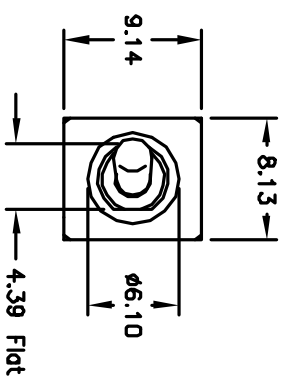


RECOMMENDED P.C.B. LAYOUT

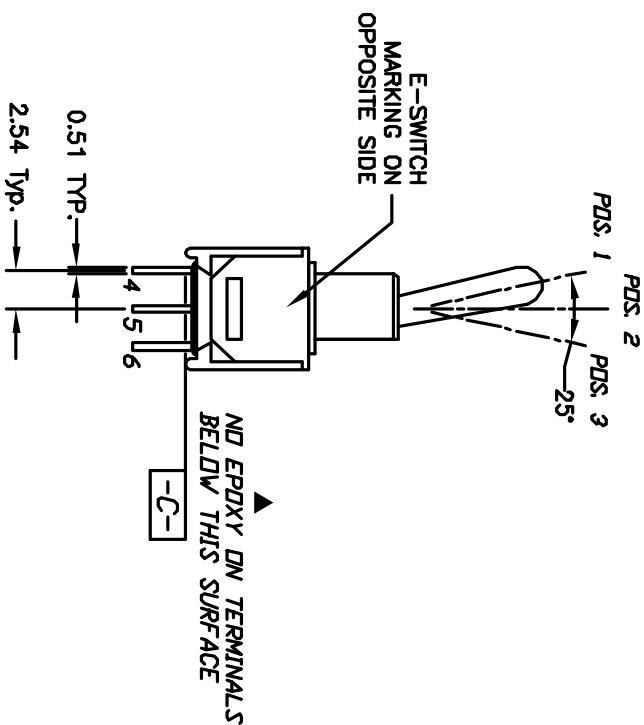
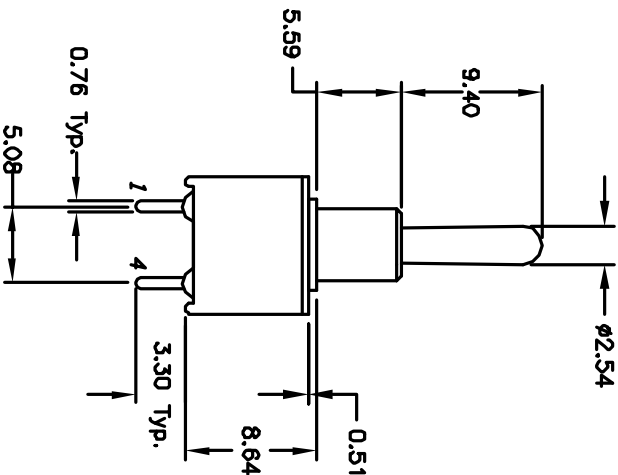


CIRCUIT: DPDT
CONTACT CONFIGURATION

SWITCH FUNCTION		
PDS. 1	PDS. 2	PDS. 3
DN	NONE	DN
2-3,5-6	OPEN	2-1,5-4

NOTES:

1. ALL DIMENSIONS IN MM
2. GENERAL TOLERANCE: X.X=±0.4
X.XX=±0.25
3. TERM. NOS. FOR REF. ONLY
4. CONTACT RATING: 0.4VA max. 20VAC or DC
5. FIXED TERM/MOVING CONTACT:
COPPER ALLOY w/GOLD PLATE OVER
Nickel plate.
6. ELECTRIC LIFE: 30,000 make-and-break cycles
at full load.
7. INSULATION RESISTANCE: 1,000 M ohm min.
8. DIELECTRIC STRENGTH: 1,000 V RMS 1 sec level.
9. OPERATING TEMP.: -30°C to +85°C



B	12664	REV DIMENSION, add notes	12/26/02	CB
A	10691	RELEASED FOR PRODUCTION	6/19/00	GLG
REV.	ECN NO.	DESCRIPTION	DATE	CHKD

TITLE				
200 MDP-1 T1 B2 M2 R E (GOLD CONTACTS)				
SCALE				
2:1				
DATE				
6/19/00				
DR				
GLG				
JWG				
T221024				
REV				
B				

E-SWITCH®

Mouser Electronics

Authorized Distributor

Click to View Pricing, Inventory, Delivery & Lifecycle Information:

[E-Switch:](#)

[200MDP1T1B2M2RE](#)