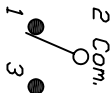





RECOMMENDED PCB LAYOUT



CIRCUIT: SPDT
CONTACT CONFIGURATION

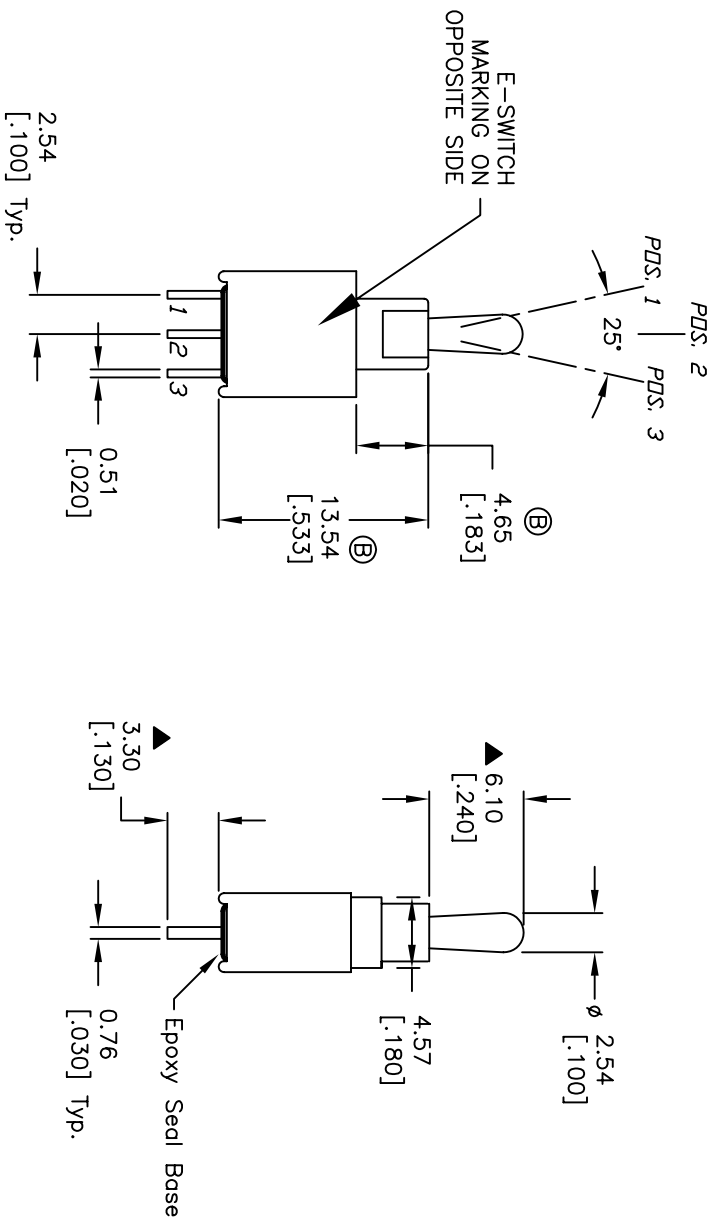
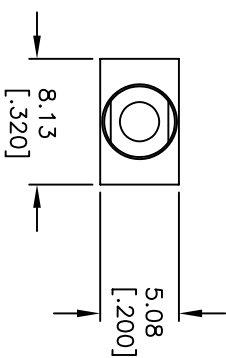
SWITCH FUNCTION			
POS. 1	POS. 2	POS. 3	
			
DN	OFF	DN	
2-3	OPEN	2-1	


NOTES:

1. ALL DIMENSIONS IN MM [INCH]
2. GENERAL TOLERANCE: $X.X = \pm 0.4$
 $X.XX = \pm 0.25$
3. TERMINAL NUMBERS FOR REF ONLY
4. RATING: 3A @120V AC or 28VDC;
1A @250VAC.
5. FIXED TERM. & MOVING CONTACT:
Copper ALLOY W/Silver plate.
6. MECHANICAL LIFE: 30,000 make—and—break cycles
at full load.
7. CONTACT RESISTANCE: 20 MILE—OHM MAX.
8. INSULATION RESISTANCE: 1,000 Mega—ohm min.
9. DIELECTRIC STRENGTH: 1,000 V RMS @sea level.
10. OPERATING TEMP.: -30°C to $+85^{\circ}\text{C}$
11. ▲ DENOTES CRITICAL PARAMETER.
12. 2002/95/EC (ROHS) COMPLIANT

B	17922	CORRECT 2 DIMENSIONS	1/15/08	BLR
A	12200	RELEASED FOR PRODUCTION	5/31/02	CB
REV.	ECN NO.	DESCRIPTION	DATE	CHKD

THE INFORMATION CONTAINED IN THIS DOCUMENT
IS PROPRIETARY TO E-SWITCH AND IS
NOT TO BE COPIED OR REPRODUCED



 E-SWITCH				
TITLE				
2004 W MSP-3 T2 A1 M2 Q E				
SCALE	DATE	DR	DWG	REV
2:1	1/15/08	BLR	T201302	B

Mouser Electronics

Authorized Distributor

Click to View Pricing, Inventory, Delivery & Lifecycle Information:

[E-Switch:](#)

[200AWMSP3T2A1M2QE](#)