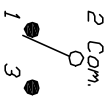





RECOMMENDED PCB LAYOUT

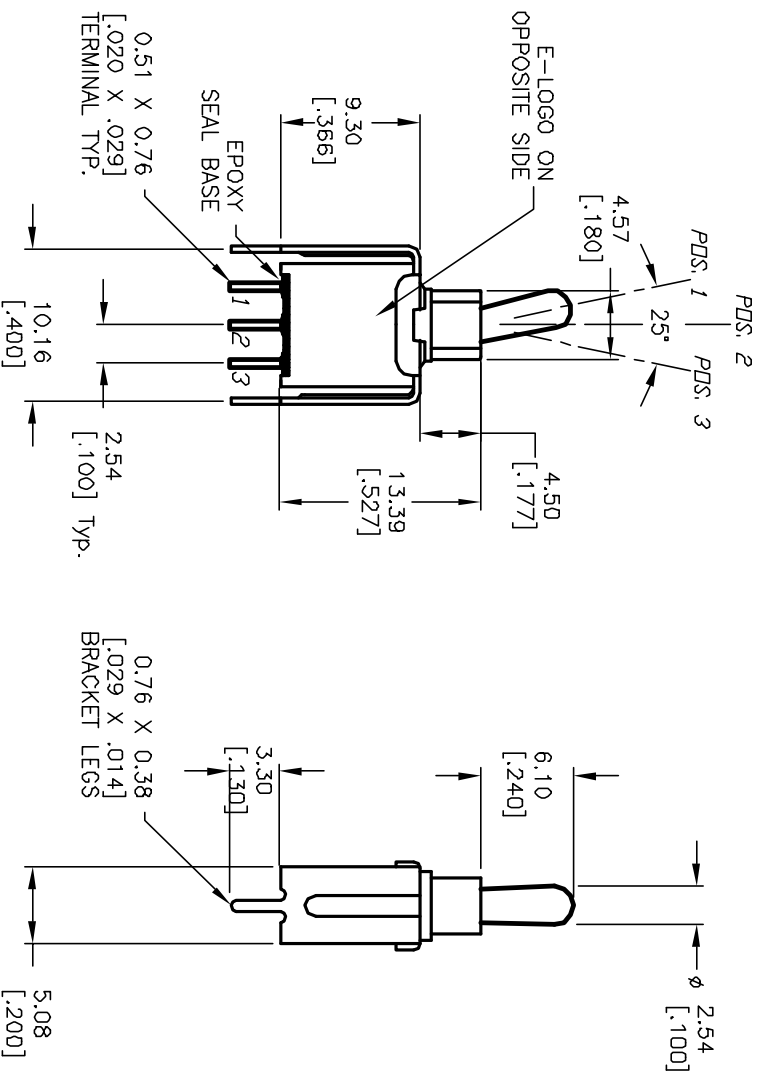


SPDT CIRCUIT
CONTACT CONFIGURATION

SWITCH FUNCTION		
POS. 1	POS. 2	POS. 3
		
DN	NONE	DN
2-3	OPEN	2-1

NOTES:

1. ALL DIMENSIONS IN MM [INCH]
2. GENERAL TOLERANCE: $X.X=\pm 0.4$
 $X.XX=\pm 0.25$
3. TERMINAL NUMBERS FOR REF ONLY
4. RATING: 0.4VA @20VAC or DC
5. FIXED TERM. & MOVING CONTACT:
COPPER ALLOY W/GOLD PLATE over
NICKEL PLATE.
6. ELECTRIC LIFE: 50,000 make-and-break cycles
at full load.
7. INSULATION RESISTANCE: 1,000 Mega-ohm min.
8. DIELECTRIC STRENGTH: 1,000 V RMS @sec level.
9. OPERATING TEMP.: -30°C to +85°C



				8. DIELECTRIC STRENGTH: 1,000 V RMS @sed level. 9. OPERATING TEMP.: -30°C to +85°C																																			
A	12052	RELEASED FOR PRODUCTION	4/10/02	CB																																			
REV.	ECN NO.	DESCRIPTION	DATE	CHKD																																			
THE INFORMATION CONTAINED IN THIS DOCUMENT IS PROPRIETARY TO E-SWITCH AND IS NOT TO BE COPIED OR TRANSFERRED																																							
<table border="1"> <tr> <td colspan="8">TITLE</td> </tr> <tr> <td colspan="8">2004 W/MSP-1 T2 A1 VS2 R E (GOLD CONTACTS)</td> </tr> <tr> <td>SCALE</td> <td colspan="2">DATE</td> <td>DR</td> <td colspan="2">DWG</td> <td colspan="2">REV</td> </tr> <tr> <td>2:1</td> <td colspan="2">4/10/02</td> <td>CB</td> <td colspan="2">T201207</td> <td colspan="2">A</td> </tr> </table>								TITLE								2004 W/MSP-1 T2 A1 VS2 R E (GOLD CONTACTS)								SCALE	DATE		DR	DWG		REV		2:1	4/10/02		CB	T201207		A	
TITLE																																							
2004 W/MSP-1 T2 A1 VS2 R E (GOLD CONTACTS)																																							
SCALE	DATE		DR	DWG		REV																																	
2:1	4/10/02		CB	T201207		A																																	
<div style="text-align: center;"> E-SWITCH® </div>																																							

Mouser Electronics

Authorized Distributor

Click to View Pricing, Inventory, Delivery & Lifecycle Information:

[E-Switch:](#)

[200AWMSP1T2A1VS2RE](#)