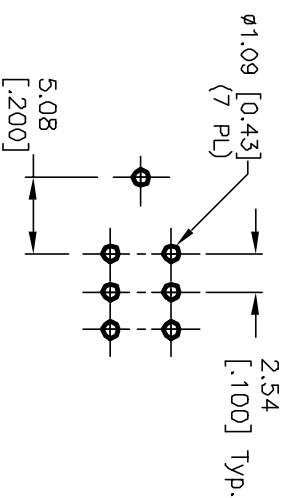
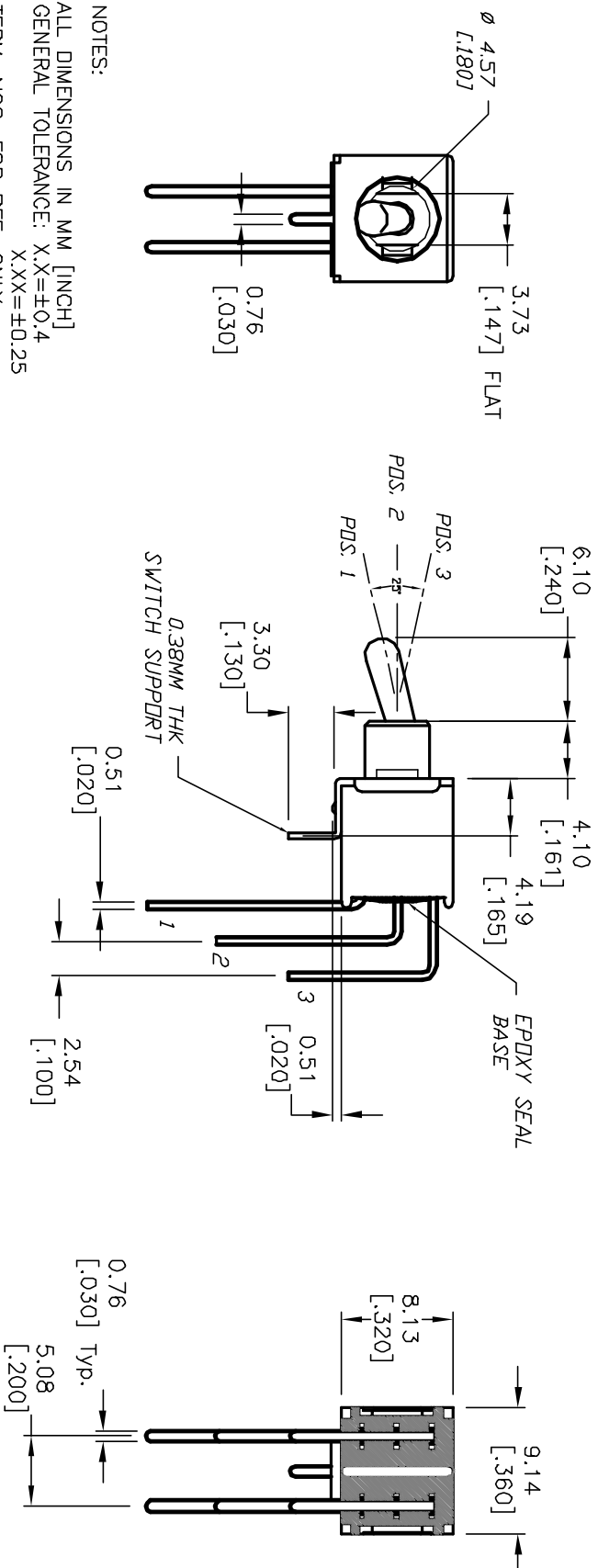


CIRCUIT: DPDT  
CONTACT CONFIGURATION

SWITCH FUNCTION		
POS. 1	POS. 2	POS. 3
DN	NONE	DN
2-3,5-6	OPEN	2-1,5-4



RECOMMENDED P.C.B. LAYOUT



## NOTES:

1. ALL DIMENSIONS IN MM [INCH]
2. GENERAL TOLERANCE:  $X.X = \pm 0.4$   
 $X.XX = \pm 0.25$
3. TERM. NOS. FOR REF. ONLY
4. RATING: 0.4(VA) max. @20V max. (AC or DC)
5. FIXED TERM. & MOVING CONTACT: Copper alloy w/Gold plate over Nickel plate
6. ELECTRICAL LIFE: 50,000 make-and-break cycles at full load.
7. INSULATION RESISTANCE: 1000M ohm min.
8. DIELECTRIC STRENGTH: 1000V RMS min. @sea level.
9. OPERATING TEMP.:  $-30^{\circ}\text{C}$  to  $85^{\circ}\text{C}$

**E-SWITCH®**

				8. DIELECTRIC STRENGTH: 1000V RMS min. @seq level.			
				9. OPERATING TEMP.: -30°C to 85°C			
A	12534	RELEASED FOR PRODUCTION	11/4/02	CJB			
REV.	ECN No.	DESCRIPTION	DATE	CHKD			
THE INFORMATION CONTAINED IN THIS DOCUMENT IS PROPRIETARY TO E-SWITCH AND IS NOT TO BE COPIED OR TRANSFERRED							
TITLE							
200A MDP-1 T2 A1 M7 R E (GOLD CONTACTS)							
SCALE		DATE		DR	JWG	REV	
2:1		5/1/02		CJB	T202106	A	

# Mouser Electronics

Authorized Distributor

Click to View Pricing, Inventory, Delivery & Lifecycle Information:

[E-Switch:](#)

[200AWMDP1T2A1M7RE](#)