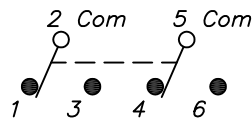


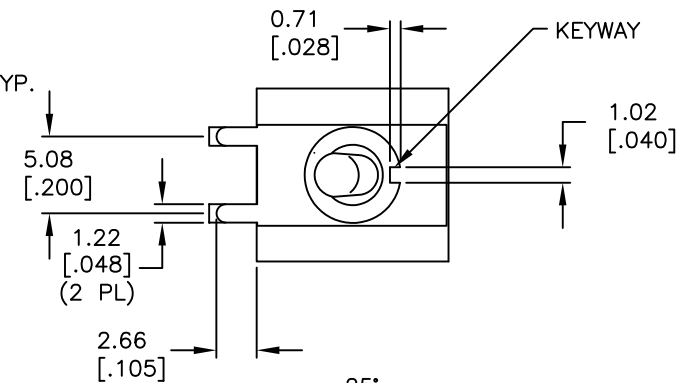
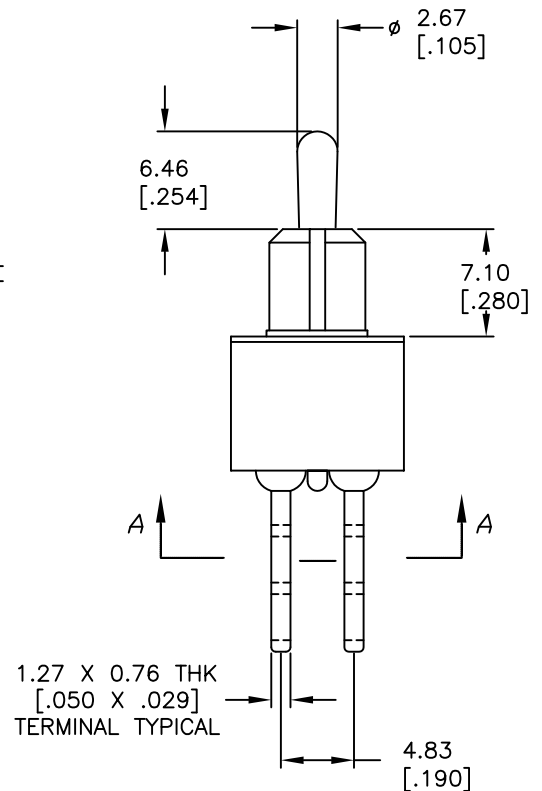
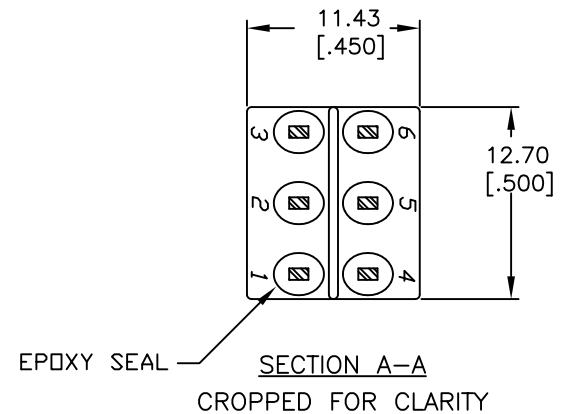
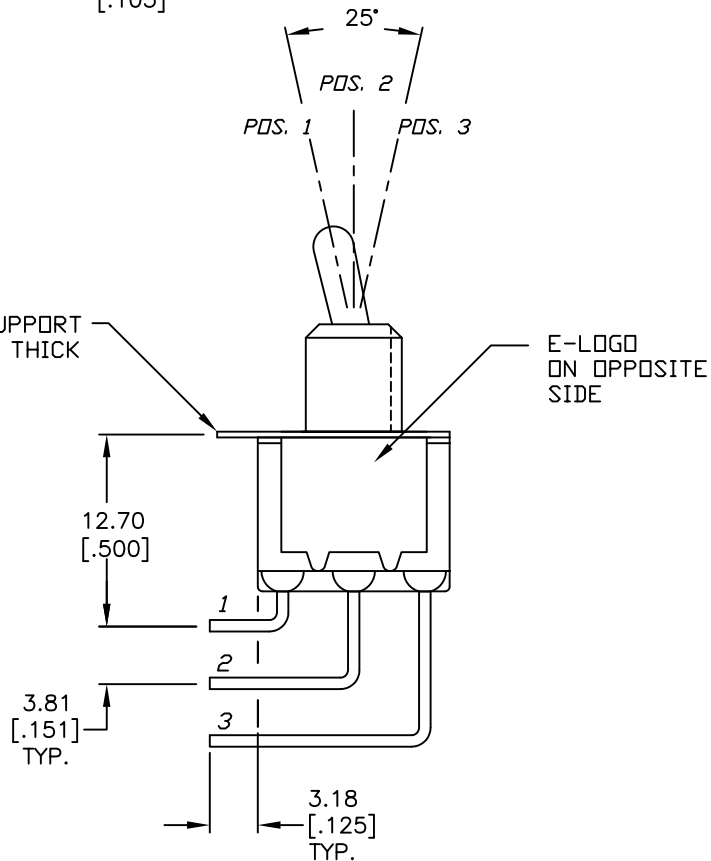
RECOMMENDED P.C.B. LAYOUT

CIRCUIT: DPDT
CONTACT CONFIGURATION

SWITCH FUNCTION		
PDS. 1	PDS. 2	PDS. 3
ON	OFF	ON
2-3,5-6	OPEN	2-1,5-4

NOTES:

- ALL DIMENSIONS IN MM [INCH]
- GENERAL TOLERANCE: $X.X \pm 0.4$
 $X.XX \pm 0.25$
- TERM. NOS. FOR REF. ONLY
- RATING: 5A @120VAC or 28VDC
2A @250VAC.
- FIXED TERM. & MOVING CONTACT:
Copper Alloy W/Silver plate.
- ELECTRICAL LIFE: 50,000 make-and-break cycles
at full load.
- INSULATION RESISTANCE: 1,000M ohm min.
- DIELECTRIC STRENGTH: 1,000V RMS @sea level.
- OPERATING TEMP.: -30°C to +85°C.

SWITCH SUPPORT
0.50 [.019] THICK**E-SWITCH®**

TITLE

100DP3T2B4M7QE

SCALE

2:1

DATE

12/4/03

DR

AR

DWG

T123025

REV

B

THE INFORMATION CONTAINED IN THIS DOCUMENT
IS PROPRIETARY TO E-SWITCH AND IS
NOT TO BE COPIED OR TRANSFERRED

B	23199	UPDATED DIM. 6.36 TO 6.46	2/5/18	MJR
A	13638	RELEASED FOR PRODUCTION	12/4/03	AR
REV.	ECN No.	DESCRIPTION	DATE	CHKD

Mouser Electronics

Authorized Distributor

Click to View Pricing, Inventory, Delivery & Lifecycle Information:

[E-Switch:](#)

[100DP3T2B4M7QE](#)