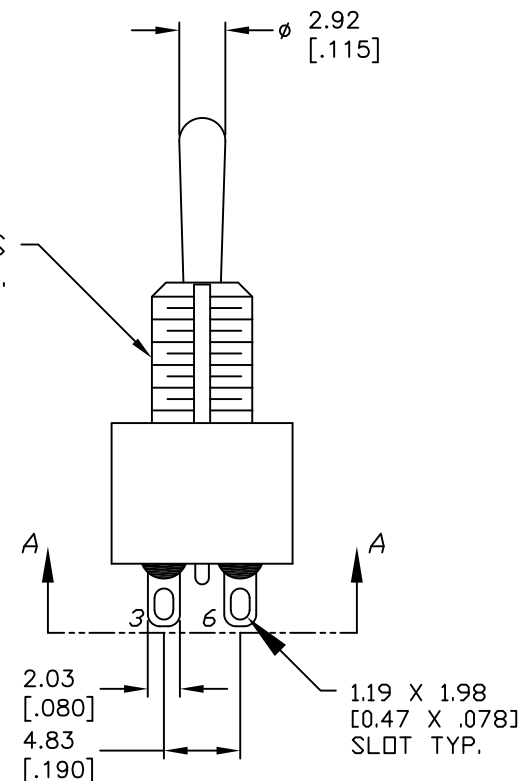
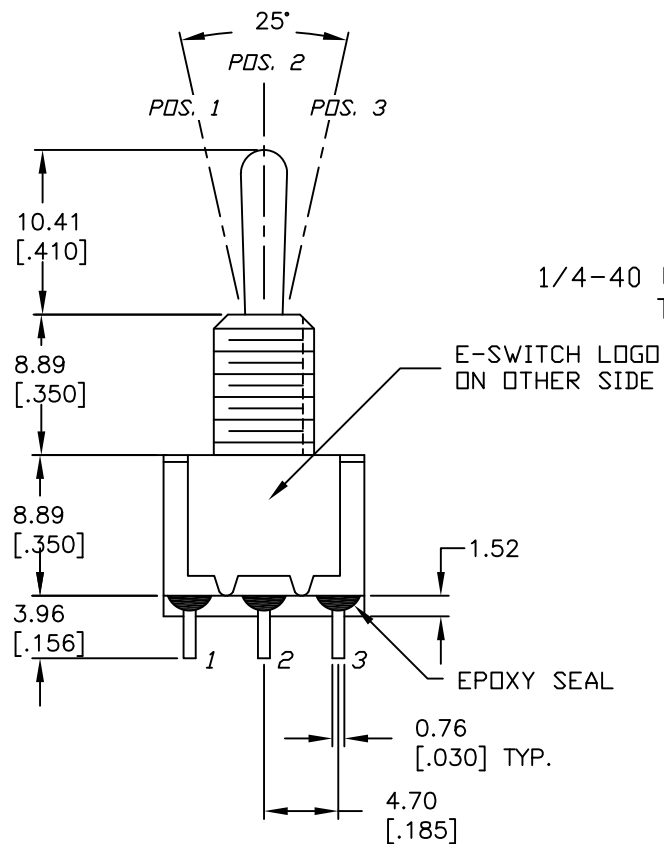


CIRCUIT: DPDT

SWITCH FUNCTION		
PDS. 1	PDS. 2	PDS. 3
ON	NONE	ON
2-3,5-6	OPEN	2-1,5-4

## NOTES:

1. ALL DIMENSIONS IN MM [INCH]
2. GENERAL TOLERANCE: X.X=±0.4  
X.XX=±0.25
3. TERM. NOS. FOR REF. ONLY
4. RATING: 5A @120V AC, or 28VDC  
2A @250V AC
5. MATERIALS: FIXED TERM. & MOVING CONTACT:  
Copper Alloy w/Silver plate
6. ELECTRICAL LIFE: 50,000 make-and-break  
cycles at full load.
7. INSULATION RESISTANCE: 1,000M ohm min.
8. DIELECTRIC STRENGTH: 1000V RMS @sea level
9. OPERATING TEMP.: -30°C to 85°C



OBJECT ID: 00024167

**E-SWITCH®**

TITLE

100 DP-1 T1 B1 M1 Q E

SCALE

2:1

DATE

9/25/02

DR

CJB

DWG

T121005

REV

C

THE INFORMATION CONTAINED IN THIS DOCUMENT  
IS PROPRIETARY TO E-SWITCH AND IS  
NOT TO BE COPIED OR TRANSFERRED

C	15753	ADD ROHS NOTE	2/10/06	PH
B	11520	REVISED AND REDRAWN	9/24/02	CJB
REV.	ECN No.	DESCRIPTION	DATE	CHKD

# Mouser Electronics

Authorized Distributor

Click to View Pricing, Inventory, Delivery & Lifecycle Information:

[E-Switch:](#)

[100DP1T1B1M1QE](#)