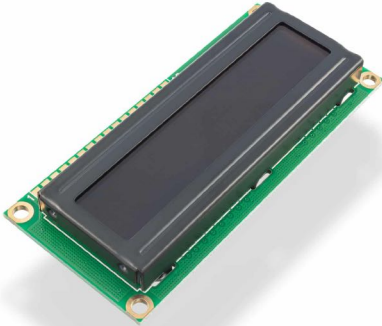


LCD DISPLAY 16X2 ORANGE/BLACK



Weight 34 g

DESCRIPTION

LCD screen with HD44780 controller enables showing text, symbols, value or anything else that comes from Croduino/Arduino. It is capable of showing 16 symbols in two lines and therefore can be used in many projects that need to send clearly visible and legible output information.

- **The color of symbols:** orange
- **Backlight:** black
- **Dimensions:** 80 x 36 x 12 mm
- **Screen dimensions:** 64.5 x 16 mm
- **Voltage:** 5V
- Comes with 16-pin flat, non-soldered male header.

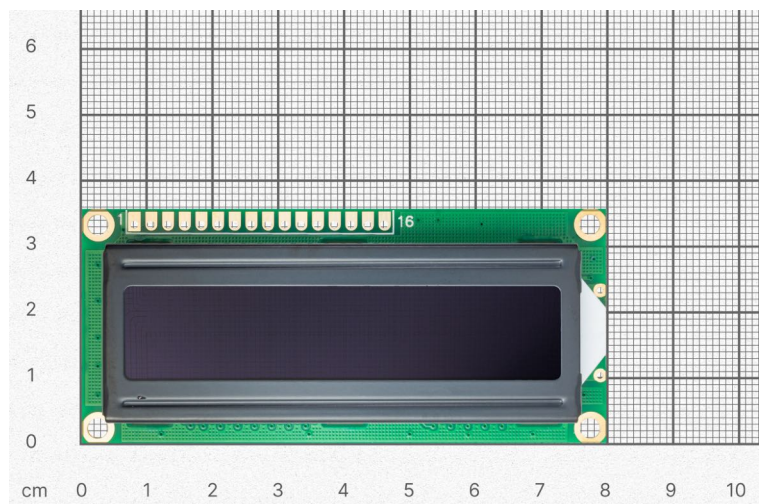
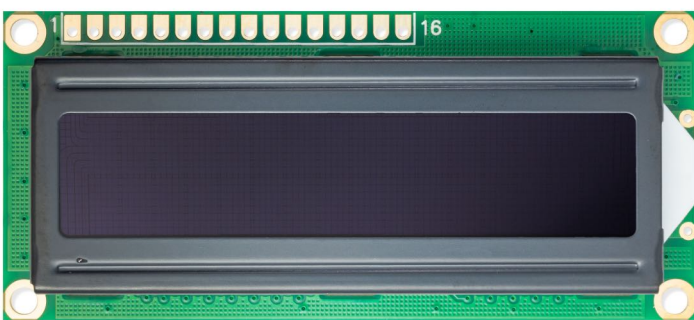
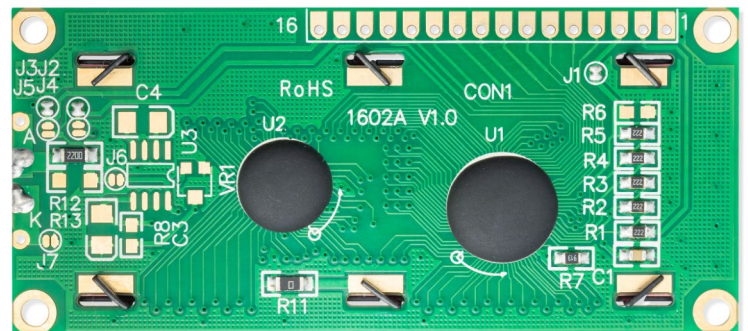
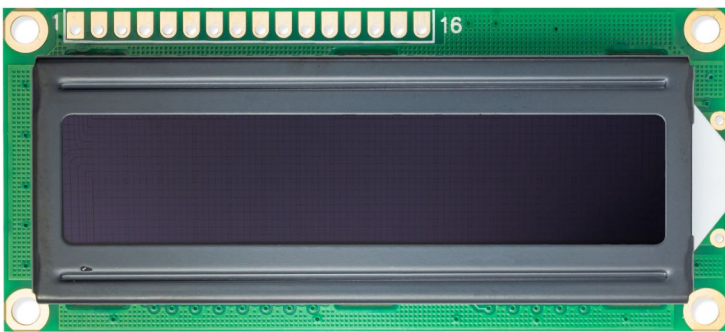
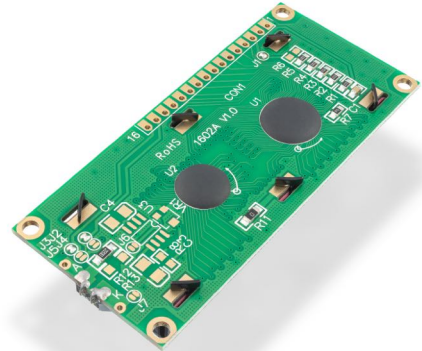
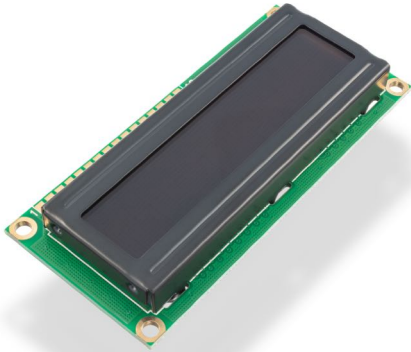
FEATURES

- The color of symbols: orange
- Backlight: black
- Voltage: 5V
- Comes with 16-pin flat, non-soldered male header.
- Screen dimensions: 64.5 x 16 mm / 2.5" x 0.6"
- Dimensions: 80 x 36 x 12 mm / 3.1" x 1.4" x 0.5"

USEFUL LINKS

- [Datasheet](#)

OTHER IMAGES



Weight

34 g

Mouser Electronics

Authorized Distributor

Click to View Pricing, Inventory, Delivery & Lifecycle Information:

[Soldered:](#)

[100811](#)