

# 1YN M.2 Module (EAR00389) Datasheet

- Wi-Fi 4, 802.11 b/g/n
- Bluetooth 5.2 BR/EDR/LE
- SDIO 3.0 interface, SDR25@50MHz
- Chipset: Infineon/Cypress CYW43439



*Get Up-and-Running Quickly and  
Start Developing Your Application On Day 1!*

**Embedded Artists AB**

Rundelsgatan 14  
211 36 Malmö  
Sweden

<https://www.EmbeddedArtists.com>

**Copyright 2024 © Embedded Artists AB. All rights reserved.**

No part of this publication may be reproduced, transmitted, transcribed, stored in a retrieval system, or translated into any language or computer language, in any form or by any means, electronic, mechanical, magnetic, optical, chemical, manual or otherwise, without the prior written permission of Embedded Artists AB.

**Disclaimer**

Embedded Artists AB makes no representation or warranties with respect to the contents hereof and specifically disclaim any implied warranties or merchantability or fitness for any particular purpose. The information has been carefully checked and is believed to be accurate, however, no responsibility is assumed for inaccuracies.

Information in this publication is subject to change without notice and does not represent a commitment on the part of Embedded Artists AB.

**Feedback**

We appreciate any feedback you may have for improvements on this document.

**Trademarks**

All brand and product names mentioned herein are trademarks, services marks, registered trademarks, or registered service marks of their respective owners and should be treated as such.

# Table of Contents

|          |  |           |
|----------|--|-----------|
| <b>1</b> | <b>Document Information</b>                                  | <b>4</b>  |
| 1.1      | Revision History   | 4         |
| <b>2</b> | <b>Introduction</b>  | <b>5</b>  |
| 2.1      | Benefits of Using an M.2 Module to get Wi-Fi/BT Connectivity | 5         |
| 2.2      | More M.2 Related Information                                 | 5         |
| 2.3      | ESD Precaution and Handling                                  | 5         |
| 2.4      | Product Compliance   | 6         |
| <b>3</b> | <b>Specification</b>   | <b>7</b>  |
| 3.1      | Power Up Sequence  | 8         |
| 3.2      | External Sleep Clock   | 8         |
| 3.3      | Mechanical Dimensions  | 9         |
| 3.4      | M.2 Pinning  | 11        |
| 3.5      | VDDIO Override Feature                                       | 15        |
| 3.6      | SDIO Interface   | 15        |
| 3.7      | Test Points  | 16        |
| 3.8      | Current Consumption Measurements                             | 17        |
| <b>4</b> | <b>Antenna</b>   | <b>18</b> |
| 4.1      | Mounting and Clearance                                       | 18        |
| 4.2      | Antenna Connector  | 18        |
| 4.3      | Overriding on-board PCB Trace Antenna                        | 19        |
| 4.4      | On-board Trace Antenna Performance                           | 20        |
| 4.4.1    | 1YN M.2 Module Mounted on iMX OEM Carrier Board              | 20        |
| 4.4.2    | 1YN M.2 Module Standalone                                    | 23        |
| <b>5</b> | <b>Software and Support</b>                                  | <b>25</b> |
| 5.1      | Software Driver  | 25        |
| 5.2      | Support  | 25        |
| <b>6</b> | <b>Regulatory</b>  | <b>27</b> |
| 6.1      | European Union Regulatory Compliance                         | 27        |
| <b>7</b> | <b>Notes</b>   | <b>28</b> |
| 7.1      | 1YN M.2 and iMX93 uCOM Issue                                 | 28        |
| <b>8</b> | <b>Disclaimers</b>   | <b>30</b> |
| 8.1      | Definition of Document Status                                | 31        |

# 1 Document Information

This document applies to the following products.

| <i>Product Name</i>   | <i>Type Number</i> | <i>Murata Module</i> | <i>Chipset</i> | <i>Product Status</i> |
|-----------------------|--------------------|----------------------|----------------|-----------------------|
| 1YN M.2 Module, rev A | EAR00389           | LBEE5KL1YN-814       | CYW43439       | Initial Production    |

## 1.1 Revision History

| <i>Revision</i> | <i>Date</i> | <i>Description</i>                                    |
|-----------------|-------------|---|
| PA1             | 2021-10-05  | First version.  |
| PA2             | 2024-12-11  | Added note about using 1YN with the iMX93 uCOM board. |

## 2 Introduction

This document is a datasheet that specifies and describes the *1YN M.2 module* mainly from a hardware point of view.

The main component in the design is Murata's 1YN module (full part number: LBEE5KL1YN-814), which in turn is based on the Infineon/Cypress CYW43439 chipset. The 1YN module enables Wi-Fi, Bluetooth and Bluetooth Low Energy (LE) communication.

There are multiple application areas for the 1YN M.2 Module:

- Industrial and building automation
- Asset management
- IoT applications
- Smart home: Voice assist device, smart printer, smart speaker, home automation gateway, and IP camera
- Retail/POS
- Healthcare and medical devices
- Smart city

### 2.1 Benefits of Using an M.2 Module to get Wi-Fi/BT Connectivity

There are several benefits to use an *M.2 module* to add connectivity to an embedded design:

- Drop-in, certified solution!
- Modular and flexible approaches to evaluate different Wi-Fi/BT solutions - with different trade-offs around performance, cost, power consumption, longevity, etc.
- Access to maintained software drivers (Linux and SDK) with responsive support from Murata.
- Supported by Embedded Artists' Developer's Kits for i.MX RT/6/7/8 development, including advanced debugging support on carrier boards
- One component to buy, instead of 40+
- No RF expertise is required
- Developed in close collaboration with Murata and NXP

### 2.2 More M.2 Related Information

For more information about the M.2 standard and Embedded Artists' adaptation, see: [M.2 Primer](#)

For more general information about the M.2 standard, see: <https://en.wikipedia.org/wiki/M.2>

The official M.2 specification (PCI Express M.2 Specification) is available from: [www.pcisig.com](http://www.pcisig.com)

### 2.3 ESD Precaution and Handling

Please note that the M.2 module come without any case/box and all components are exposed for finger touches – and therefore extra attention must be paid to ESD (electrostatic discharge) precaution, for example use of static-free workstation and grounding strap. Only qualified personnel should handle the product.

***Make it a habit always to first touch the mounting hole (which is grounded) for a few seconds with both hands before touching any other parts of the***



**boards.** That way, you will have the same potential as the board and therefore minimize the risk for ESD.

In general touch as little as possible on the boards to minimize the risk of ESD damage. The only reasons to touch the board are when mounting/unmounting it on a carrier board.

***Note that Embedded Artists does not replace modules that have been damaged by ESD.***

## 2.4 Product Compliance

Visit Embedded Artists' website at [http://www.embeddedartists.com/product\\_compliance](http://www.embeddedartists.com/product_compliance) for up-to-date information about product compliances such as CE, RoHS2, Conflict Minerals, REACH, etc.

### 3 Specification

This chapter lists some of the more important characteristics of the M.2 module, but it is not a full specification of performance and timing. The main component in the design is Murata's 1YN module (full part number: LBEE5KL1YN), which in turn is based around Infineon's CYW43439 chipset.

For a full specification, see Murata's 1YN Module (LBEE5KL1YN) product page:

<https://www.murata.com/products/connectivitymodule/wi-fi-bluetooth/overview/lineup/type1yn> and the LBEE5KL1YN datasheet: <https://wireless.murata.com/datasheet?/RFM/data/type1YN.pdf>

| Module / Chipset |                   |
|------------------|-------------------|
| Murata module    | LBEE5KL1YN -814   |
| Chipset          | Infineon CYW43439 |

| Wi-Fi          |   |
|----------------|---|
| Standards      | 802.11b/g/n, Wi-Fi 4                            |
| Network        | uAP and STA dual mode                           |
| Frequency      | 2.4GHz  |
| Data rates     | 11, 54, 65 Mbps                                 |
| Host interface | SDIO 3.0, SDR12@24MHz, SDR25@50MHz, DDR50@50MHz |

| Bluetooth       |                          |
|-----------------|--------------------------|
| Standards       | 5.2 BR/EDR/LE, 3Mbps PHY |
| Power Class     | Class 1                  |
| Host interface  | 4-wire UART@4MBaud       |
| Audio interface | PCM for audio            |

| Powering  |   |   |      |
|---|---|---|------|
| Supply voltage to M.2 module  | Min   | Typ   | Max  |
|   | 0.0V minimum<br>3.0V operating<br>3.2V RF specification | 3.3V  | 3.5V |
| <b>Note: Do not exceed minimum or maximum voltage. Module will be permanently damaged above this limit!</b> |   | <b>Note</b> that LBEE5KL1YN module specification has higher maximum voltage (4.2V), but other components on the M.2 module limit the maximum voltage. |      |
| Peak current  | TBD max   | The power supply must be designed for this peak current, which typically happens during the startup calibration process.                              |      |
| Receive mode current (WLAN)   | 47 mA typical max                                       | Note that current consumption varies widely between different operational modes.  |      |

|                              |                    |  |
|------------------------------|--------------------|--|
| Transmit mode current (WLAN) | 320 mA typical max | Note that current consumption varies widely between different operational modes. |
|------------------------------|--------------------|--|

| Environmental Specification                   |                            |
|---|----------------------------|
| Operational Temperature                       | -30 to +70 degrees Celsius |
| Specification Temperature                     | -10 to +55 degrees Celsius |
| Storage Temperature                           | -40 to +85 degrees Celsius |
| Relative Humidity (RH), operating and storage | 10 - 90% non-condensing    |

### 3.1 Power Up Sequence

The supply voltage shall not rise (10 - 90%) faster than 40 microseconds and not slower than 100 milliseconds.

Chipset signals WL\_REG\_ON (M.2 signal W\_DISABLE1#) and BT\_REG\_ON (M.2 signal W\_DISABLE2#) must be held low for at least 700 microseconds after supply voltage has reached specification level before pulled high. 2 clock cycles of the 32.678kHz clock must also have passed before any of the signals is pulled high. These clock cycles will typically occur during the 700 microseconds but if the clock signal has a long delay during power-up, the 700 microsecond period can be extended.

### 3.2 External Sleep Clock

The sleep clock signals can be applied to a powered and unpowered M.2 module.

| Clock Specification |  |
|---------------------|--|
| Frequency           | 32.768 kHz   |
| Frequency accuracy  | ±200 ppm including initial tolerance, aging, temperature, etc. |
| Duty cycle          | 30 - 70%   |
| Clock jitter        | 10 000 ppm max (during initial start-up)                       |
| Voltage level       | 3.3V logic, according to M.2 standard                          |

### 3.3 Mechanical Dimensions

The M.2 module is of type: 2230-S3-E according to the M.2 nomenclature. This means width 22 mm, length 30mm (without trace antenna), top side component height 1.5 mm and key-E connector. The table below lists the different dimensions and weight.

| M.2 Module Dimension                    | Value ( $\pm 0.15$ mm) | Unit |
|---|------------------------|------|
| Width                                   | 22                     | mm   |
| Height, with pcb trace antenna          | 44                     | mm   |
| Height, without pcb trace antenna       | 30                     | mm   |
| PCB thickness                           | 0.8                    | mm   |
| Maximum component height on top side    | 1.5                    | mm   |
| Maximum component height on bottom side | 0                      | mm   |
| Ground hole diameter                    | 3.5                    | mm   |
| Plating around ground hole, diameter    | 5.5                    | mm   |
| Module weight                           | 1.5 $\pm$ 0.5 gram     | gram |

Embedded Artists has added a non-standard feature to the 2230 M.2 modules designed together with Murata, NXP and Infineon (former Cypress). The pictures below illustrate the how the standard module size has been extended by 14 mm in the length direction in order to include a pcb trace antenna.

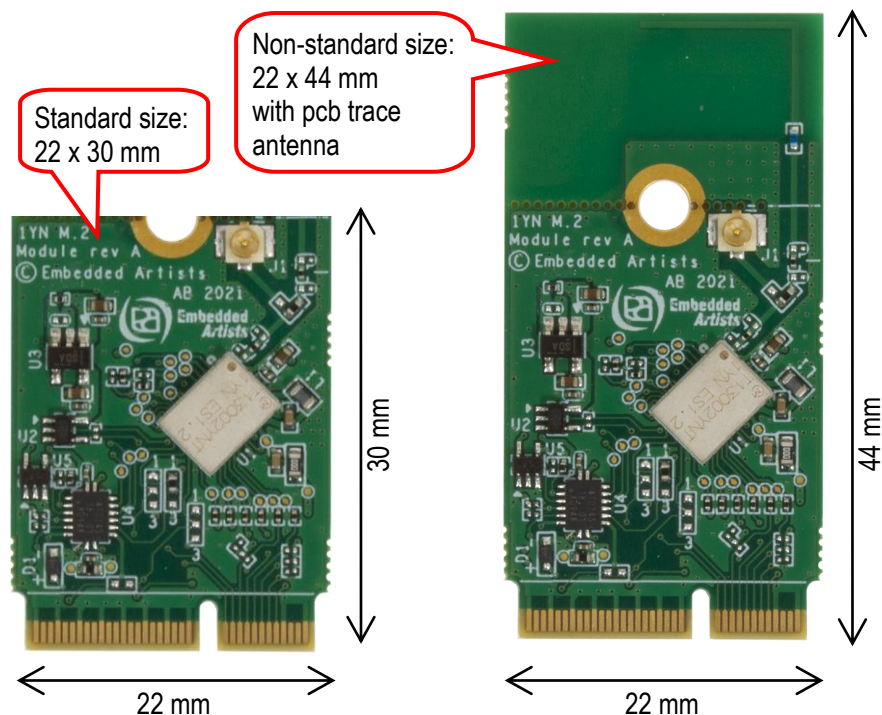


Figure 1 – M.2 Module with, and without, PCB Trace Antenna

The picture below gives dimensions for the grounded center (half) hole and the u.fl. antenna connector.

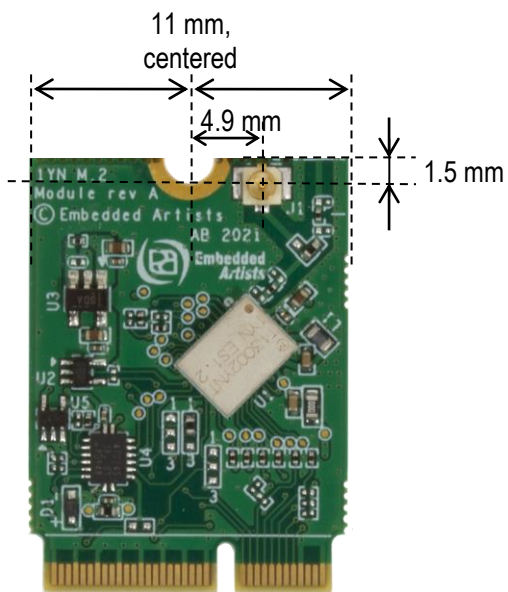


Figure 2 – M.2 Module Without Trace Antenna

### 3.4 M.2 Pinning

This section presents the pinning used for the M.2 module. It is essentially M.2 Key-E compliant with enhancements to support additional debug signals and 3.3V VDDIO override. The pin assignment for specific control and debug signals has been jointly defined by Embedded Artists, Murata, NXP and Infineon (former Cypress).

The picture below illustrates the edge pin numbering. It starts on the right edge and alternates between top and bottom side. The removed pads in the keying notch count (but are obviously non-existing).

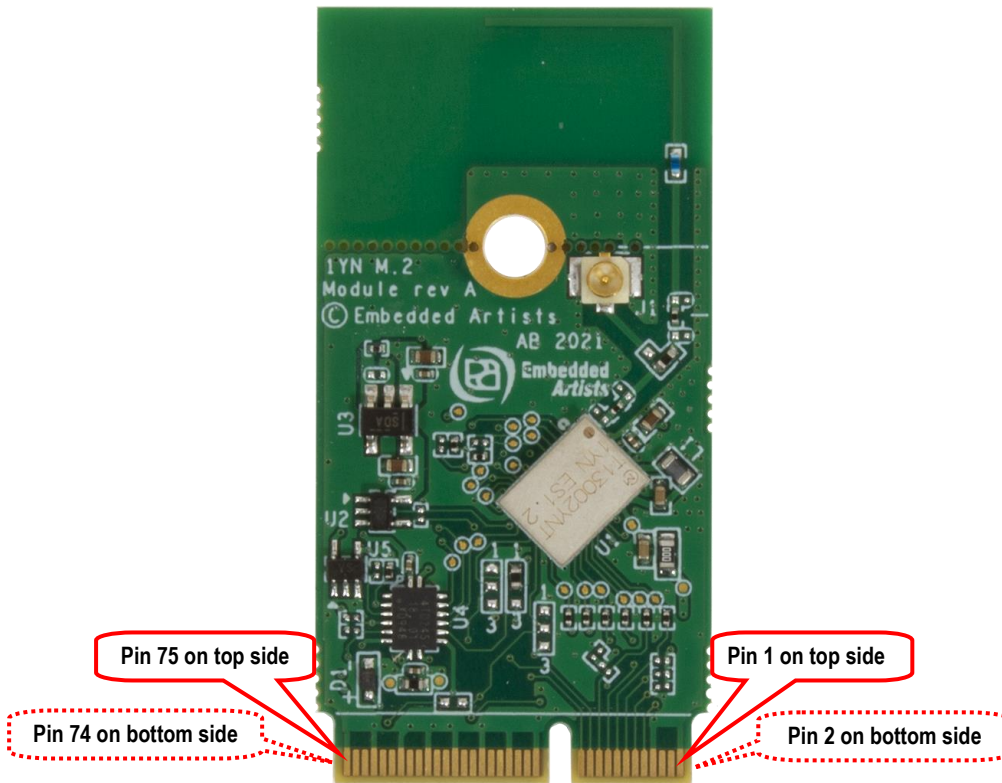


Figure 3 – M.2 Module Pin Numbering

The Wi-Fi interface use the SDIO or USB interface. The Bluetooth interface use the UART interface for control and PCM interface for audio. The table below lists the pin usage for the 1YN M.2 modules. The column "When is signal needed" signals four different categories:

- Always: These signals shall always be connected.
- Wi-Fi SDIO: These signals shall always be connected then the Wi-Fi interface is used via SDIO of the M.2 module.
- Bluetooth: These signals shall always be connected then the Bluetooth interface is used.
- Optional: These signals are optional to connect.

| Pin # | Side of pcb | M.2 Name | Voltage Level and Signal Direction | When is signal needed | Note  |
|-------|-------------|----------|------------------------------------|-----------------------|---|
| 1     | Top         | GND      | GND                                | Always                | Connect to ground   |
| 2     | Bottom      | 3.3 V    |                                    | Always                | Power supply input. Connect to stable, low-noise 3.3V supply. |
| 3     | Top         | USB_D+   |                                    |                       | Not connected.  |
| 4     | Bottom      | 3.3 V    |                                    | Always                | Power supply input. Connect to stable, low-noise 3.3V supply. |

|    |                   |             |                         |                 |   |
|----|-------------------|-------------|-------------------------|-----------------|---|
| 5  | Top               | USB_D-      |                         |                 | Not connected.  |
| 6  | Bottom            | LED_1#      |                         |                 | Not connected.  |
| 7  | Top               | GND         | GND                     | Always          | Connect to ground.  |
| 8  | Bottom            | PCM_CLK     | 1.8V I/O                | Bluetooth audio | For Bluetooth audio interface: BT_PCM_CLK<br>Connected to 1YN module, signal BT_PCM_CLK, pin 11   |
| 9  | Top               | SDIO_CLK    | 1.8V Input to M.2       | Wi-Fi SDIO      | For Wi-Fi SDIO interface: SDIO_CLK<br>Connected to 2AE module, signal SDIO_CLK, pin 20  |
| 10 | Bottom            | PCM_SYNC    | 1.8V I/O                | Bluetooth audio | For Bluetooth audio interface: BT_PCM_SYNC<br>Connected to 1YN module, signal BT_PCM_SYNC, pin 8  |
| 11 | Top               | SDIO_CMD    | 1.8V I/O                | Wi-Fi SDIO      | For Wi-Fi SDIO interface: SDIO_CMD<br>Connected to 1YN module, signal SDIO_CMD, pin 22<br>Note: Require an external 10-100K ohm pullup                      |
| 12 | Bottom            | PCM_OUT     | 1.8V output from M.2    | Bluetooth audio | For Bluetooth audio interface: BT_PCM_OUT<br>Connected to 1YN module, signal BT_PCM_OUT, pin 10   |
| 13 | Top               | SDIO_DATA0  | 1.8V I/O                | Wi-Fi SDIO      | For Wi-Fi SDIO interface: SDIO_D0<br>Connected to 1YN module, signal SDIO_DATA0, pin 24<br>Note: Require an external 10-100K ohm pullup                     |
| 14 | Bottom            | PCM_IN      | 1.8V input to M.2       | Bluetooth audio | For Bluetooth audio interface: BT_PCM_IN<br>Connected to 1YN module, signal BT_PCM_IN, pin 9  |
| 15 | Top               | SDIO_DATA1  | 1.8V I/O                | Wi-Fi SDIO      | For Wi-Fi SDIO interface: SDIO_D1<br>Connected to 1YN module, signal SDIO_DATA1, pin 26<br>Note: Require an external 10-100K ohm pullup                     |
| 16 | Bottom            | LED_2#      |                         |                 | Not connected.  |
| 17 | Top               | SDIO_DATA2  | 1.8V I/O                | Wi-Fi SDIO      | For Wi-Fi SDIO interface: SDIO_D2<br>Connected to 1YN module, signal SDIO_DATA2, pin 23<br>Note: Require an external 10-100K ohm pullup                     |
| 18 | Bottom            | GND         |                         | Always          | Connect to ground.  |
| 19 | Top               | SDIO_DATA3  | 1.8V I/O                | Wi-Fi SDIO      | For Wi-Fi SDIO interface: SDIO_D3<br>Connected to 1YN module, signal SDIO_DATA3, pin 25<br>Note: Require an external 10-100K ohm pullup                     |
| 20 | Bottom            | UART_WAKE#  | 3.3V OD output from M.2 | Bluetooth       | For Bluetooth UART interface: BT_HOST_WAKE_L<br>Connected to 1YN module, via open drain buffer, pin 38<br>Require an external 10K pullup resistor to 3.3V.  |
| 21 | Top               | SDIO_WAKE#  | 1.8V OD output from M.2 | Wi-Fi SDIO      | For Wi-Fi SDIO interface: WL_HOST_WAKE_L<br>Connected to 1YN module, via open drain buffer, pin 27<br>Note: Require an external 10K pullup resistor to 1.8V |
| 22 | Bottom            | UART_TXD    | 1.8V output from M.2    | Bluetooth       | For Bluetooth UART interface: BT_UART_TXD<br>Connected to 1YN module, pin 3   |
| 23 | Top               | SDIO_RESET# |                         |                 | Not connected.<br><br>The Wi-Fi SDIO interface is controlled by pin 56, W_DISABLE1#, which is a 3.3V logic level signal.                                    |
| 24 | Key, non existing |             |                         |                 |   |
| 25 | Key, non existing |             |                         |                 |   |
| 26 | Key, non existing |             |                         |                 |   |

|    |                   |                   |                      |           |  |
|----|-------------------|-------------------|----------------------|-----------|--|
| 27 | Key, non existing |                   |                      |           |  |
| 28 | Key, non existing |                   |                      |           |  |
| 29 | Key, non existing |                   |                      |           |  |
| 30 | Key, non existing |                   |                      |           |  |
| 31 | Key, non existing |                   |                      |           |  |
| 32 | Bottom            | UART_RXD          | 1.8V input to M.2    | Bluetooth | For Bluetooth UART interface: BT_UART_RXD<br>Connected to 1YN module, pin 2  |
| 33 | Top               | GND               |                      | Always    | Connect to ground.   |
| 34 | Bottom            | UART_RTS          | 1.8V output from M.2 | Bluetooth | For Bluetooth UART interface: BT_UART_RTS<br>Connected to 1YN module, pin 5  |
| 35 | Top               | PERp0             |                      |           | Not connected.   |
| 36 | Bottom            | UART_CTS          | 1.8V input to M.2    | Bluetooth | For Bluetooth UART interface: BT_UART_CTS<br>Connected to 1YN module, pin 4  |
| 37 | Top               | PERn0             |                      |           | Not connected.   |
| 38 | Bottom            | VENDOR<br>DEFINED | 1.8V I/O             | Optional  | Connected to 1YN module, signal WL_GPIO_2, pin 17<br><br><b>Note: this pin must NOT be driven high during powerup. Since there is no special reason for connecting to WL_GPIO_2, leave this pin unconnected/open.</b>  |
| 39 | Top               | GND               |                      | Always    | Connect to ground.   |
| 40 | Bottom            | VENDOR<br>DEFINED | 1.8V I/O             | Optional  | Connected to 1YN module, signal WL_GPIO_1, pin 18<br><br>For Wi-Fi SDIO interface: with firmware and driver support this can be WL_DEV_WAKE_L<br><br><b>Note: this pin must NOT be driven high during and shortly after a reset cycle (controlled by WL_REG_ON) because that can place the chipset in a special debug mode. It is recommended to have an external 1K ohm pull-down resistor to ground on this pin, just to make sure the signal is low during and shortly after a reset cycle.</b> |
| 41 | Top               | PETp0             |                      |           | Not connected.   |
| 42 | Bottom            | VENDOR<br>DEFINED | 1.8V input to M.2    | Bluetooth | For Bluetooth UART interface: BT_DEV_WAKE_L<br>Connected to 1YN module, pin 39   |
| 43 | Top               | PETn0             |                      |           | Not connected.   |
| 44 | Bottom            | COEX3             |                      |           | Not connected.   |
| 45 | Top               | GND               |                      | Always    | Connect to ground.   |
| 46 | Bottom            | COEX_TXD          |                      |           | Not connected.   |
| 47 | Top               | REFCLKp0          |                      |           | Not connected.   |
| 48 | Bottom            | COEX_RXD          |                      |           | Not connected.   |
| 49 | Top               | REFCLKn0          |                      |           | Not connected.   |
| 50 | Bottom            | SUSCLK            | 3.3V input to M.2    | Always    | External sleep clock input (32.768kHz)<br>Connected to 1YN module, via buffer, signal LPO_IN, pin 37   |
| 51 | Top               | GND               |                      | Always    | Connect to ground.   |
| 52 | Bottom            | PERST0#           |                      |           | Not connected.   |
| 53 | Top               | CLKREQ0#          |                      |           | Not connected.   |
| 54 | Bottom            | W_DISABLE2#       | 3.3V input to M.2    | Always    | Connected to 1YN module, via buffer, signal BT_REG_ON, pin 14<br>BT_REG_ON, High = BT part of module enabled/internally powered, Low = BT disabled/powered down  |

|    |        |                      |                   |          |   |
|----|--------|----------------------|-------------------|----------|---|
| 55 | Top    | PEWAKE0#             |                   |          | Not connected.  |
| 56 | Bottom | W_DISABLE1#          | 3.3V input to M.2 | Always   | Connected to 1YN module, via buffer, signal WL_REG_ON, pin 28<br>WL_REG_ON, High = Wi-Fi part of module enabled/internally powered, Low = Wi-Fi disabled/powered down |
| 57 | Top    | GND                  |                   | Always   | Connect to ground.  |
| 58 | Bottom | I2C_SDA              |                   |          | Not connected.  |
| 59 | Top    | Reserved             |                   |          | Not connected.  |
| 60 | Bottom | I2C_CLK              |                   |          | Not connected.  |
| 61 | Top    | Reserved             |                   |          | Not connected.  |
| 62 | Bottom | ALERT#               |                   |          | Not connected.  |
| 63 | Top    | GND                  |                   | Always   | Connect to ground.  |
| 64 | Bottom | RESERVED             |                   | Optional | Optional supply voltage input for control and data signal voltage level. Apply a stable, low-noise, 3.3V / 100mA supply to set 3.3V voltage level on all signals.     |
| 65 | Top    | Reserved             |                   |          | Not connected.  |
| 66 | Bottom | UIM_SWP              |                   |          | Not connected.  |
| 67 | Top    | Reserved             |                   |          | Not connected.  |
| 68 | Bottom | UIM_POWER_SNK        |                   |          | Not connected.  |
| 69 | Top    | GND                  |                   | Always   | Connect to ground.  |
| 70 | Bottom | UIM_POWER_SRC/GPIO_1 |                   |          | Not connected.  |
| 71 | Top    | Reserved             |                   |          | Not connected.  |
| 72 | Bottom | 3.3 V                |                   | Always   | Power supply input. Connect to stable, low-noise 3.3V supply.   |
| 73 | Top    | Reserved             |                   |          | Not connected.  |
| 74 | Bottom | 3.3 V                |                   | Always   | Power supply input. Connect to stable, low-noise 3.3V supply.   |
| 75 | Top    | GND                  |                   | Always   | Connect to ground.  |

### 3.5 VDDIO Override Feature

The M.2 standard specifies 1.8V logic level on several of the data and control signals. It is possible to override the voltage level for the 1.8V signals via pin 64. Apply a 3.3V / 100 mA supply to pin 64 in order to get 3.3V voltage level on all data and control signals.

### 3.6 SDIO Interface

The SDIO interface conforms to the SDIO v3.0 specification, including the UHS-I modes, and is backward compatible with SDIO v2.0.

| SDIO bus speed modes | Max SDIO clock frequency | Max bus speed | Signaling voltage according to M.2 specification | Supported in 3.3V VDDIO Override Mode |
|----------------------|--------------------------|---------------|--|---------------------------------------|
| DS (Default speed)   | 25 MHz                   | 12.5 MByte/s  | 1.8 V  | Yes                                   |
| HS (High speed)      | 50 MHz                   | 25 MByte/s    | 1.8 V  | Yes                                   |
| SDR12                | 25 MHz                   | 12.5 MByte/s  | 1.8 V  | No                                    |
| SDR25                | 50 MHz                   | 25 MByte/s    | 1.8 V  | No                                    |
| DDR50                | 50 MHz                   | 50 MByte/s    | 1.8 V  | No                                    |

### 3.7 Test Points

There are some test points that can be of interest to probe for debugging purposes, as illustrated in the picture below.

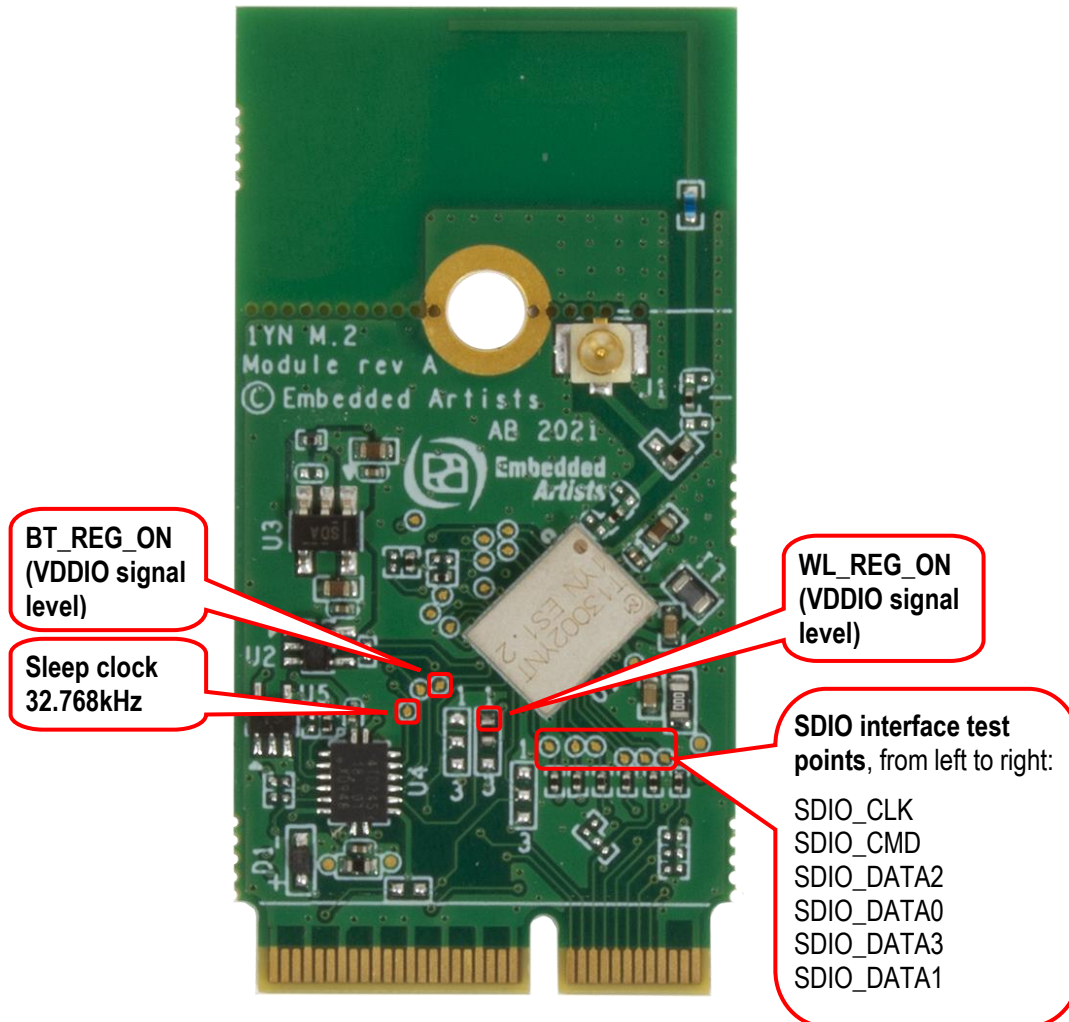


Figure 4 – 1YN M.2 Module Test Points

### 3.8 Current Consumption Measurements

It is possible to measure the currents of the power supplies to the 1YN module, VBAT and VDDIO. VBAT is the 3.3V that is supplied to the M.2 interface and VDDIO is an on-board generated 1.8V. VDDIO is generated from the supplied 3.3V. If the supply voltage (3.3V) to the M.2 module is measured it will be both the VBAT and VDDIO currents that is measured. By measuring currents at the illustrated points below it is possible to measure VBAT and VDDIO independently.

Note that zero ohm resistors are mounted by default. Select a series resistor with as low resistance as possible to keep the voltage drop to a minimum. Keep the drop below 100mV. VBAT can be up to 1 Amp in peak which means that maximum series resistance is 100 milliOhm for the VBAT resistor. For VDDIO the current is lower so a 1 ohm resistor can be a suitable value.

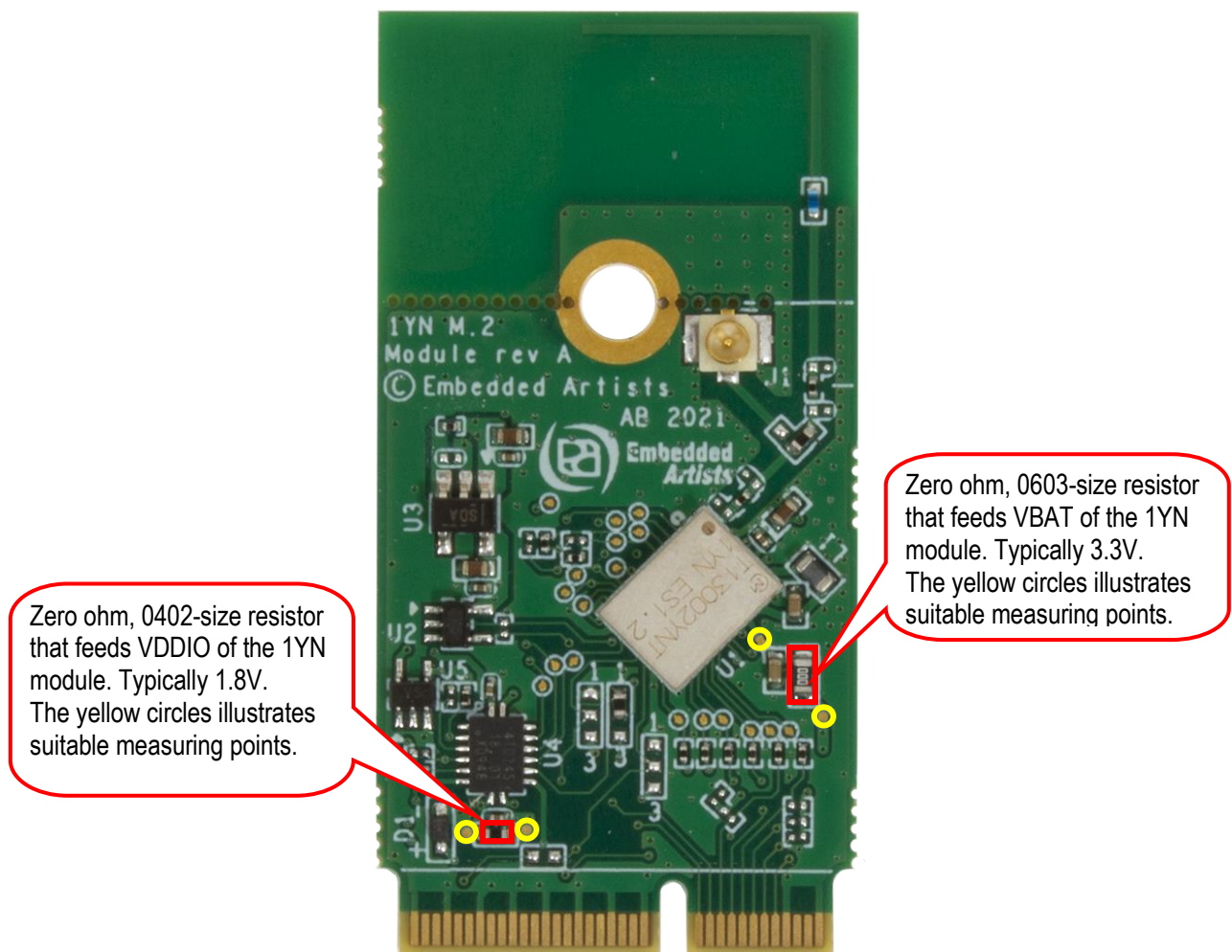


Figure 5 – Current Measurement

## 4 Antenna

This chapter addresses the antenna side of the module. There is an on-board, reference certified pcb trace antenna. This can be used for testing/evaluation purposes, but also for the final product. Also, for testing and evaluation purposes, it is possible to disconnect the on-board antenna and instead use an u.fl. connector to connect an external antenna.

### 4.1 Mounting and Clearance

Ideally, arrange the M.2 module so that the antenna is located at a corner of the product. Keep plastic case (i.e., non-metallic) away from the antenna area with at least 5 mm clearance (in all directions). Also keep any metal elements (e.g., connectors, battery, etc.) away from the antenna area with at least 5 mm clearance (in all directions). Keep a clearance area under and above the antenna area of at least 7.5mm , both under and over the PCB.

Human hands or body parts should be kept away (in the normal use case) from the antenna area.

The ground hole in the middle shall be grounded. Use a metal stand-off according to M.2 standard (height suitable for selected M.2 connector) and use metal screw to create a proper ground connection.

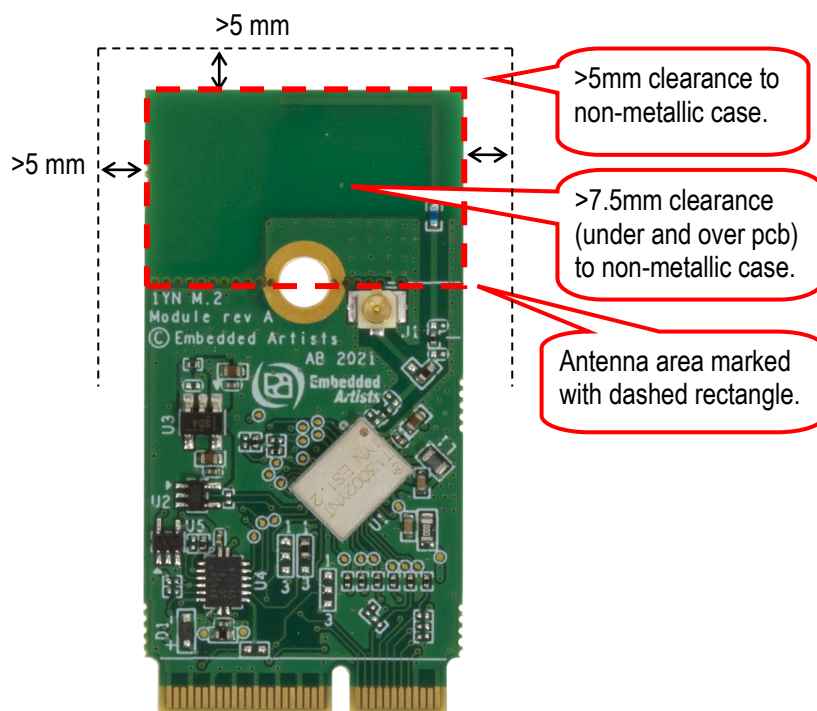


Figure 6 – M.2 Module Clearance Area

### 4.2 Antenna Connector

The M.2 standard specifies a 1.5 mm outer ring diameter male connector, which is compatible with the Murata MSC and IPEX MHF4 connector specifications. This connector is not used since our M.2 modules also targets industrial users, where the Hirose U.FL. connector standard is more commonly used. U.FL. is compatible with the IPEX MHF1 connector specification.

### 4.3 Overriding on-board PCB Trace Antenna

Per default, the on-board PCB trace antenna is used for the Wi-Fi and Bluetooth interface. The antenna connection from the 1YN module can be redirected to the U.FL. connector by just moving one zero ohm 0402 series resistor, see illustration below. The on-board trace antenna can be left as-is, or the antenna part can be snapped-off.

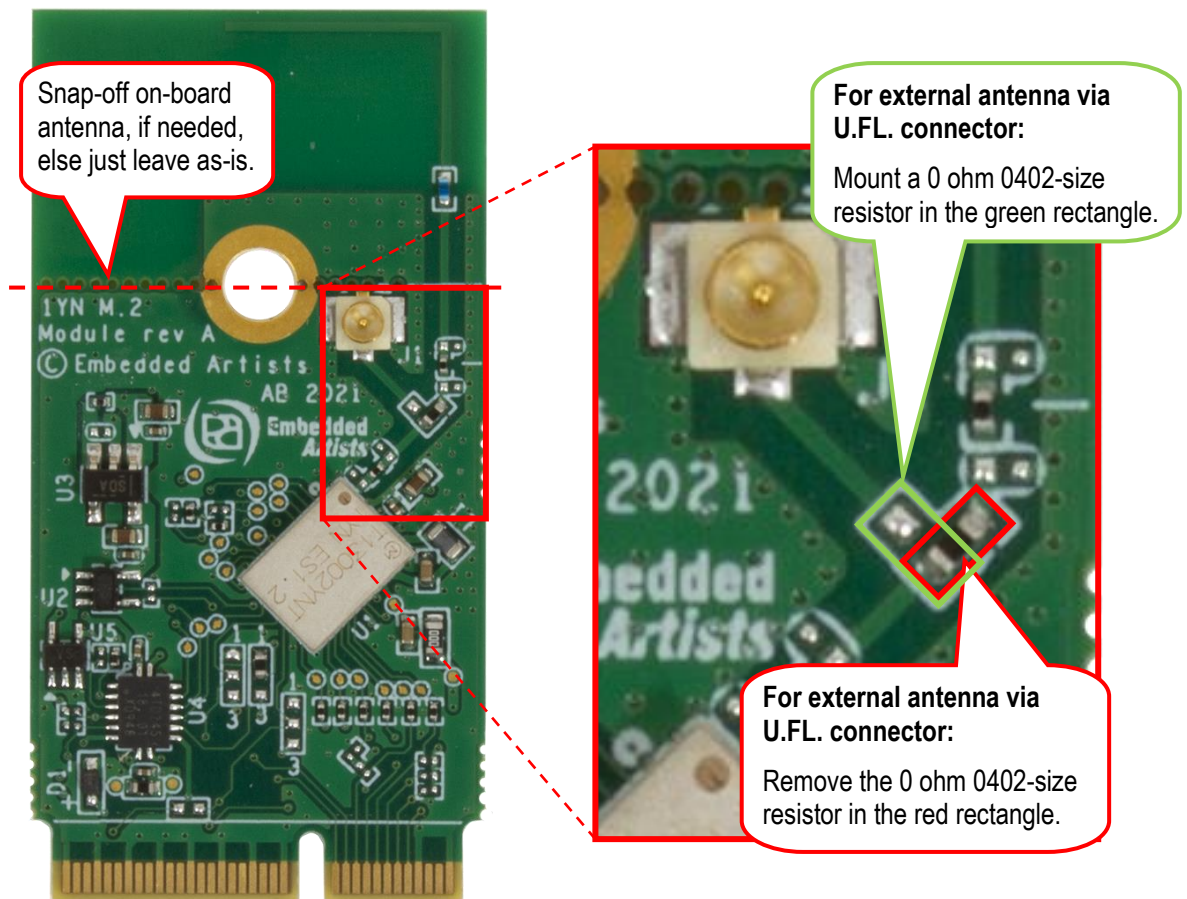


Figure 7 – Rework to Connect U.FL. Connector

#### 4.4 On-board Trace Antenna Performance

The on-board pcb trace antenna type is monopole. The 1YN M.2 module has been measured both standalone and mounted on the iMX OEM Carrier Board (which is a typical carrier board design).

The table below lists total efficiency:

| Condition                                     | Frequency [MHz] |      |      | Average dB | Average % |
|---|-----------------|------|------|------------|-----------|
|   | 2400            | 2442 | 2484 |            |           |
| M.2 module mounted on reference carrier board | -2.5            | -2.3 | -2.2 | -2.3       | 58.4      |
| M.2 module standalone                         | -2.9            | -2.8 | -2.7 | -2.8       | 52.3      |

The table below lists peak gain:

| Condition                                     | Frequency [MHz] |      |      | Max dBi |
|---|-----------------|------|------|---------|
|   | 2400            | 2442 | 2484 |         |
| M.2 module mounted on reference carrier board | 0.0             | -0.1 | 0.1  | 0.1     |
| M.2 module standalone                         | -0.5            | -0.1 | 0.2  | 0.2     |

##### 4.4.1 1YN M.2 Module Mounted on iMX OEM Carrier Board

The 3D directivity measurements are presented below for the 2.4 GHz bands when the 1YN M.2 module is mounted on the iMX OEM Carrier Board.

@2442MHz

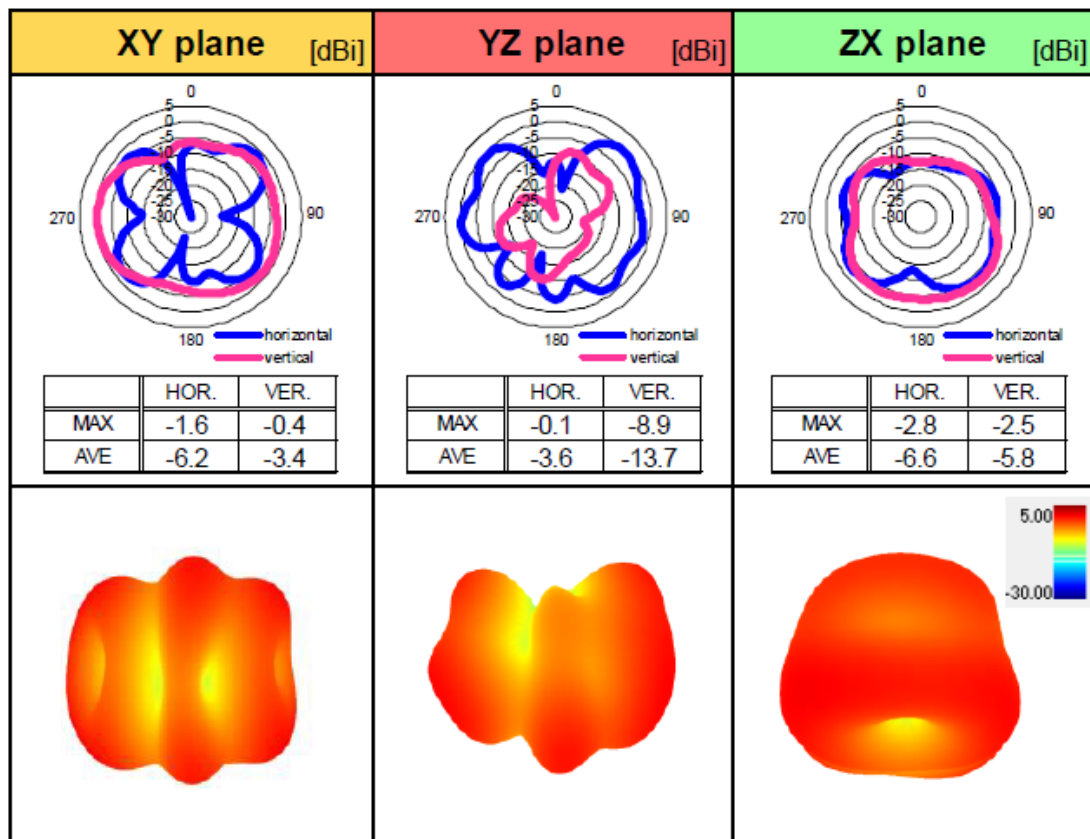


Figure 8 – 3D Directivity Measurements in 2.4 GHz Band (1YN M.2 Mounted on iMX OEM Carrier Board)

## 2D Directional indication

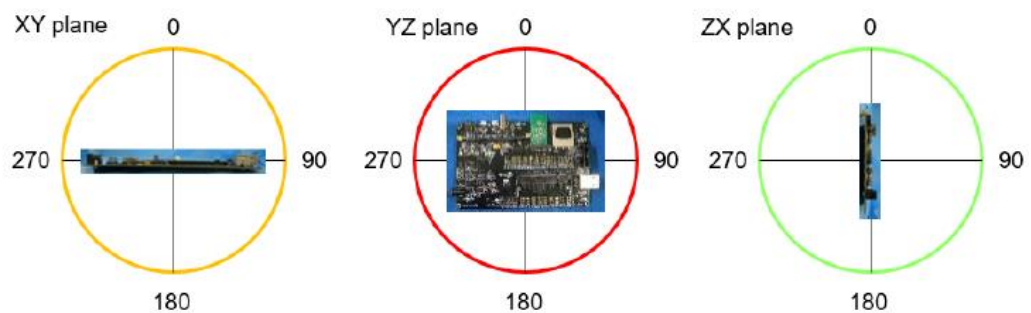


Figure 9 – 3D Directivity Measurements Plane Orientations

The pictures below illustrates the return loss, efficiency and directivity when the 1YN M.2 module is mounted on the iMX OEM Carrier Board.

## <Return Loss>

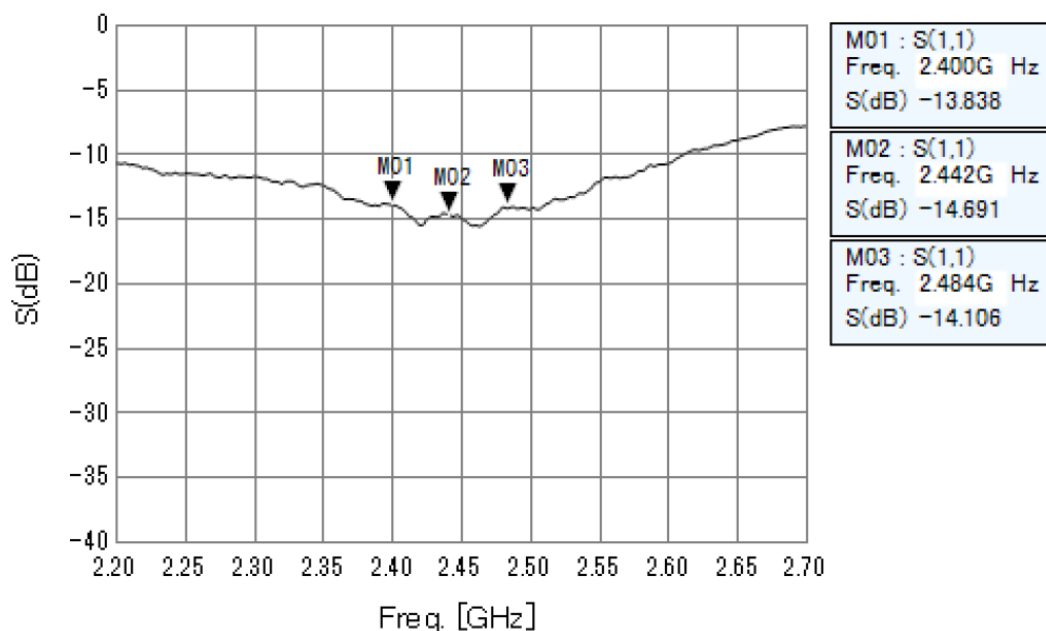


Figure 10 – Return Loss for 1YN M.2 Module Mounted on iMX OEM Carrier Board

## <Efficiency>

|                        |      |          |      |          |       |          |      | [dBi]               | [dB] |
|------------------------|------|----------|------|----------|-------|----------|------|---------------------|------|
| LINEAR<br>POLARIZATION |      | XY-plane |      | YZ-plane |       | ZX-plane |      | Total<br>Efficiency |      |
|                        |      | hor.     | ver. | hor.     | ver.  | hor.     | ver. |                     |      |
| 2400 MHz               | MAX. | -2.2     | -0.2 | 0.0      | -9.3  | -3.2     | -2.3 | -2.5                |      |
|                        | AVE. | -6.8     | -3.2 | -3.6     | -13.8 | -7.0     | -5.6 |                     |      |
| 2442 MHz               | MAX. | -1.6     | -0.4 | -0.1     | -8.9  | -2.8     | -2.5 | -2.3                |      |
|                        | AVE. | -6.2     | -3.4 | -3.6     | -13.7 | -6.6     | -5.8 |                     |      |
| 2484 MHz               | MAX. | -1.2     | -0.9 | 0.1      | -8.7  | -2.6     | -2.6 | -2.2                |      |
|                        | AVE. | -5.8     | -3.7 | -3.6     | -13.8 | -6.3     | -6.0 |                     |      |

Figure 11 – Efficiency for 1YN M.2 Module Mounted on iMX OEM Carrier Board

## <Directivity>

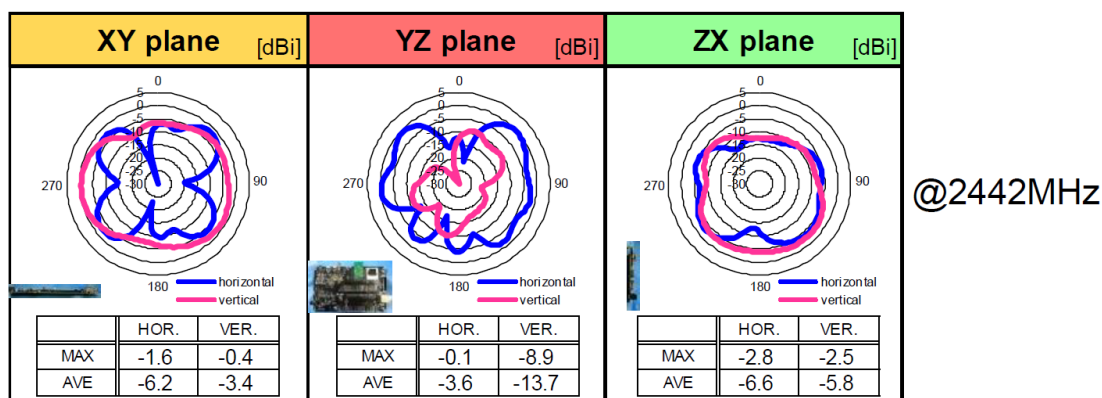


Figure 12 – Directivity for 1YN M.2 Module Mounted on iMX OEM Carrier Board

#### 4.4.2 1YN M.2 Module Standalone

The 3D directivity measurements are presented below for the 2.4 GHz when the 1YN M.2 module is standalone.

@2442MHz

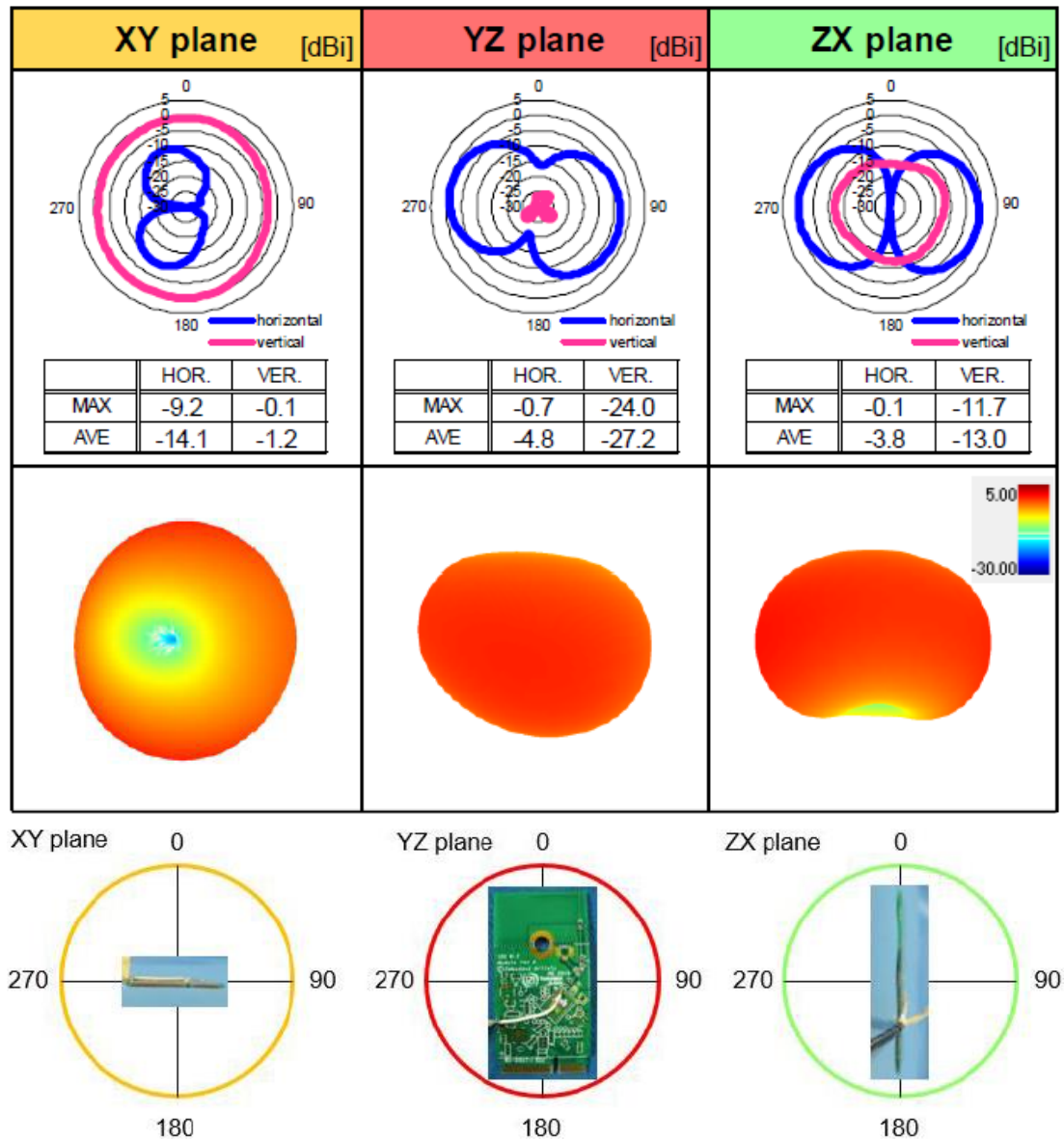


Figure 13 – 3D Directivity Measurements Plane Orientations

The pictures below illustrates the return loss, efficiency and directivity when the 1YN M.2 module is standalone.

## <Return Loss>

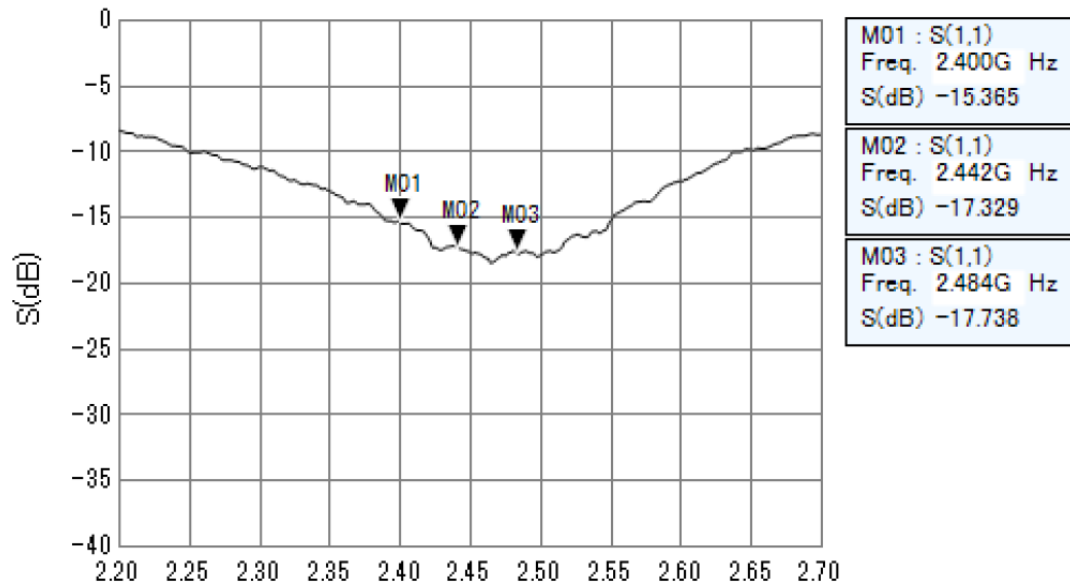


Figure 14 – Return Loss for 1YN M.2 Module Standalone

## <Efficiency>

| LINEAR POLARIZATION |      | XY-plane |      | YZ-plane |       | ZX-plane |       | Total Efficiency |
|---------------------|------|----------|------|----------|-------|----------|-------|------------------|
|                     |      | hor.     | ver. | hor.     | ver.  | hor.     | ver.  |                  |
| 2400 MHz            | MAX. | -9.5     | -0.5 | -0.7     | -23.5 | -0.5     | -11.4 | -2.9             |
|                     | AVE. | -14.2    | -1.3 | -4.7     | -27.7 | -4.0     | -12.9 |                  |
| 2442 MHz            | MAX. | -9.2     | -0.1 | -0.7     | -24.0 | -0.1     | -11.7 | -2.8             |
|                     | AVE. | -14.1    | -1.2 | -4.8     | -27.2 | -3.8     | -13.0 |                  |
| 2484 MHz            | MAX. | -9.4     | 0.2  | -0.4     | -23.6 | -0.2     | -11.9 | -2.7             |
|                     | AVE. | -14.3    | -1.0 | -4.8     | -27.4 | -3.7     | -13.1 |                  |

Figure 15 – Efficiency for 1YN M.2 Module Standalone

## <Directivity>

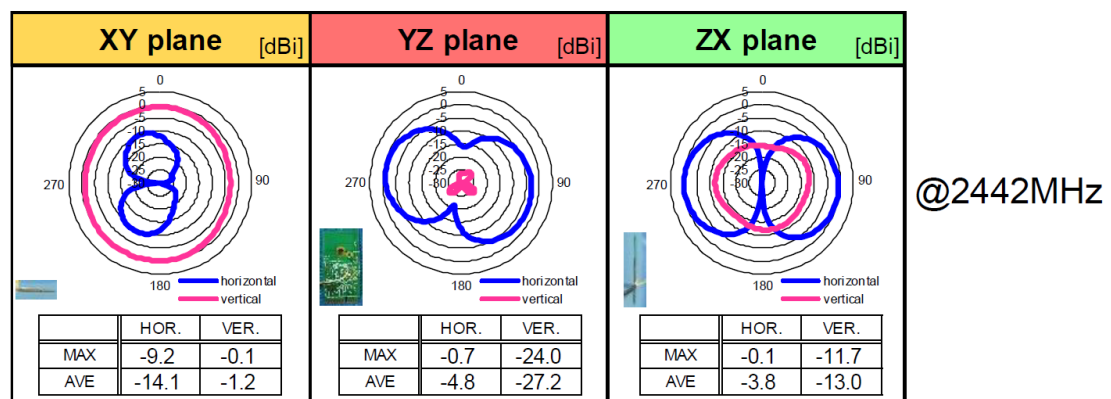


Figure 16 – Directivity for 1YN M.2 Module Standalone

## 5 Software and Support

This chapter contains information about software and support.

### 5.1 Software Driver

The CYW43439 chipset do not contain any persistent software. A firmware image must be downloaded by the host at start-up. This is the responsibility of the operating system driver.

There are three different cases, depending on which host processor is used:

1. **Embedded Artists' Computer-on-Modules, (u)COM, as host processor**

Embedded Artists' Linux BSPs and SDKs for the different (u)COM board contains all drivers available and pre-configured. Everything has been tested and works out-of-the-box on the different iMX Developer's Kits.

| iMX Developer's Kit     | 1YN M.2 support   |
|-------------------------|---|
| iMX93 uCOM              | EA Linux BSP v6.6.23 and later<br><b>Note:</b> See section 7.1 for special operation notes. |
| iMX8M Mini uCOM         | EA Linux BSP v5.10.35 and later   |
| iMX8M Nano uCOM         | EA Linux BSP v5.10.35 and later   |
| iMX8M COM               | EA Linux BSP v5.10.35 and later   |
| iMX7 Dual COM           | EA Linux BSP v5.10.35 and later   |
| iMX7 Dual uCOM          | EA Linux BSP v5.10.35 and later   |
| iMX7ULP uCOM            | No  |
| iMX 6 Quad COM          | EA Linux BSP v5.10.35 and later   |
| iMX 6 DualLite COM      | EA Linux BSP v5.10.35 and later   |
| iMX 6 SoloX COM         | EA Linux BSP v5.10.35 and later   |
| iMX 6 UltraLite/ULL COM | EA Linux BSP v5.10.35 and later   |
| iMX RT1176 uCOM         | Not yet available   |
| iMX RT1166 uCOM         | Not yet available   |
| iMX RT1064 uCOM         | Not yet available   |
| iMX RT1062 OEM          | Not yet available   |

2. **Other i.MX based, for example NXP's EVKs**

Murata has created documentation how to compile the Linux kernel for the NXP EVKs  
<https://wireless.murata.com/products/rf-modules-1/wi-fi-bluetooth-for-nxp-i-mx.html#Linux>

3. **Non-i.MX host processor**

There is no ready-to-go driver exist. Contact Murata to check driver availability on the hardware platform used.

### 5.2 Support

Embedded Artists supports customers that use our M.2 module in combination with Embedded Artists' Computer-on-Modules, (u)COM, based on NXP's i.MX RT/6/7/8 families.

For other platforms, support is provided by Murata via their Community Support Forum:  
<https://community.murata.com/s/topic/0TO5F0000002TLWWA2/connectivity-modules>

## 6 Regulatory

The Murata 1YN module is reference certified. See the LBEE5KL1YN datasheet from Murata for details.

### 6.1 European Union Regulatory Compliance

**EUROPEAN DECLARATION OF CONFORMITY** (Simplified DoC per Article 10.9 of the Radio Equipment Directive 2014/53/EU)

This apparatus, namely 1YN M.2 module (pn EAR00389) conforms to the Radio Equipment Directive (RED) 2014/53/EU. The full EU Declaration of Conformity for this apparatus can be found at this location: <https://www.embeddedartists.com/products/1xk-m-2-module/>, see document *1YN M.2 module Declaration of Conformity*.

The following information is provided per Article 10.8 of the Radio Equipment Directive 2014/53/EU:

(a) Frequency bands in which the equipment operates.

(b) The maximum RF power transmitted.

| PN       | RF Technology          | (a) Frequency Ranges (EU) | (b) Max Transmitted Power |
|----------|------------------------|---------------------------|---------------------------|
| EAR00389 | Bluetooth BR/EDR/LE    | 2400 MHz – 2484 MHz       | 0.2 dBm                   |
| EAR00389 | Wi-Fi IEEE 802.11b/g/n | 2400 MHz – 2484 MHz       | 0.2 dBm                   |

The 1YN M.2 module complies with the Directive 2011/65/EU (EU RoHS 2) and its amendment Directive (EU) 2015/863 (EU RoHS 3).

## 7 Notes

This chapter contains information about special notes about the operation of the 1YN M.2 board.

### 7.1 1YN M.2 and iMX93 uCOM Issue

Due to voltage translator circuits on the iMX93 uCOM board, there are unintentional interactions with default 1YM pin states during reset cycles and other voltage translator circuits on the uCOM Carrier Board. To get the 1YN M.2 and iMX93 uCOM board from Embedded Artists working together, two smaller reworks are needed.

**Step #1:** mount a 1 Kohm 04-02 resistor on the 1YN M.2 board, in the location illustrated in the picture below.

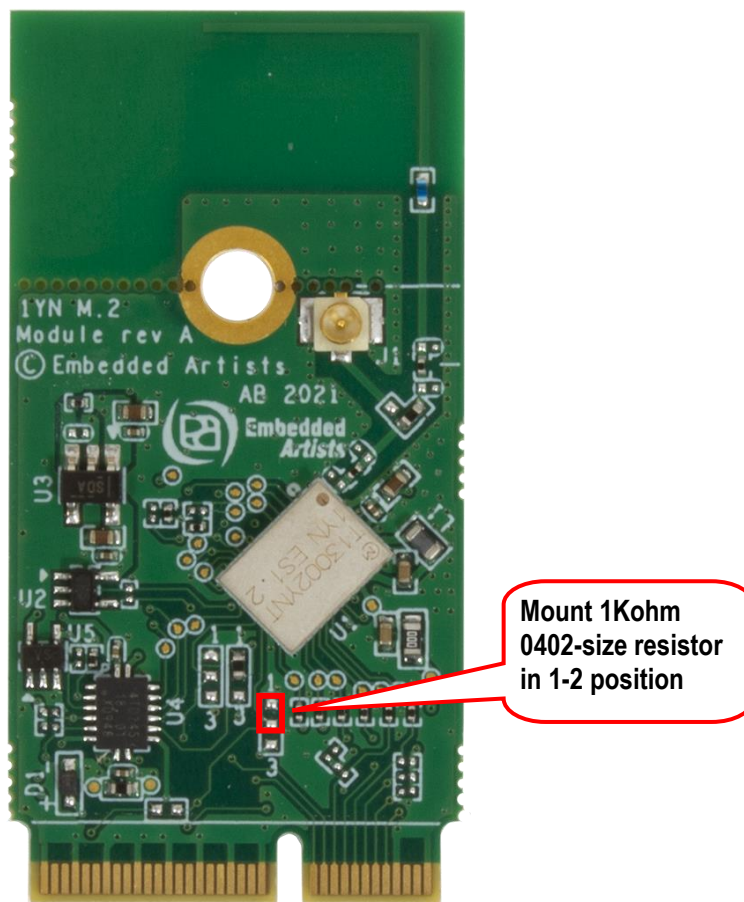


Figure 17 – 1YN M.2 Board Rework

#### Step #2:

Two resistors on the uCOM Carrier Board must be replaced. Note that only uCOM Carrier Boards that are rev B, B1, C, and C1 can be used. Earlier boards from the rev A generation are not compatible and cannot be used.

R22 and R23 are located on the bottom side of the uCOM Carrier Board right under the M.2 connector. The picture below illustrates where to find R22 and R23 on the rev C board. The other board revisions look very similar and the resistors can be found in about the same location on these boards.

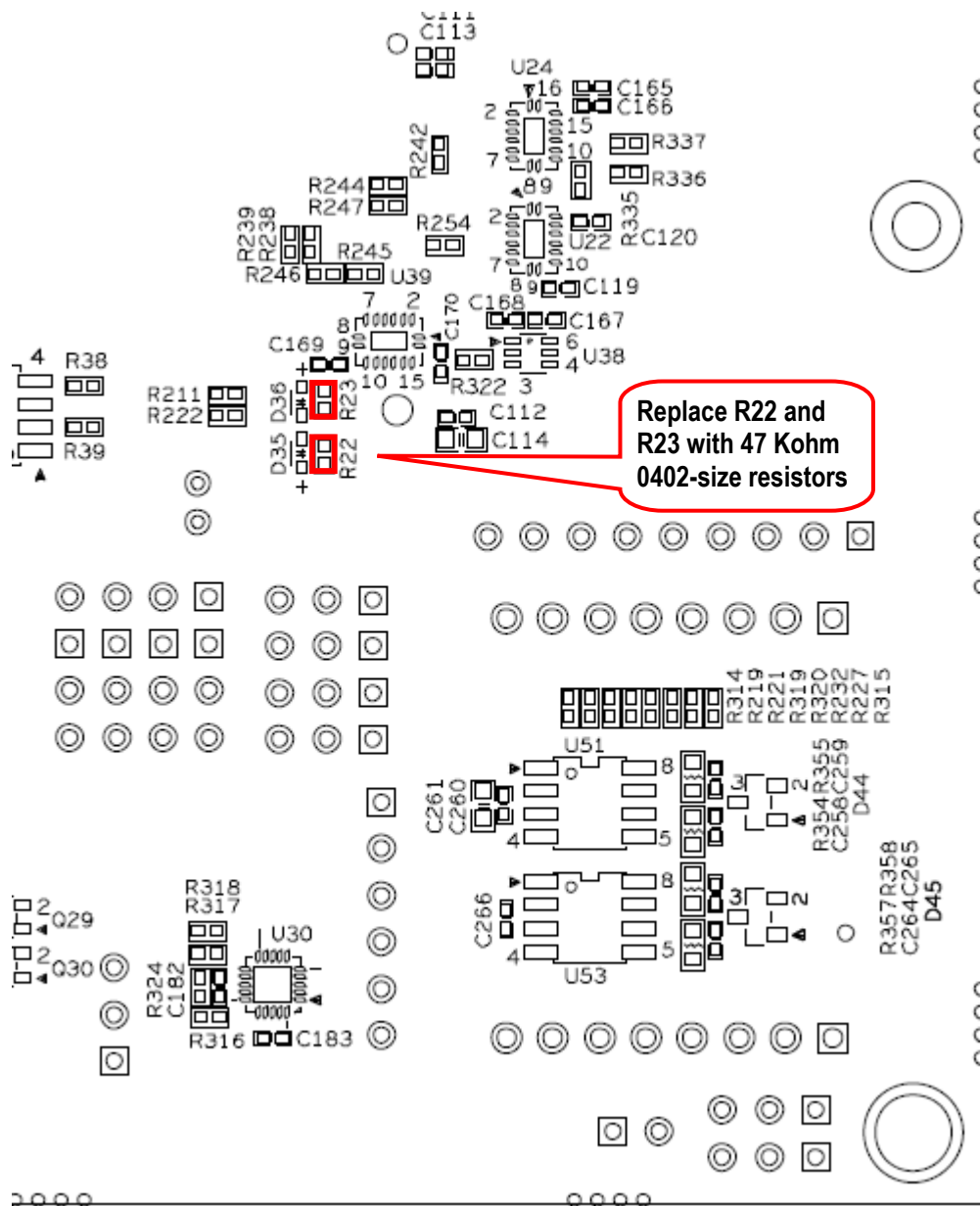


Figure 18 – uCOM Carrier Board Rework on Bottom Side

## 8 Disclaimers

Embedded Artists reserves the right to make changes to information published in this document, including, without limitation, specifications and product descriptions, at any time and without notice. This document supersedes and replaces all information supplied prior to the publication hereof.

Customer is responsible for the design and operation of their applications and products using Embedded Artists' products, and Embedded Artists accepts no liability for any assistance with applications or customer product design. It is customer's sole responsibility to determine whether the Embedded Artists' product is suitable and fit for the customer's applications and products planned, as well as for the planned application and use of customer's third party customer(s). Customers should provide appropriate design and operating safeguards to minimize the risks associated with their applications and products. Customer is required to have expertise in electrical engineering and computer engineering for the installation and use of Embedded Artists' products.

Embedded Artists does not accept any liability related to any default, damage, costs or problem which is based on any weakness or default in the customer's applications or products, or the application or use by customer's third party customer(s). Customer is responsible for doing all necessary testing for the customer's applications and products using Embedded Artists' products in order to avoid a default of the applications and the products or of the application or use by customer's third party customer(s). Embedded Artists does not accept any liability in this respect.

Embedded Artists does not accept any liability for errata on individual components. Customer is responsible to make sure all errata published by the manufacturer of each component are taken note of. The manufacturer's advice should be followed.

Embedded Artists does not accept any liability and no warranty is given for any unexpected software behavior due to deficient components.

Customer is required to take note of manufacturer's specification of used components. Such specifications, if applicable, contain additional information that must be taken note of for the safe and reliable operation.

All Embedded Artists' products are sold pursuant to Embedded Artists' terms and conditions of sale: [http://www.embeddedartists.com/sites/default/files/docs/General\\_Terms\\_and\\_Conditions.pdf](http://www.embeddedartists.com/sites/default/files/docs/General_Terms_and_Conditions.pdf)

No license, express or implied, by estoppel or otherwise, to any intellectual property rights is granted under this document. If any part of this document refers to any third party products or services it shall not be deemed a license grant by Embedded Artists for the use of such third party products or services, or any intellectual property contained therein or considered as a warranty covering the use in any manner whatsoever of such third party products or services or any intellectual property contained therein.

UNLESS OTHERWISE SET FORTH IN EMBEDDED ARTISTS' TERMS AND CONDITIONS OF SALE EMBEDDED ARTISTS DISCLAIMS ANY EXPRESS OR IMPLIED WARRANTY WITH RESPECT TO THE USE AND/OR SALE OF EMBEDDED ARTISTS PRODUCTS INCLUDING WITHOUT LIMITATION IMPLIED WARRANTIES OF MERCHANTABILITY, FITNESS FOR A PARTICULAR PURPOSE (AND THEIR EQUIVALENTS UNDER THE LAWS OF ANY JURISDICTION), OR INFRINGEMENT OF ANY PATENT, COPYRIGHT OR OTHER INTELLECTUAL PROPERTY RIGHT.

UNLESS EXPRESSLY APPROVED IN WRITING BY THE CEO OF EMBEDDED ARTISTS, PRODUCTS ARE NOT RECOMMENDED, AUTHORIZED OR WARRANTED FOR USE IN MILITARY, AIR CRAFT, SPACE, NUCLEAR, LIFE SAVING, OR LIFE SUSTAINING APPLICATIONS, NOR IN PRODUCTS OR SYSTEMS WHERE FAILURE OR MALFUNCTION MAY RESULT IN PERSONAL INJURY, DEATH, OR SEVERE PROPERTY OR ENVIRONMENTAL DAMAGE.

Resale of Embedded Artists' products with provisions different from the statements and/or technical features set forth in this document shall immediately void any warranty granted by Embedded Artists

for the Embedded Artists' product or service described herein and shall not create or extend in any manner whatsoever, any liability of Embedded Artists.

This document as well as the item(s) described herein may be subject to export control regulations. Export might require a prior authorization from national authorities.

### 8.1 Definition of Document Status

**Preliminary** – The document is a draft version only. The content is still under internal review and subject to formal approval, which may result in modifications or additions. Embedded Artists does not give any representations or warranties as to the accuracy or completeness of information included herein and shall have no liability for the consequences of use of such information. The document is in this state until the product has passed Embedded Artists product qualification tests.

**Approved** – The information and data provided define the specification of the product as agreed between Embedded Artists and its customer, unless Embedded Artists and customer have explicitly agreed otherwise in writing.

# Mouser Electronics

Authorized Distributor

Click to View Pricing, Inventory, Delivery & Lifecycle Information:

[Embedded Artists:](#)

[EAR00389](#)