

1DX M.2 Module Datasheet

- 802.11 b/g/n and BT/BLE 4.2
- SDIO 2.0 interface, SDR25@50MHz
- 22 x 44 mm with integrated trace antenna



*Get Up-and-Running Quickly and
Start Developing Your Application On Day 1!*

Embedded Artists AB

Jörgen Ankersgatan 12
211 45 Malmö
Sweden

<http://www.EmbeddedArtists.com>

Copyright 2019 © Embedded Artists AB. All rights reserved.

No part of this publication may be reproduced, transmitted, transcribed, stored in a retrieval system, or translated into any language or computer language, in any form or by any means, electronic, mechanical, magnetic, optical, chemical, manual or otherwise, without the prior written permission of Embedded Artists AB.

Disclaimer

Embedded Artists AB makes no representation or warranties with respect to the contents hereof and specifically disclaim any implied warranties or merchantability or fitness for any particular purpose. The information has been carefully checked and is believed to be accurate, however, no responsibility is assumed for inaccuracies.

Information in this publication is subject to change without notice and does not represent a commitment on the part of Embedded Artists AB.

Feedback

We appreciate any feedback you may have for improvements on this document.

Trademarks

All brand and product names mentioned herein are trademarks, services marks, registered trademarks, or registered service marks of their respective owners and should be treated as such.

Table of Contents

1	Document Revision History	4
2	Introduction	5
2.1	Benefits of Using an M.2 Module to get Wi-Fi/BT Connectivity	5
2.2	More M.2 Related Information	5
2.3	ESD Precaution and Handling	5
2.4	Product Compliance	5
3	Specification	6
3.1	Power Up Sequence	7
3.2	External Sleep Clock	7
3.3	Mechanical Dimensions	7
3.4	M.2 Pinning	9
3.5	Test Points	12
3.6	VDDIO Override Feature	12
4	Antenna	13
4.1	Mounting and Clearance	13
4.2	Overriding PCB Trace Antenna	14
4.3	On-board Trace Antenna Performance	15
4.3.1	1DX M.2 Module Mounted on iMX OEM Carrier Board	15
4.3.2	1DX M.2 Module Standalone	18
5	Regulatory	20
6	Disclaimers	21
6.1	Definition of Document Status	22

1 Document Revision History

<i>Revision</i>	<i>Date</i>	<i>Description</i>
PA1	2019-04-16	First version.

2 Introduction

This document is a datasheet that specifies and describes the *1DX M.2 module* mainly from a hardware point of view. Software related issues, like the Linux and WICED drivers, are not addressed. There are separate documents for that.

2.1 Benefits of Using an M.2 Module to get Wi-Fi/BT Connectivity

There are several benefit to use an *M.2 module* to add connectivity to an embedded design:

- Drop-in, certified solution!
- Modular and flexible approach to evaluate different Wi-Fi/BT solutions - with different trade-offs around performance, cost, power consumption, longevity, etc.
- Access to maintained software drivers (Linux and WICED) with responsive support from Murata.
- Supported by Embedded Artists' Developer's Kits for i.MX RT/6/7/8 development, including advanced debugging support on carrier boards
- One component to buy, instead of 50+
- No RF expertise is required
- Developed in close collaboration with Murata and Cypress

2.2 More M.2 Related Information

For more information about the M.2 standard and Embedded Artists' adaptation, see: [M.2 Primer](#)

For more general information about the M.2 standard, see: <https://en.wikipedia.org/wiki/M.2>

The official M.2 specification (PCI Express M.2 Specification) is available from: www.pcisig.com

2.3 ESD Precaution and Handling

Please note that the M.2 module come without any case/box and all components are exposed for finger touches – and therefore extra attention must be paid to ESD (electrostatic discharge) precaution, for example use of static-free workstation and grounding strap. Only qualified personnel shall handle the product.

Make it a habit always to first touch the mounting hole (which is grounded) for a few seconds with both hands before touching any other parts of the boards. That way, you will have the same potential as the board and therefore minimize the risk for ESD.

In general touch as little as possible on the boards in order to minimize the risk of ESD damage. The only reasons to touch the board are when mounting/unmounting it on a carrier board.

Note that Embedded Artists does not replace modules that have been damaged by ESD.



2.4 Product Compliance

Visit Embedded Artists' website at http://www.embeddedartists.com/product_compliance for up to date information about product compliances such as CE, RoHS2, Conflict Minerals, REACH, etc.

3 Specification

This chapter lists some of the more important characteristics of the M.2 module, but it is not a full specification of performance and timing. The main component in the design is Murata's 1DX module (full part number: LBEE5KL1DX), which in turn is based around Cypress CYW4343W chipset.

For a full specification, see on Murata's 1DX Module (LBEE5KL1DX) see Murata's 1DX product page (<https://wireless.murata.com/eng/type-1dx.html>) and the 1DX datasheet (<https://wireless.murata.com/datasheet?/RFM/data/lbee5kl1dx.pdf>).

Module / Chipset	
Murata module	LBEE5KL1DX
Chipset	Cypress CYW4343W

Wi-Fi	
Standards	802.11b/g/n
Network	AP and STA dual mode
Frequency	2.4GHz band
Data rates	11, 54, 65 Mbps
Host interface	SDIO 2.0, SDR25@50MHz

Bluetooth	
Standards	4.2 BR/EDR/LE
Power Class	Class 1
Host interface	4-wire UART@3MBaud
Audio interface	PCM for audio

Powering			
Supply voltage to M.2 module	Min	Typ	Max
Note: Do not exceed maximum voltage. Module will be permanently damaged above this limit!	-0.5V absolute min	3.3V	3.6V
	3.0V operating		Note that LBEE5KL1DX module specification is 4.8V, but other components on the M.2 module limits the maximum voltage
	3.2V RF specification		
Receive mode current (WLAN)	47 mA typical		
Transmit mode current (WLAN)	320 mA typical, 370 mA maximum		

Environmental Specification	
Operational Temperature	-30 to +70 degrees Celsius
Specification Temperature (for Wi-Fi/BT communication)	-10 to +55 degrees Celsius

Storage Temperature	-40 to +85 degrees Celsius
Relative Humidity (RH), operating and storage	10 - 90% non-condensing

3.1 Power Up Sequence

The supply voltage shall not rise (10 - 90%) faster than 40 microseconds and not slower than 100 milliseconds.

Signals WL_REG_ON or BT_REG_ON must be held low for at least 700 microseconds after supply voltage has reached specification level before pulled high. 2 clock cycles of the 32.678kHz clock must also have passed before any of the signals is pulled high. These clock cycles will typically occur during the 700 microseconds but if the clock signal has a long delay during power-up, the 700 microsecond period can be extended.

3.2 External Sleep Clock

The sleep clock signals can be applied to a powered and unpowered M.2 module.

Clock Specification	
Frequency	32.768 kHz
Frequency accuracy	±200 ppm
Duty cycle	30 - 70%
Clock jitter	<10000 ppm
Voltage level	3.3V logic, according to M.2 standard

3.3 Mechanical Dimensions

The M.2 module is of type: 2230-S3-E according to the M.2 nomenclature. This means width 22 mm, length 30mm (without trace antenna), top side component height 1.5 mm and key-E connector. The table below lists the different dimensions and weight.

M.2 Module Dimension	Value (±0.15 mm)	Unit
Width	22	mm
Height, with pcb trace antenna	44	mm
Height, without pcb trace antenna	30	mm
PCB thickness	0.8	mm
Maximum component height on top side	1.5	mm
Maximum component height on bottom side	0	mm
Ground hole diameter	3.5	mm
Plating around ground hole, diameter	5.5	mm
Module weight	1.5 ±0.5 gram	gram

Embedded Artists has added a non-standard feature to the 2230 M.2 modules designed together with Murata and Cypress. The pictures below illustrate how the standard module size has been extended by 14 mm in the length direction in order to include a PCB trace antenna.

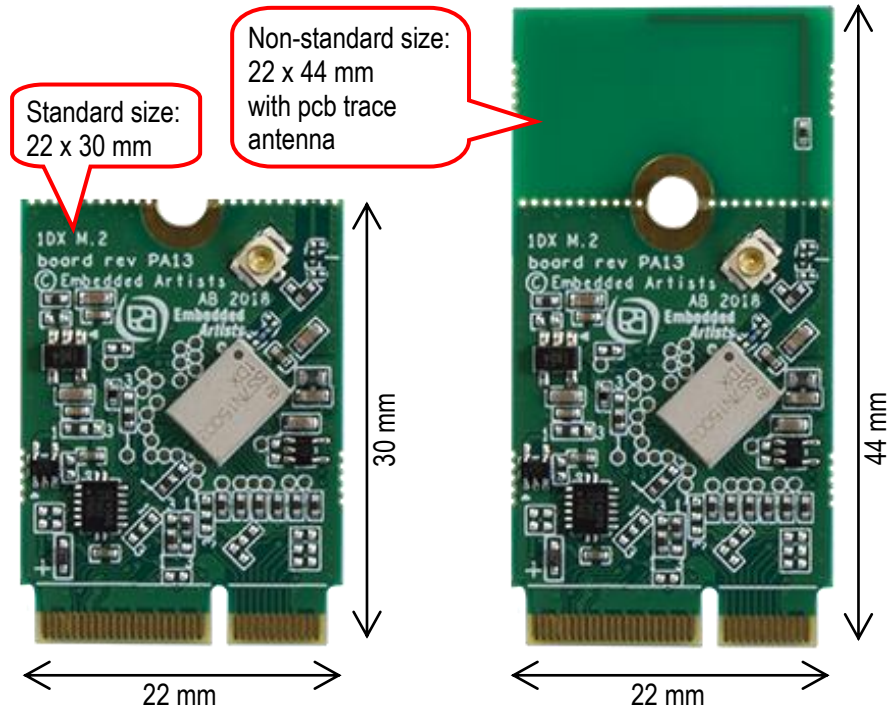


Figure 1 – M.2 Module with, and without, PCB Trace Antenna

The picture below gives dimensions for the grounded center (half) hole and the u.fl. antenna connector.

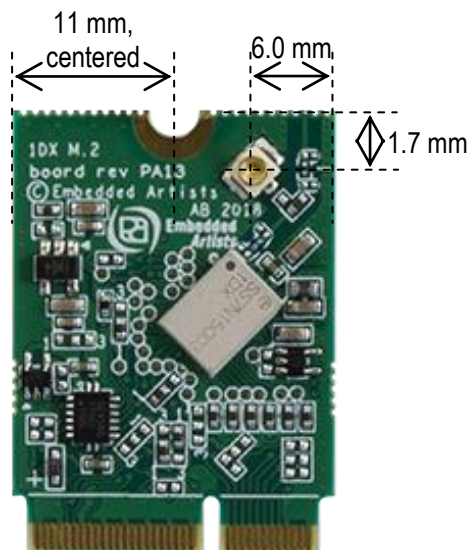


Figure 2 – M.2 Module With, and Without, Trace Antenna

3.4 M.2 Pinning

This section presents the pinning used for the M.2 module. It is essentially M.2 Key-E compliant with enhancements to support additional debug signals and 3.3V VDDIO override. The pin assignment for specific control and debug signals has been jointly defined by Embedded Artists, Murata and Cypress.

The picture below illustrates the edge pin numbering. It starts on the right edge and alternates between top and bottom side. The removed pads in the keying notch counts (but as obviously non-existing).

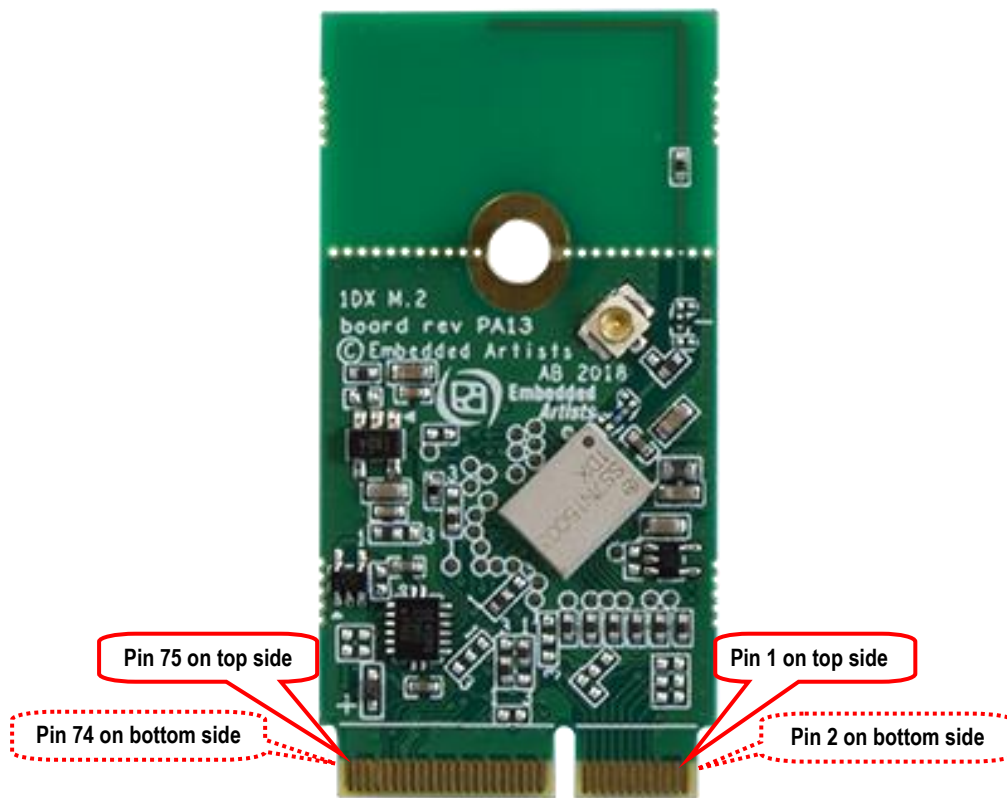


Figure 3 – M.2 Module Pin Numbering

The Wi-Fi interface uses the SDIO interface. The Bluetooth interface uses the UART interface for control and PCM interface for audio. The table below lists the pin usage for the 1DX M.2 modules. The column "When is signal needed" signals four different categories:

- Always: These signals shall always be connected.
- Wi-Fi: These signals shall always be connected then the Wi-Fi interface is used.
- Bluetooth: These signals shall always be connected then the Bluetooth interface is used.
- Optional: These signals are optional to connect.

Pin #	Side of pcb	M.2 Name	Voltage Level and Signal Direction	When is signal needed	Note
1	Top	GND	GND	Always	Connect to ground
2	Bottom	3.3 V		Always	Power supply input. Connect to stable, low-noise 3.3V supply.
3	Top	USB_D+			Not connected.
4	Bottom	3.3 V		Always	Power supply input. Connect to stable, low-noise 3.3V supply.
5	Top	USB_D-			Not connected.

6	Bottom	LED_1#			Not connected.
7	Top	GND	GND	Always	Connect to ground.
8	Bottom	PCM_CLK	1.8V I/O	Bluetooth audio	For Bluetooth audio interface: BT_PCM_CLK
9	Top	SDIO CLK	1.8V Input to M.2	Wi-Fi SDIO	For Wi-Fi SDIO interface: SDIO_CLK Note that maximum frequency is 50 MHz
10	Bottom	PCM_SYNC	1.8V I/O	Bluetooth audio	For Bluetooth audio interface: BT_PCM_SYNC
11	Top	SDIO CMD	1.8V I/O	Wi-Fi SDIO	For Wi-Fi SDIO interface: SDIO_CMD Note: 10-100K ohm pullup required
12	Bottom	PCM_OUT	1.8V output from M.2	Bluetooth audio	For Bluetooth audio interface: BT_PCM_OUT
13	Top	SDIO DATA0	1.8V I/O	Wi-Fi SDIO	For Wi-Fi SDIO interface: SDIO_D0 Note: 10-100K ohm pullup required
14	Bottom	PCM_IN	1.8V input to M.2	Bluetooth audio	For Bluetooth audio interface: BT_PCM_IN
15	Top	SDIO DATA1	1.8V I/O	Wi-Fi SDIO	For Wi-Fi SDIO interface: SDIO_D1 Note: 10-100K ohm pullup required
16	Bottom	LED_2#			Not connected.
17	Top	SDIO DATA2	1.8V I/O	Wi-Fi SDIO	For Wi-Fi SDIO interface: SDIO_D2 Note: 10-100K ohm pullup required
18	Bottom	GND		Always	Connect to ground.
19	Top	SDIO DATA3	1.8V I/O	Wi-Fi SDIO	For Wi-Fi SDIO interface: SDIO_D3 Note: 10-100K ohm pullup required
20	Bottom	UART WAKE#	3.3V OD output from M.2	Bluetooth	For Bluetooth UART interface: BT_HOST_WAKE_L Require an external 10K pullup resistor to 3.3V.
21	Top	SDIO WAKE#	1.8V OD output from M.2	Wi-Fi SDIO	For Wi-Fi SDIO interface: WL_HOST_WAKE_L Require an external 10K pullup resistor to 1.8V.
22	Bottom	UART TXD	1.8V output from M.2	Bluetooth	For Bluetooth UART interface: BT_UART_TXD
23	Top	SDIO RESET#			Not connected.
24	Key, non existing				
25	Key, non existing				
26	Key, non existing				
27	Key, non existing				
28	Key, non existing				
29	Key, non existing				
30	Key, non existing				
31	Key, non existing				
32	Bottom	UART_RXD	1.8V input to M.2	Bluetooth	For Bluetooth UART interface: BT_UART_RXD
33	Top	GND		Always	Connect to ground.
34	Bottom	UART_RTS	1.8V output from M.2	Bluetooth	For Bluetooth UART interface: BT_UART_RTS
35	Top	PERp0			Not connected.
36	Bottom	UART_CTS	1.8V input to M.2	Bluetooth	For Bluetooth UART interface: BT_UART_CTS
37	Top	PERn0			Not connected.
38	Bottom	VENDOR DEFINED			Not connected.
39	Top	GND		Always	Connect to ground.

40	Bottom	VENDOR DEFINED	1.8V I/O	Optional	WL_GPIO_4
41	Top	PETp0			Not connected.
42	Bottom	VENDOR DEFINED	1.8V input to M.2	Bluetooth	BT_DEV_WAKE_L
43	Top	PETn0			Not connected.
44	Bottom	COEX3	1.8V I/O	Optional	WL_GPIO_1, same as pin 66
45	Top	GND		Always	Connect to ground.
46	Bottom	COEX_TXD	1.8V I/O	Optional	WL_GPIO_2
47	Top	REFCLKp0			Not connected.
48	Bottom	COEX_RXD	1.8V I/O	Optional	WL_GPIO_3
49	Top	REFCLKn0			Not connected.
50	Bottom	SUSCLK	3.3V input to M.2	Always	External sleep clock input (32.768kHz)
51	Top	GND		Always	Connect to ground.
52	Bottom	PERST0#			Not connected.
53	Top	CLKREQ0#			Not connected.
54	Bottom	W_DISABLE2#	3.3V input to M.2	Always	BT_REG_ON, High = BT enabled, Low = BT disabled
55	Top	PEWAKE0#			Not connected.
56	Bottom	W_DISABLE1#	3.3V input to M.2	Always	WL_REG_ON, High = Wi-Fi enabled, Low = Wi-Fi disabled
57	Top	GND		Always	Connect to ground.
58	Bottom	I2C_SDA			Not connected.
59	Top	Reserved			Not connected.
60	Bottom	I2C_CLK			Not connected.
61	Top	Reserved	1.8V I/O	Optional	BT_GPIO_3
62	Bottom	ALERT#			Not connected.
63	Top	GND		Always	Connect to ground.
64	Bottom	RESERVED		Optional	Optional supply voltage input for control and data signal voltage level. Apply a stable, low-noise, 3.3V 100mA supply to set 3.3V voltage level on all signals.
65	Top	Reserved	1.8V output from M.2	Optional	BT_GPIO4
66	Bottom	UIM_SWP	1.8V I/O	Wi-Fi SDIO	WL_GPIO_1, same as pin 44
67	Top	Reserved	1.8V input to M.2	Optional	BT_GPIO5
68	Bottom	UIM_POWER_ SNK			Not connected.
69	Top	GND		Always	Connect to ground.
70	Bottom	UIM_POWER_ SRC/GPIO_1			Not connected.
71	Top	Reserved			Not connected.
72	Bottom	3.3 V		Always	Power supply input. Connect to stable, low-noise 3.3V supply.
73	Top	Reserved			Not connected.
74	Bottom	3.3 V		Always	Power supply input. Connect to stable, low-noise 3.3V supply.
75	Top	GND		Always	Connect to ground.

3.5 Test Points

There are some test points that can be of interest to probe for debugging purposes, as illustrated in the picture below.

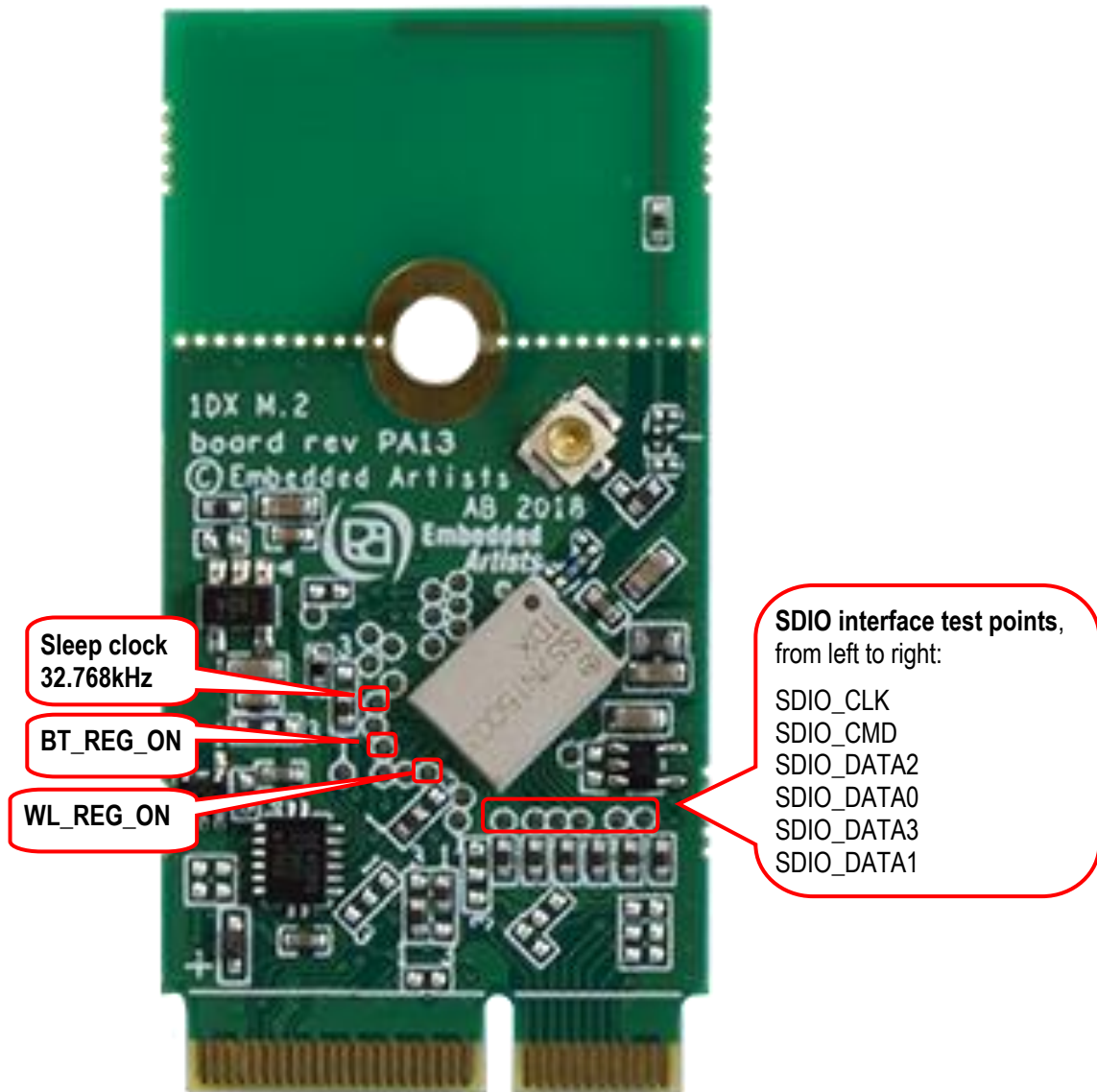


Figure 4 – 1DX M.2 Module Test Points

3.6 VDDIO Override Feature

The M.2 standard specifies 1.8V logic level on several of the data and control signals. It is possible to override the voltage level for the 1.8V signals via pin 64. Apply a 3.3V / 100 mA supply to pin 64 in order to get 3.3V voltage level on all data and control signals.

4 Antenna

This chapter address the antenna side of the module. There is an on-board, reference certified pcb trace antenna. This can be used for testing/evaluation purposes, but also for the final product. Also, for testing and evaluation purposes, it is possible to disconnect the on-board antenna and instead use an u.fl. connector to connect an external antenna.

4.1 Mounting and Clearance

Ideally, arrange the M.2 module so that the antenna is located at a corner of the product. Keep plastic case (i.e., non-metallic) away from the antenna area with at least 5 mm clearance (in all directions). Also keep any metal elements (e.g., connectors, battery, etc.) away from the antenna area with at least 5 mm clearance (in all directions). Keep a clearance area under and above the antenna area of at least 7.5mm , both under and over the PCB.

Human hands or body parts should be kept away (in the normal use case) from the antenna area.

The ground hole in the middle shall be grounded. Use a metal stand-off according to M.2 standard (height suitable for selected M.2 connector) and use metal screw to create a proper ground connection.

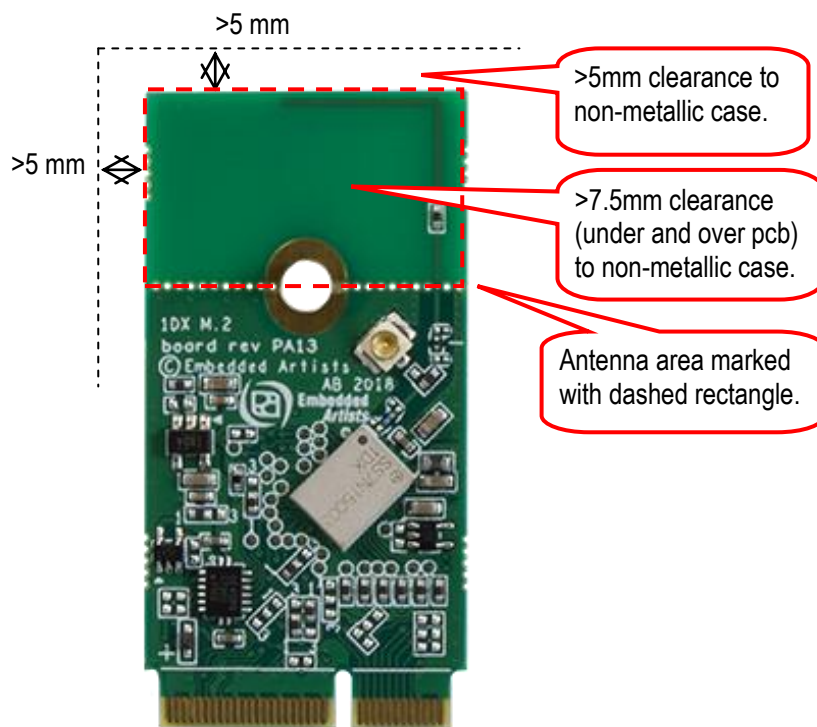


Figure 5 – M.2 Module Clearance Area

4.2 Overriding PCB Trace Antenna

The antenna connection from the 1DX module be redirected to the u.fl. connector by just moving one zero ohm 0402 resistor, see illustration below. The on-board trace antenna can be left as-is, or the antenna can be snapped-off.

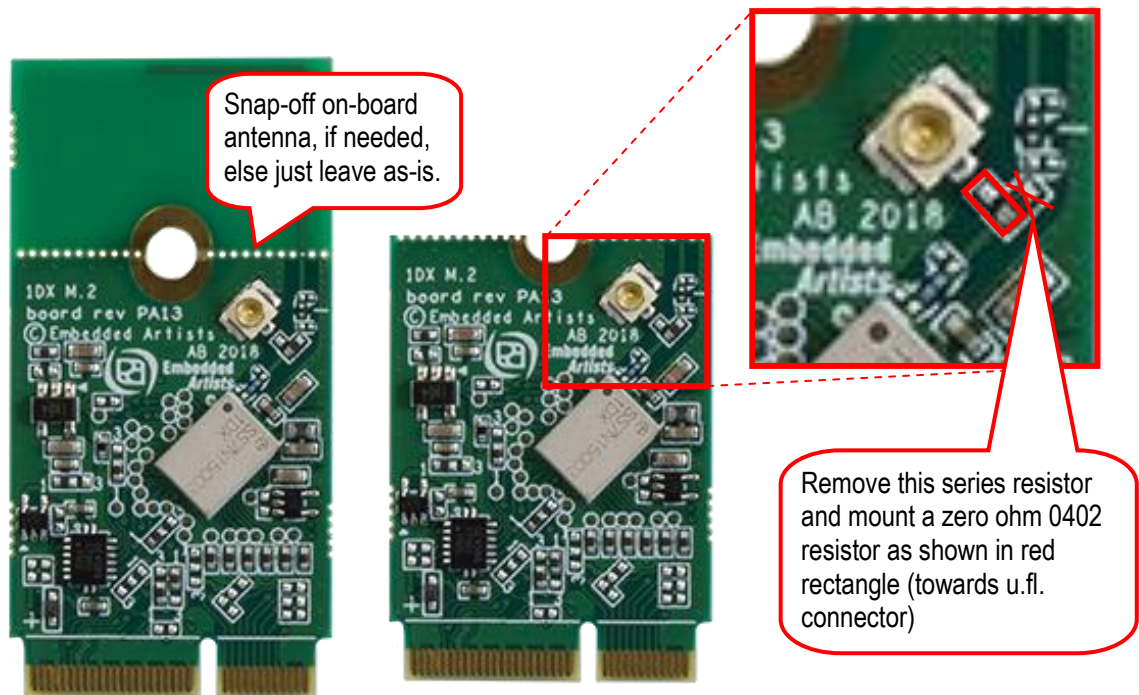


Figure 6 – Rework to Connect U.F.L. Connector

4.3 On-board Trace Antenna Performance

The on-board pcb trace antenna type is monopole. The 1DX M.2 module has been measured both standalone and mounted on the iMX OEM Carrier Board (which is a typical carrier board design).

The table below lists total efficiency:

Condition	Frequency [MHz]			Average dB	Average %
	2400	2442	2484		
M.2 module mounted on reference carrier board	-2.5	-2.3	-2.2	-2.3	58.4
M.2 module standalone	-2.9	-2.8	-2.7	-2.8	52.3

The table below lists peak gain:

Condition	Frequency [MHz]			Max dBi
	2400	2442	2484	
M.2 module mounted on reference carrier board	0.0	-0.1	0.1	0.1
M.2 module standalone	-0.5	-0.1	0.2	0.2

4.3.1 1DX M.2 Module Mounted on iMX OEM Carrier Board

The 3D directivity measurements are presented below for the 2.4 GHz bands when the 1DX M.2 module is mounted on the iMX OEM Carrier Board.

@2442MHz

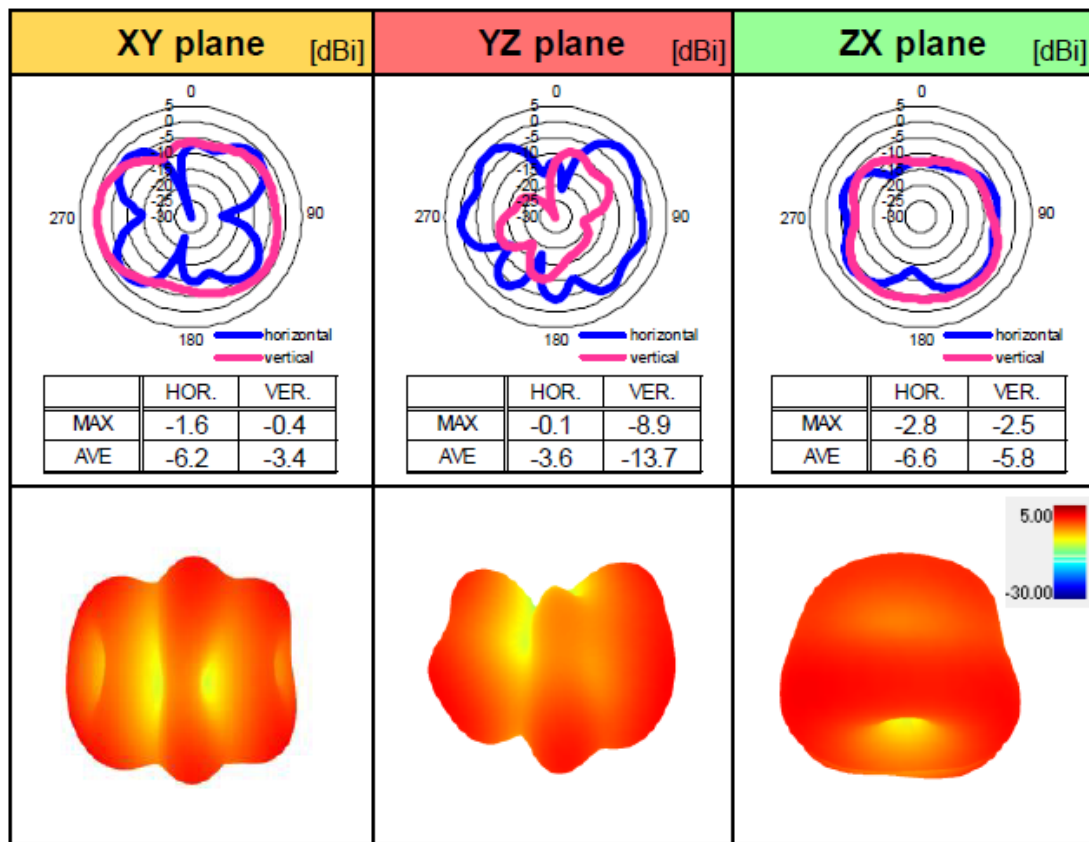


Figure 7 – 3D Directivity Measurements in 2.4 GHz Band (1DX M.2 Mounted on iMX OEM Carrier Board)

2D Directional indication

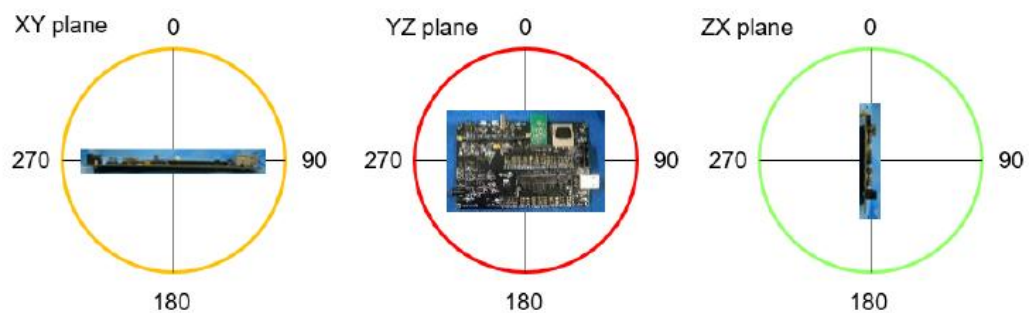


Figure 8 – 3D Directivity Measurements Plane Orientations

The pictures below illustrates the return loss, efficiency and directivity when the 1DX M.2 module is mounted on the iMX OEM Carrier Board.

<Return Loss>

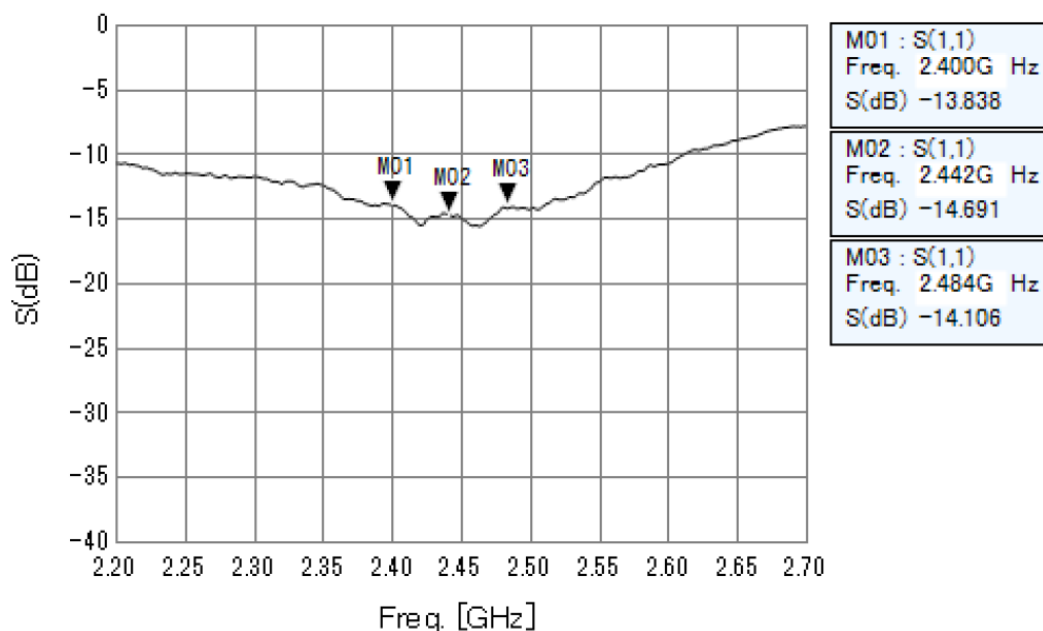


Figure 9 – Return Loss for 1DX M.2 Module Mounted on iMX OEM Carrier Board

<Efficiency>

								[dBi]	[dB]
LINEAR POLARIZATION		XY-plane		YZ-plane		ZX-plane		Total Efficiency	
		hor.	ver.	hor.	ver.	hor.	ver.		
2400 MHz	MAX.	-2.2	-0.2	0.0	-9.3	-3.2	-2.3	-2.5	
	AVE.	-6.8	-3.2	-3.6	-13.8	-7.0	-5.6		
2442 MHz	MAX.	-1.6	-0.4	-0.1	-8.9	-2.8	-2.5	-2.3	
	AVE.	-6.2	-3.4	-3.6	-13.7	-6.6	-5.8		
2484 MHz	MAX.	-1.2	-0.9	0.1	-8.7	-2.6	-2.6	-2.2	
	AVE.	-5.8	-3.7	-3.6	-13.8	-6.3	-6.0		

Figure 10 – Efficiency for 1DX M.2 Module Mounted on iMX OEM Carrier Board

<Directivity>

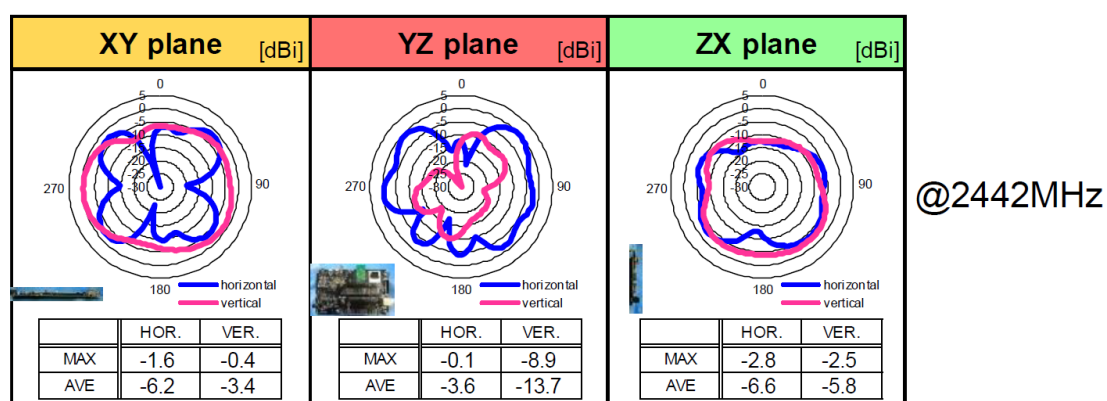


Figure 11 – Directivity for 1DX M.2 Module Mounted on iMX OEM Carrier Board

4.3.2 1DX M.2 Module Standalone

The 3D directivity measurements are presented below for the 2.4 GHz when the 1DX M.2 module is standalone.

@2442MHz

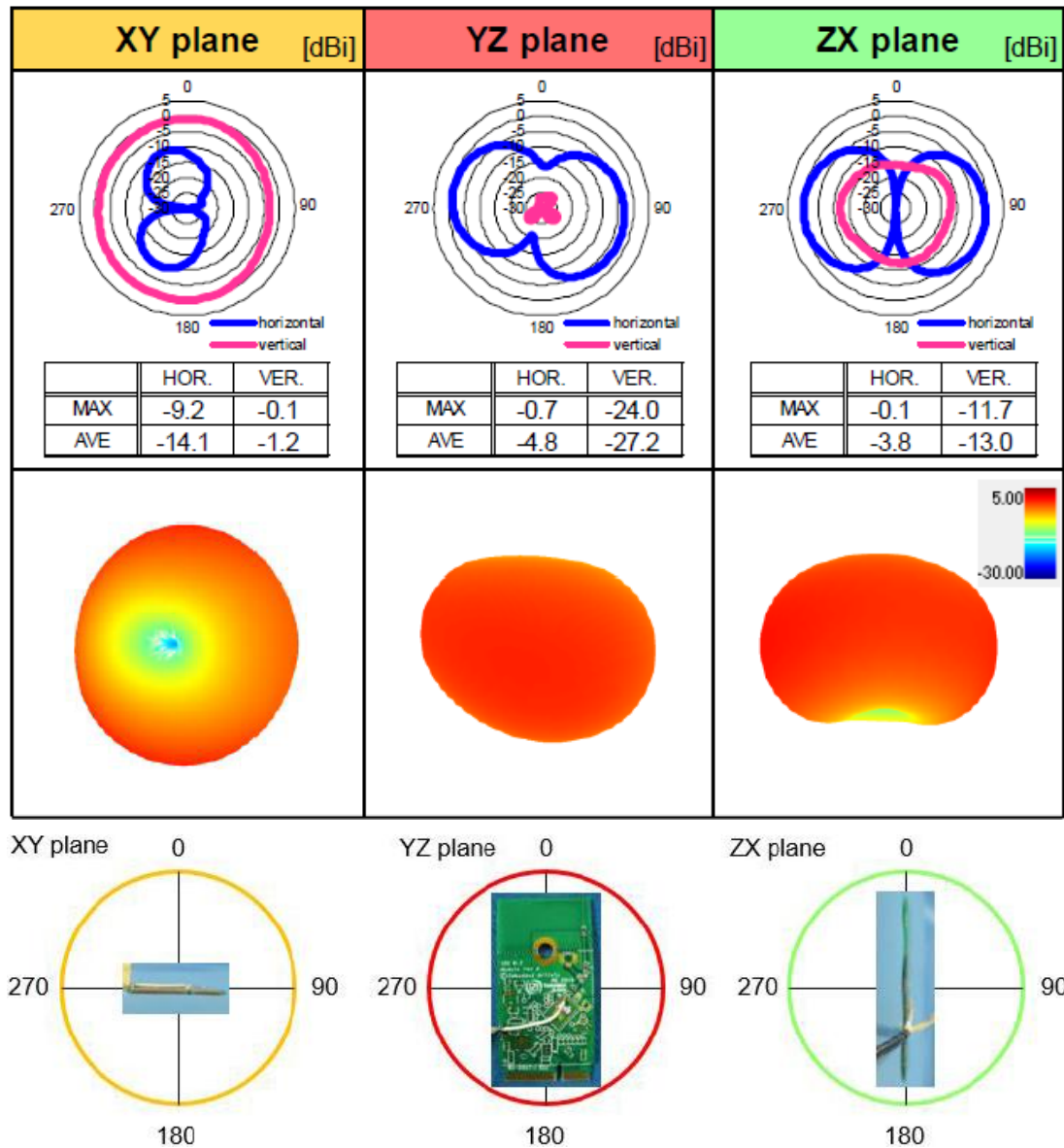


Figure 12 – 3D Directivity Measurements Plane Orientations

The pictures below illustrates the return loss, efficiency and directivity when the 1DX M.2 module is standalone.

<Return Loss>

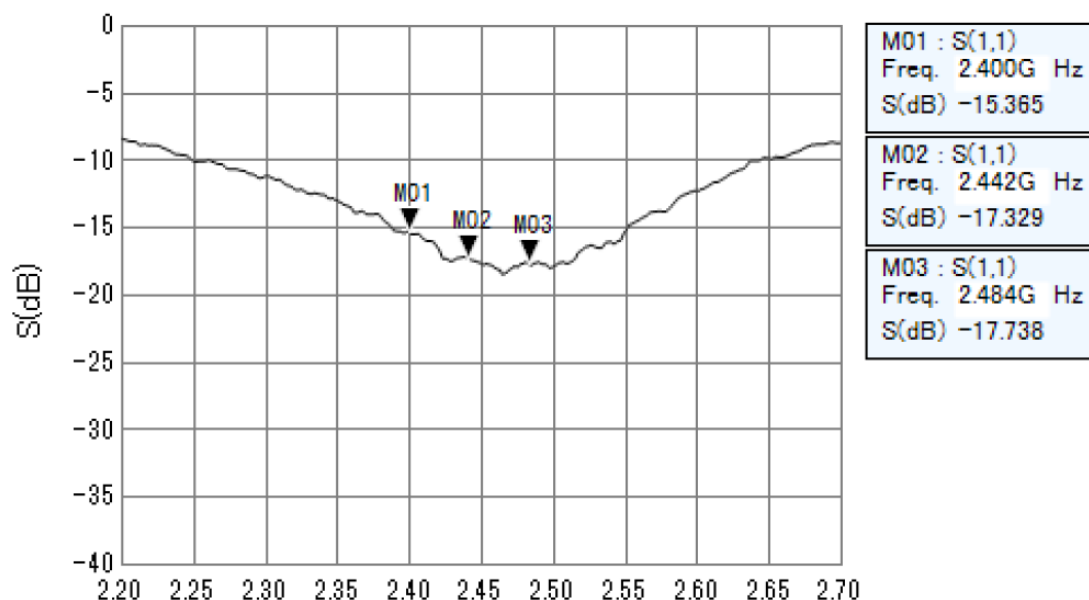


Figure 13 – Return Loss for 1DX M.2 Module Standalone

<Efficiency>

LINEAR POLARIZATION		XY-plane		YZ-plane		ZX-plane		Total Efficiency
		hor.	ver.	hor.	ver.	hor.	ver.	
2400 MHz	MAX.	-9.5	-0.5	-0.7	-23.5	-0.5	-11.4	-2.9
	AVE.	-14.2	-1.3	-4.7	-27.7	-4.0	-12.9	
2442 MHz	MAX.	-9.2	-0.1	-0.7	-24.0	-0.1	-11.7	-2.8
	AVE.	-14.1	-1.2	-4.8	-27.2	-3.8	-13.0	
2484 MHz	MAX.	-9.4	0.2	-0.4	-23.6	-0.2	-11.9	-2.7
	AVE.	-14.3	-1.0	-4.8	-27.4	-3.7	-13.1	

Figure 14 – Efficiency for 1DX M.2 Module Standalone

<Directivity>

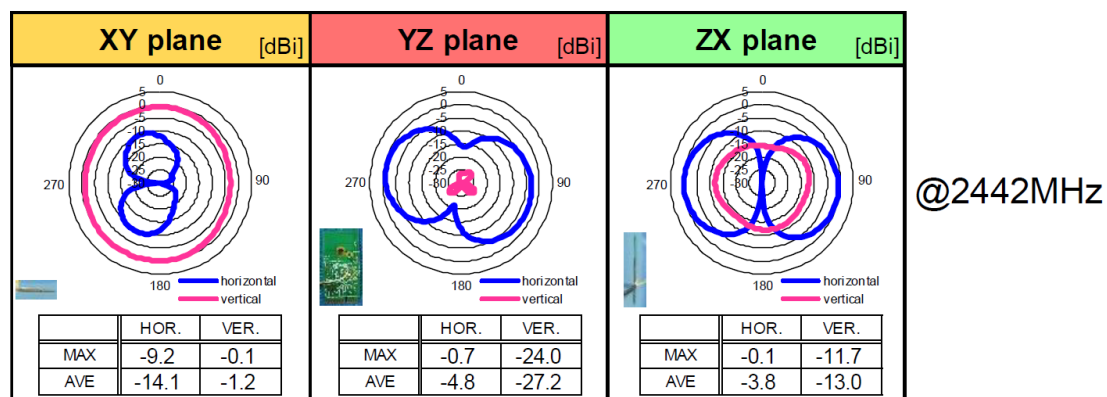


Figure 15 – Directivity for 1DX M.2 Module Standalone

5 Regulatory

<TBC>

6 Disclaimers

Embedded Artists reserves the right to make changes to information published in this document, including, without limitation, specifications and product descriptions, at any time and without notice. This document supersedes and replaces all information supplied prior to the publication hereof.

Customer is responsible for the design and operation of their applications and products using Embedded Artists' products, and Embedded Artists accepts no liability for any assistance with applications or customer product design. It is customer's sole responsibility to determine whether the Embedded Artists' product is suitable and fit for the customer's applications and products planned, as well as for the planned application and use of customer's third party customer(s). Customers should provide appropriate design and operating safeguards to minimize the risks associated with their applications and products. Customer is required to have expertise in electrical engineering and computer engineering for the installation and use of Embedded Artists' products.

Embedded Artists does not accept any liability related to any default, damage, costs or problem which is based on any weakness or default in the customer's applications or products, or the application or use by customer's third party customer(s). Customer is responsible for doing all necessary testing for the customer's applications and products using Embedded Artists' products in order to avoid a default of the applications and the products or of the application or use by customer's third party customer(s). Embedded Artists does not accept any liability in this respect.

Embedded Artists does not accept any liability for errata on individual components. Customer is responsible to make sure all errata published by the manufacturer of each component are taken note of. The manufacturer's advice should be followed.

Embedded Artists does not accept any liability and no warranty is given for any unexpected software behavior due to deficient components.

Customer is required to take note of manufacturer's specification of used components. Such specifications, if applicable, contains additional information that must be taken note of for the safe and reliable operation.

All Embedded Artists' products are sold pursuant to Embedded Artists' terms and conditions of sale: http://www.embeddedartists.com/sites/default/files/docs/General_Terms_and_Conditions.pdf

No license, express or implied, by estoppel or otherwise, to any intellectual property rights is granted under this document. If any part of this document refers to any third party products or services it shall not be deemed a license grant by Embedded Artists for the use of such third party products or services, or any intellectual property contained therein or considered as a warranty covering the use in any manner whatsoever of such third party products or services or any intellectual property contained therein.

UNLESS OTHERWISE SET FORTH IN EMBEDDED ARTISTS' TERMS AND CONDITIONS OF SALE EMBEDDED ARTISTS DISCLAIMS ANY EXPRESS OR IMPLIED WARRANTY WITH RESPECT TO THE USE AND/OR SALE OF EMBEDDED ARTISTS PRODUCTS INCLUDING WITHOUT LIMITATION IMPLIED WARRANTIES OF MERCHANTABILITY, FITNESS FOR A PARTICULAR PURPOSE (AND THEIR EQUIVALENTS UNDER THE LAWS OF ANY JURISDICTION), OR INFRINGEMENT OF ANY PATENT, COPYRIGHT OR OTHER INTELLECTUAL PROPERTY RIGHT.

UNLESS EXPRESSLY APPROVED IN WRITING BY THE CEO OF EMBEDDED ARTISTS, PRODUCTS ARE NOT RECOMMENDED, AUTHORIZED OR WARRANTED FOR USE IN MILITARY, AIR CRAFT, SPACE, NUCLEAR, LIFE SAVING, OR LIFE SUSTAINING APPLICATIONS, NOR IN PRODUCTS OR SYSTEMS WHERE FAILURE OR MALFUNCTION MAY RESULT IN PERSONAL INJURY, DEATH, OR SEVERE PROPERTY OR ENVIRONMENTAL DAMAGE.

Resale of Embedded Artists' products with provisions different from the statements and/or technical features set forth in this document shall immediately void any warranty granted by Embedded Artists

for the Embedded Artists' product or service described herein and shall not create or extend in any manner whatsoever, any liability of Embedded Artists.

This document as well as the item(s) described herein may be subject to export control regulations. Export might require a prior authorization from national authorities.

6.1 Definition of Document Status

Preliminary – The document is a draft version only. The content is still under internal review and subject to formal approval, which may result in modifications or additions. Embedded Artists does not give any representations or warranties as to the accuracy or completeness of information included herein and shall have no liability for the consequences of use of such information. The document is in this state until the product has passed Embedded Artists product qualification tests.

Approved – The information and data provided define the specification of the product as agreed between Embedded Artists and its customer, unless Embedded Artists and customer have explicitly agreed otherwise in writing.

Mouser Electronics

Authorized Distributor

Click to View Pricing, Inventory, Delivery & Lifecycle Information:

[Embedded Artists:](#)

[EAR00318](#)