

# M6 - SERIES

## SPECIFICATIONS AND ORDERING INFORMATION

1 3/4" SQUARE 0.5 AMP @ 28 VDC

The M6 Series was originally designed to meet the requirements of MIL-S-3786/40. Standard construction includes 30° indexing up to 12 positions, solder lug terminals, and adjustable stops. Switching is available up to 32 positions.



### SPECIFICATIONS

#### ELECTRICAL

**Current and Voltage Rating:** Make and break resistive load 0.5 amp @ 28 VDC; 0.125 amp @ 115 VAC.

**Current Carrying Capacity:** 10 amps.

**Dielectric Strength:** 1,500 VAC between current carrying parts and ground.

**Contact Resistance:** Average initial 10 milliohms.

**Insulation Resistance:** In excess of 1,000,000 megohms

**Hardware:** Mounting nut and lockwasher are shipped assembled.

#### MECHANICAL

**Materials and Finishes:** All parts utilize non-corrosive materials as standard.

**Clips and Rotors:** Silver alloy composite as standard.

**Insulation:** Glass epoxy.

**Index:** Dual-ball, hill and valley design.

**Index Life:** 25,000 cycles minimum.

**Index Torque:** Switches have lowest practical torque consistent with crisp detenting and smooth, reliable operation.

**Index Angles:** Positive 30° standard, 11.25°, 15°, and 22.5° available.

**Index Stops:** Adjustable standard, or continuous.

**Stop Strength:** 50 in. lbs. minimum.

### STANDARD PART NUMBER

#### EPOXY GLASS INSULATION

SWITCHES - 30° INDEXING

ADJUSTABLE STOPS SET @ 2 POS. - SOLDER LUG TERMINALS

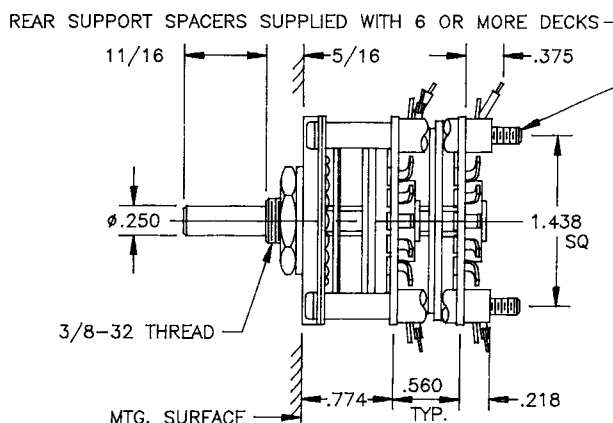
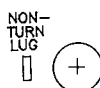
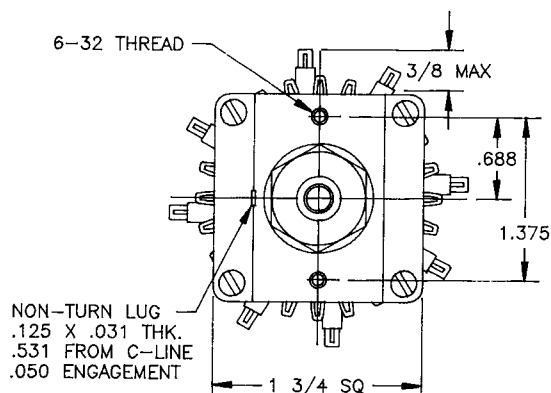
POLES	ACTIVE POSITIONS	POLES/ SECTION	NO. OF SECTIONS	SHORTING	NON-SHORTING	FIG. *
01	02-12	1	1	M6G0112S	M6G0112N	MC
02	02-12	1	2	M6G0212S	M6G0212N	MC
02	02-06	2	1	M6G0206S	M6G0206N	MD
03	02-12	1	3	M6G0312S	M6G0312N	MC
04	02-12	1	4	M6G0412S	M6G0412N	MC
04	02-06	2	2	M6G0406S	M6G0406N	MD
06	02-06	2	3	M6G0606S	M6G0606N	MD
08	02-06	2	4	M6G0806S	M6G0806N	MD

\* FIGURES ARE SHOWN ON PAGE 57.

### DIMENSIONS

#### STANDARD CONSTRUCTION

#### M6G - GLASS EPOXY CONSTRUCTION



**ELECTROSWITCH • ELECTRONIC PRODUCTS**  
UNIT OF ELECTRO SWITCH CORP.

2010 Yonkers Road  
Raleigh, NC 27604

Telephone: (888) ROTARYS or (919) 833-0707  
Fax: (800) 909-9171 or (919) 833-8016

2 DIGIT SERIES	INSULATION TYPE	TOTAL POLES	ACTIVE POSITIONS	CONTACT TYPE	TERMINAL TYPE	INDEX ANGLE	STOP TYPE	SHAFT/ BUSHING	SHAFT FLAT
M6	G - GLASS	01 - MIN.	12 - MAX @ 30° 16 - MAX @ 22.5°	N - NON-SHORTING S - SHORTING	L - SOLDER LUG R - REAR P.C.	11.5° 15° 22.5° 30°	A - ADJ. C - CONT.	SEE CHART "A"	SEE CHART "B"
M6	G - GLASS	01 - MIN.	32 - MAX @ 11.5° 24 - MAX @ 15°	S - SHORTING					

CUSTOMERS SPECIFIED ORDER NUMBER FOR STANDARD OPTIONS

M6G

(SPECIFY)

(SPECIFY)

(SPECIFY)

(SPECIFY)

(SPECIFY)

(SPECIFY)

ADDITIONAL OPTIONS

(SPECIFY)

(SPECIFY)

(SPECIFY)

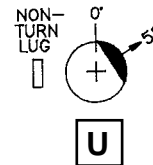
(SPECIFY)

(SPECIFY)

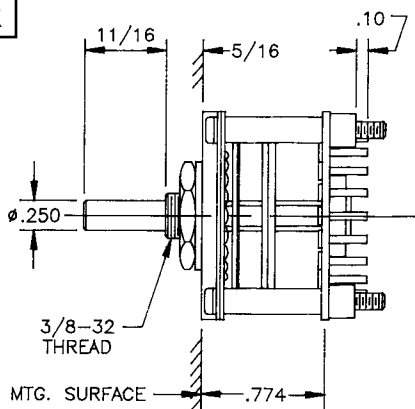
P/N OPT.	SHAFT LGTH. "A"	BUSH. LGTH. "B"
01	11/16	5/16
02	5/8	3/8

P/N OPT.	FLAT ANGLE
B	ROUND - STD
U	58°

SHAFT AS VIEWED  
WITH NON-TURN LUG  
AT 9 O'CLOCK AND  
SHAFT IN EXTREME  
CCW POSITION AND  
STRUT BOLTS  
ORIENTED VERTICALLY.



**R**

[illegible]

**ELECTROSWITCH • ELECTRONIC PRODUCTS**  
UNIT OF ELECTRO SWITCH CORP.

2010 Yonkers Road  
Raleigh, NC 27604

Telephone: (888) ROTARYS or (919) 833-0707  
Fax: (800) 909-9171 or (919) 833-8016

# Mouser Electronics

Authorized Distributor

Click to View Pricing, Inventory, Delivery & Lifecycle Information:

[Electroswitch:](#)

[M6G0806N](#)