

# E4 - SERIES

## SPECIFICATIONS AND ORDERING INFORMATION

71.44 mm DIAMETER 11.0 AMPS @ 28 VDC

The E4 Series was designed to offer maximum power ratings in an electronic open frame switch. Standard construction consists of a 20° index, 2-17 positions, and solder lug terminals.



### SPECIFICATIONS

#### ELECTRICAL

**Current and Voltage Rating:** Make and break resistive load 11.0 amps @ 28 VDC; 9.0 amps @ 115 VAC.

**Current Carrying Capacity:** 17 amps.

**Dielectric Strength:** 3000 VAC between current carrying parts and ground.

**Contact Resistance:** Average initial 7.0 milliohms.

**Insulation Resistance:** In excess of 1,000,000 megohms.

**Hardware:** Mounting nut and lockwasher are shipped assembled.

#### MECHANICAL

**Materials and Finishes:** All parts utilize non-corrosive materials as standard.

**Contacts and Collector Rings:** Coin silver as standard.

**Insulation:** Ceramic.

**Index:** Dual-ball, hill and valley design.

**Index Life:** 25,000 cycles minimum.

**Index Torque:** Switches have lowest practical torque consistent with crisp detenting and smooth, reliable operation.

**Index Angles:** Positive 20° standard.

**Index Stops:** Adjustable stops standard, fixed or continuous.

**Stop Strength:** 2.82 Nm minimum.

### STANDARD PART NUMBER

#### 20° INDEXING

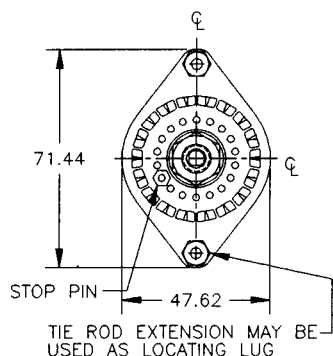
SWITCHES ADJUSTABLE STOPS - SOLDER LUG TERMINALS - STOPS SET @ 2 POS.

| POLES | ACTIVE POSITIONS | POLES/ SECTION | NO. OF SECTIONS | SHORTING | NON-SHORTING | FIG. * | POLES | ACTIVE POSITIONS | POLES/ SECTION | NO. OF SECTIONS | SHORTING | NON-SHORTING | FIG. * |
|-------|------------------|----------------|-----------------|----------|--------------|--------|-------|------------------|----------------|-----------------|----------|--------------|--------|
| 01    | 02-17            | 1              | 1               | E4C0117S | E4C0117N     | EA     | 06    | 02-17            | 1              | 6               | E4C0617S | E4C0617N     | EA     |
| 02    | 02-17            | 1              | 2               | E4C0217S | E4C0217N     | EA     | 06    | 02-08            | 2              | 3               | E4C0608S | E4C0608N     | EB     |
| 02    | 02-08            | 2              | 1               | E4C0208S | E4C0208N     | EB     | 06    | 02-05            | 3              | 2               | E4C0605S | E4C0605N     | EC     |
| 03    | 02-17            | 1              | 3               | E4C0317S | E4C0317N     | EA     | 08    | 02-08            | 2              | 4               | E4C0808S | E4C0808N     | EB     |
| 03    | 02-05            | 3              | 1               | E4C0305S | E4C0305N     | EC     | 09    | 02-05            | 3              | 3               | E4C0905S | E4C0905N     | EC     |
| 04    | 02-17            | 1              | 4               | E4C0417S | E4C0417N     | EA     | 10    | 02-08            | 2              | 5               | E4C1008S | E4C1008N     | EB     |
| 04    | 02-08            | 2              | 2               | E4C0408S | E4C0408N     | EB     | 12    | 02-05            | 3              | 4               | E4C1205S | E4C1205N     | EC     |
| 05    | 02-17            | 1              | 5               | E4C0517S | E4C0517N     | EA     | 15    | 02-05            | 3              | 5               | E4C1505S | E4C1505N     | EC     |

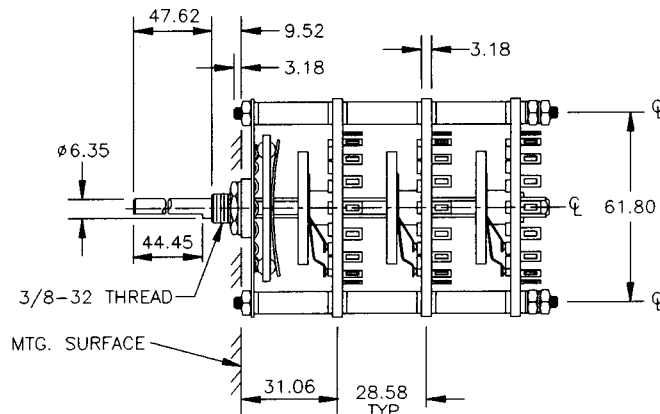
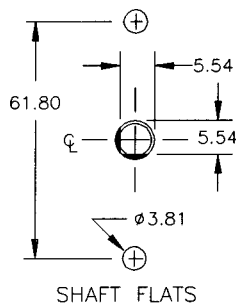
\* FIGURES ARE SHOWN ON PAGE 57.

### DIMENSIONS

#### STANDARD CONSTRUCTION



#### E4C - CERAMIC CONSTRUCTION



**ELECTROSWITCH • ELECTRONIC PRODUCTS**  
UNIT OF ELECTRO SWITCH CORP.

2010 Yonkers Road, Raleigh, NC 27604

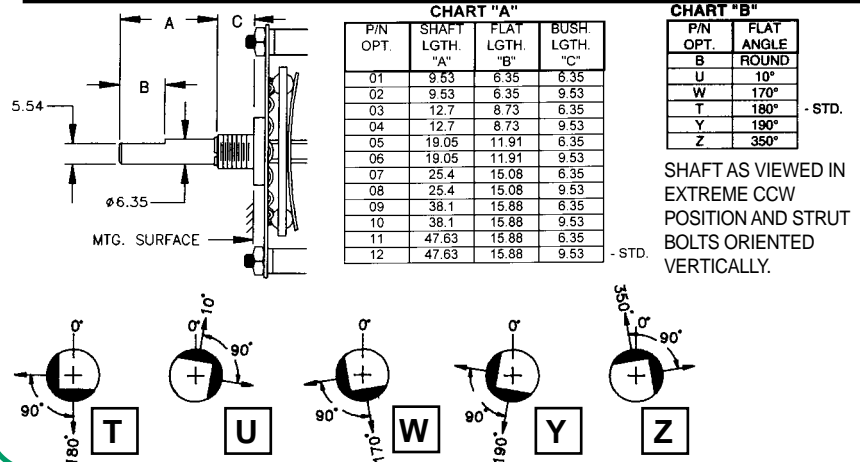
## How to Order Additional Options:

| 2 DIGIT SERIES | INSULATION TYPE | TOTAL POLES | ACTIVE POSITIONS | CONTACT TYPE                     | STOP TYPE                          | SHAFT/ BUSHING | SHAFT FLAT    |
|----------------|-----------------|-------------|------------------|----------------------------------|------------------------------------|----------------|---------------|
| E4             | C - CERAMIC     | 01 - MIN.   | 17 - MAX @ 20°   | S - SHORTING<br>N - NON SHORTING | A - ADJ.<br>F - FIXED<br>C - CONT. | SEE CHART "A"  | SEE CHART "B" |

| CUSTOMERS SPECIFIED ORDER NUMBER FOR STANDARD OPTIONS |          |           |           | ADDITIONAL OPTIONS |           |           |
|---|----------|-----------|-----------|--------------------|-----------|-----------|
| <b>E</b>  | <b>4</b> | <b>C</b>  |           |                    |           |           |
|   |          | (SPECIFY) | (SPECIFY) | (SPECIFY)          | (SPECIFY) | (SPECIFY) |

### SHAFT, BUSHING, AND FLAT OPTIONS



CUSTOM SWITCHES ARE AVAILABLE. CONTACT THE FACTORY WITH YOUR COMPLETE SPECIFICATIONS.

# Mouser Electronics

Authorized Distributor

Click to View Pricing, Inventory, Delivery & Lifecycle Information:

[Electroswitch:](#)

[E4C0305S](#) [E4C0217S](#)