

ALL VIEWS SHOW SWITCH IN EXTREME
COUNTER CLOCKWISE POSITION

DATE
12-5-70
BY
6L

CUSTOMER
DISTR. SALES
None

SWITCH NO.
D96-499
OLD/PA499

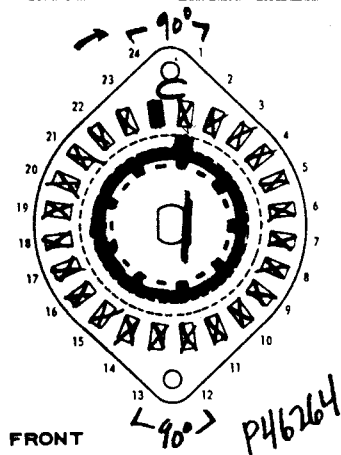
TYPE

2 POLES POS. SECT.

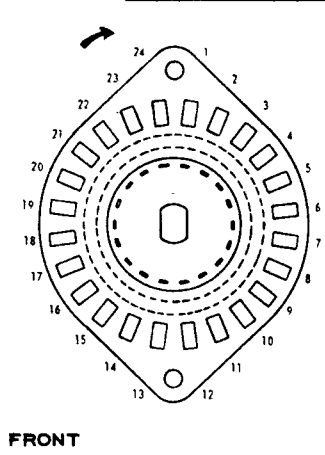
SO CR DATE SCHED.

QTY. SCHEDULE	DATE	QUANTITY	BALANCE
BAL. TO RUN			
O.K.			
LAYOUT			

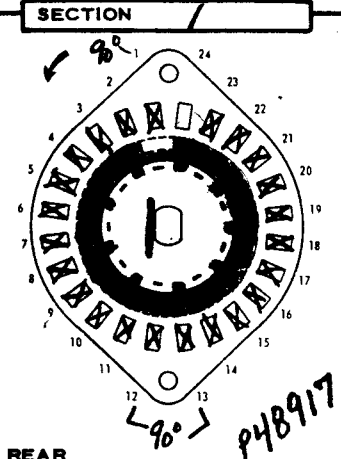
AM'T PART NAME PART NO. DWG. NO. TOTAL R I L



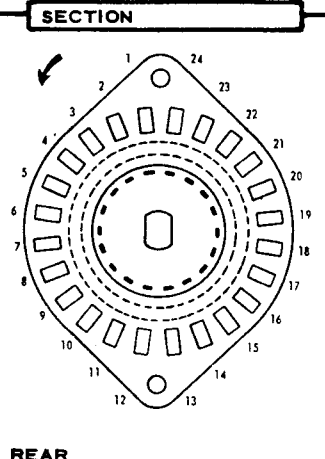
FRONT



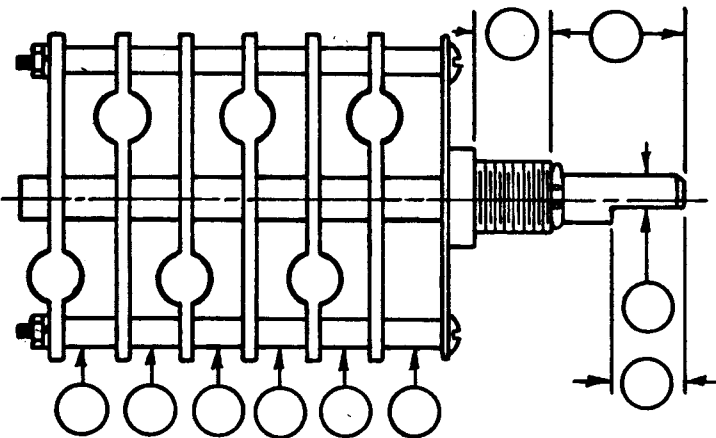
FRONT



REAR

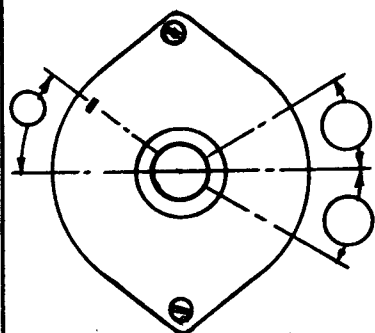


REAR



CHANGES A) EYELETS
WERE P25611-00
8-24-88 P.Q.
B) Switch No. was P\$672-119,
gms. 4-18-91, ECO A1M0017.

LOCATING LUG YES NO



NOTES

SECTION ONLY
NOTES 1, 14, 26 APPLY

ORIGINAL

Mouser Electronics

Authorized Distributor

Click to View Pricing, Inventory, Delivery & Lifecycle Information:

[Electroswitch:](#)

[D9G-499](#)