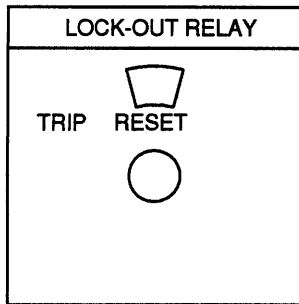
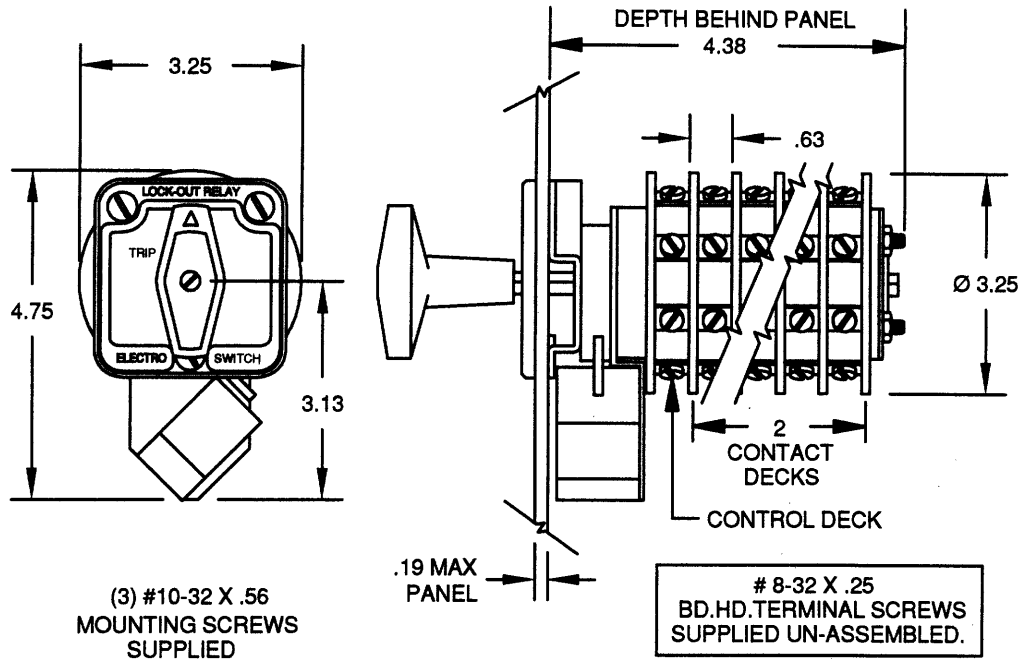


**ELECTROSWITCH**UNIT OF ELECTRO SWITCH CORP.
WEYMOUTH, MASSACHUSETTS 02188
TEL: (781)335-5200 FAX: (781)335-4253SERIES 24
MANUAL RESET
LOCKOUT RELAY**7802D**STANDARD
NAMEPLATE ENGRAVING

CODE 17C-2L22



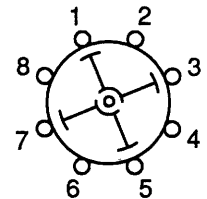
TRIP COIL SPECIFICATIONS

NOMINAL VOLTAGE:	125 VDC	120 VAC
OPERATING RANGE:	30-140 VDC	30-140 VAC
THRESHOLD:	16 VDC (MIN)	20 VDC (MIN)
COIL RESISTANCE:	27.0 Ω	27.0 Ω
COIL BURDEN:	4.6 AMPS @125 VDC	4.5 AMPS @120 VAC

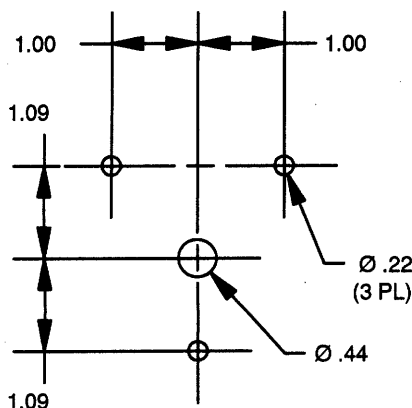
FOR FURTHER INFORMATION REFER TO
TECHNICAL PUBLICATION LOR-1FILE NO.
E8008020A-120VAC
15A-240VAC
6A-600VAC
3A-125VDC
1A-250VDC20A-600VAC res
15A-600VAC ind

TYPICAL CONTACT DECK LAYOUT

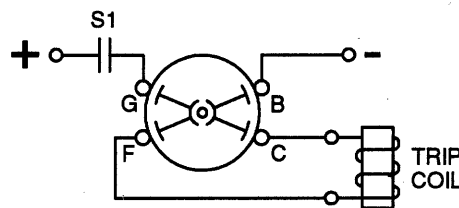
	CONTACTS		POSITION	
			TRIP	RESET
DECK 1	11	13		X
	12	18	X	
	15	17		X
	14	16	X	

ADDITIONAL CONTACT DECKS SAME AS
DECK 1 EXCEPT TERMINAL NUMBERS.
(DECK 2: 21 TO 28, DECK 3: 31 TO 38 ETC.)

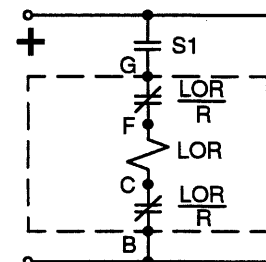
PANEL DRILLING DIMENSIONS



CONTROL CIRCUIT



LAYOUT



SCHEMATIC

	CONTACTS		POSITION	
			TRIP	RESET
CONTROL	B	C		X
DECK	F	G		X

MADE BY: I.R.U.
APPR. BY: J.M.

DATE: 8/29/78

DATE: 8/30/78

DWG. NO:

SHEET 1 OF 1

REV
EELEC 30923
DECN# 20436
WDS 8/26/92 JR
REV: 204-10-15

Mouser Electronics

Authorized Distributor

Click to View Pricing, Inventory, Delivery & Lifecycle Information:

[Electroswitch:](#)

[7802D](#)