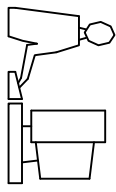
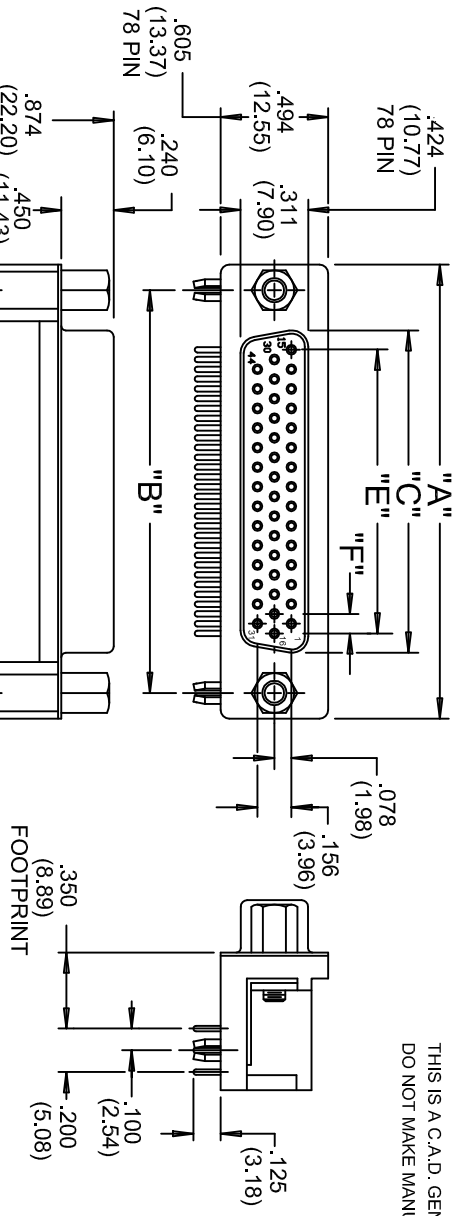


THIS IS A C.A.D. GENERATED DRAWING
DO NOT MAKE MANUAL REVISIONS TO MASTER.

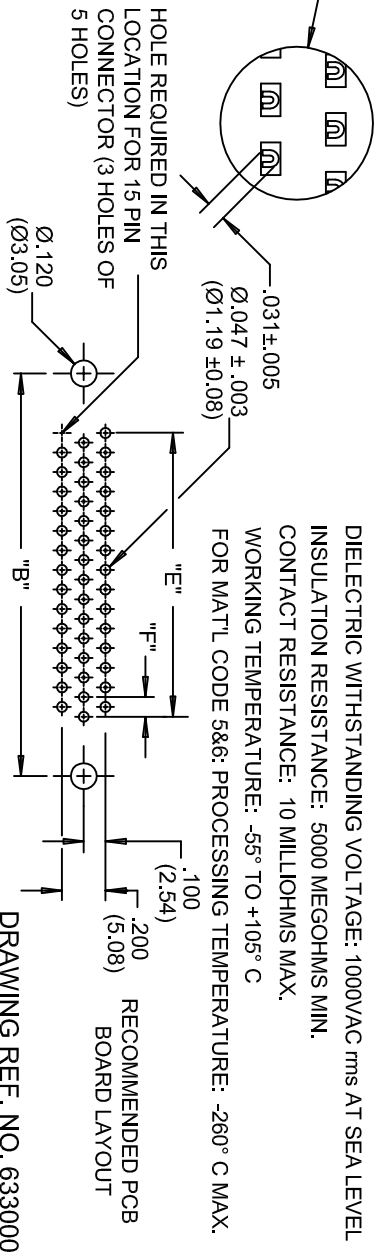


ISSUE NUMBER
ADD PCB LAYOUT
R.STAMONICA MAY 24/2011
(12)



MATERIALS:
INSULATOR: THERMOPLASTIC POLYESTER, UL94V-0
CHEMICAL RESISTANCE, COLOR BLACK
SHELL: STEEL, NICKEL PLATED
CONTACT: SEE ORDERING CODE
GOLD FLASH (CONTACT CODE 263)
10 MICRONS GOLD (CONTACT CODE 563)
30 MICRONS GOLD (CONTACT CODE 663)
TIN PLATING ON TAIL ENDS

ELECTRICAL:
CURRENT RATING: 3 AMPERES
DIELECTRIC WITHSTANDING VOLTAGE: 1000VAC rms AT SEA LEVEL
INSULATION RESISTANCE: 5000 MEGOHMS MIN.
CONTACT RESISTANCE: 10 MILLIOHMS MAX.
WORKING TEMPERATURE: -55° TO +105° C
FOR MATL CODE 5&6: PROCESSING TEMPERATURE: -260° C MAX.



ORDERING CODE

- SERIES **634-015-563-042**
- NUMBER OF CONTACTS _____
- CONTACT FINISH CODE _____
- CONNECTOR CODE _____
- 63- STANDARD CONTACTS, BLACK INSULATOR
73- 9TH PIN RECESSED .050(3.05) BLACK INSULATOR
74- 9TH PIN RECESSED .050(3.05) BLUE INSULATOR
- CONNECTOR MATERIAL CODE: _____
- 0- PHOSPHOR BRONZE
1- BRASS
5- PHOSPHOR BRONZE, HIGH TEMP INSULATOR
6- BRASS, HIGH TEMP INSULATOR
- GROUNDING FEATURE _____
- 1- 120(3.05) DIA. THROUGH HOLE TOP GROUND
2- 120(3.05) DIA. THROUGH HOLE BOTTOM GROUND
3- TWO PRONG BOARDLOCKS FOR .120(3.05)DIA.HOLE
4- FOUR PRONG BOARDLOCKS FOR .120(3.05)DIA.HOLE
- MOUNTING OPTIONAL _____
- 0- FIXED ROUND STANDOFF WITH THREADED INSERT
1- .125" DIA. THROUGH HOLE
2- 4-40 UNC THREADED INSERT
3- 4-40 UNC THREADED HEX STANDOFF

NUMBER OF CONTACTS	"A" Inch (mm)	"B" Inch (mm)	"C" Inch (mm)	"E" Inch (mm)	"F" Inch (mm)
15	1.214 (30.84)	.984 (24.99)	.642 (16.30)	.405 (10.29)	.090 (2.29)
26	1.545 (39.24)	1.312 (33.32)	.971 (24.66)	.765 (19.43)	.090 (2.29)
44	2.088 (53.04)	1.852 (47.04)	1.511 (38.38)	1.305 (33.15)	.090 (2.29)
62	2.730 (69.34)	2.500 (63.50)	2.159 (54.84)	1.948 (49.47)	.095 (2.41)
78	2.635 (66.93)	2.406 (61.11)	2.064 (52.42)	1.805 (45.85)	.095 (2.41)

634 SERIES HIGH DENSITY SUBMINIATURE D CONNECTOR RECEPTACLE(SOCKET) RIGHT ANGLE .350(8.89) FOOTPRINT

DRAWN: F.BRIONES DATE: NOV. 26/97
CHECKED: DATE:
PART NUMBER
SEE ORDERING CODE

EDAC INC
TORONTO, ONTARIO
CANADA
YOUR CONNECTION TO QUALITY & SERVICE



THIS SERIES FULLY CONFORMS TO THE EUROPEAN UNION DIRECTIVES 2002/95/EC AND 2002/96/EC FOR ROHS COMPLIANCY.

DRAWING NUMBER
634-000-001
ISSUE
12

Mouser Electronics

Authorized Distributor

Click to View Pricing, Inventory, Delivery & Lifecycle Information:

[EDAC:](#)

[634-015-263-032](#) [634-W15-262-012](#) [634-W26-262-012](#) [634-W44-262-012](#)